



Bucknell University

Fact Book

2012-13

Bucknell
UNIVERSITY

OFFICE OF INSTITUTIONAL RESEARCH
AND PLANNING



Fact Book 2012-13

Table of Contents

Introduction	1
Foreward	1
Mission of Bucknell University	2
Vision of Bucknell University	2
Brief History	3
Trustees	4
Senior Leadership Team	6
Academic Divisions	6
Academic Leadership	6
University Organizational Chart	7
Provost Area Organizational Chart	8
Admissions	9
Enrollment	15
Completions by Field of Study	29
Academics and Extracurricular	33
Student Success	37
Faculty and Staff	39
Finance	47
Definitions	51

Bucknell University Fact Book

BUCKNELL UNIVERSITY

FOREWORD

The Office of Institutional Research & Planning is pleased to present the Bucknell University Fact Book, 2012-2013. This book is intended as a single, readily accessible, consistent, and accurate source of information about the Bucknell University. The Fact Book provides answers to many of the most commonly asked questions about the campus and shows trend information over the last five years.

The 2012-2013 Fact Book represents a continuing effort to improve the quality and accessibility of information about Bucknell University. The Fact Book as well other data and reports is available at www.bucknell.edu/IR

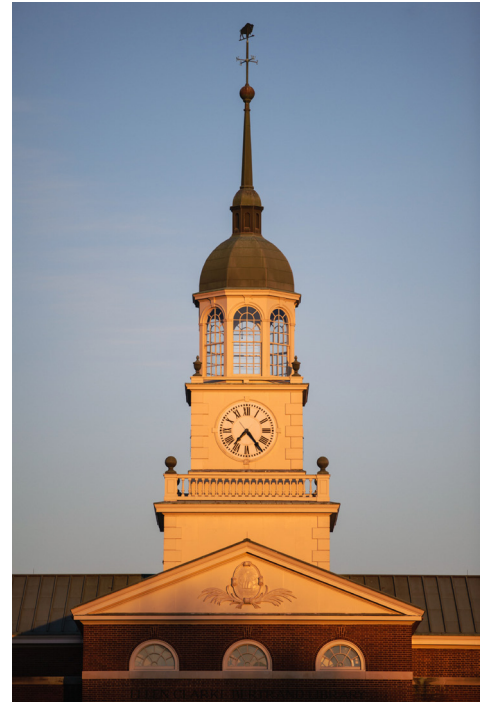
We would like to extend our appreciation to all offices that participated by providing us with their expertise and cooperation. We hope that you will find the Fact Book informative and useful. Please let us know if you have suggestion how we can improve it.

Kevork Horissian, Director of Institutional Research & Planning

Rita Liu, Assistant Director of Institutional research

Patty Johnston, Reports Coordinator

www.bucknell.edu/IR



THE MISSION OF BUCKNELL UNIVERSITY

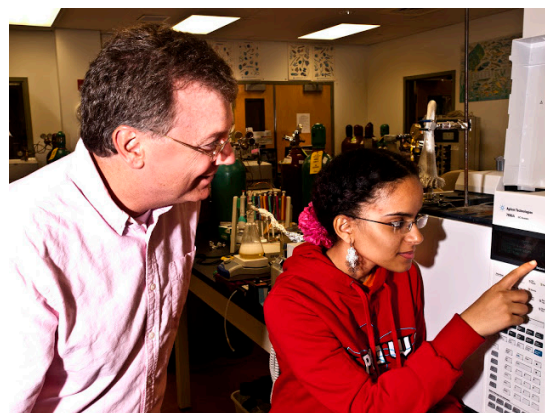
Bucknell is a unique national university where liberal arts and professional programs complement each other. Bucknell educates students for a lifetime of critical thinking and strong leadership characterized by continued intellectual exploration, creativity, and imagination. A Bucknell education enables students to interact daily with faculty who exemplify a passion for learning and a dedication to teaching and scholarship. Bucknell fosters a residential, co-curricular environment in which students develop intellectual maturity, personal conviction and strength of character, informed by a deep understanding of different cultures and diverse perspectives. Bucknell seeks to educate our students to serve the common good and to promote justice in ways sensitive to the moral and ethical dimensions of life.

Bucknell's rich history and heritage will influence its planning for the future. Bucknell's potential as an institution of higher learning extends beyond that of a traditional liberal arts college by virtue of its larger size and expansive programs. The University's broader spectrum of disciplines and courses of study within a diverse and active residential campus community enhance the quality of all aspects of the undergraduate experience, both in and out of the classroom.

THE VISION OF BUCKNELL UNIVERSITY

To provide students with the premier undergraduate experience in American higher education.

Bucknell will offer an academic program that is challenging and distinctive, with the capacity to prepare its graduates for successful personal, professional, and civic lives in the 21st century. Bucknell's residential life and co-curricular activities will fully support its academic program. This integrated environment for student learning and growth, enhanced by diversity in all its forms, will build connections to a global society. In doing so, Bucknell will emerge from a place of strength to a position of preeminence within American higher education.



A BRIEF HISTORY OF BUCKNELL UNIVERSITY

Bucknell University was founded 1846 by a group of Baptists who deemed it “desirable that a Literary Institution should be established in Central Pennsylvania, embracing a High School for male pupils, another for females, a College and also a Theological Institution.”

The charter for the University at Lewisburg was granted by the Legislature of Pennsylvania and approved by the governor on Feb. 5, 1846. Classes were held in the basement of the First Baptist Church in Lewisburg.

In 1850, the University moved into Taylor Hall, the first building completed on campus, which housed both women and men’s studies until the opening of the Female Institute in 1852. The school’s first commencement was held Aug. 20, 1851, for a graduation class of seven men.

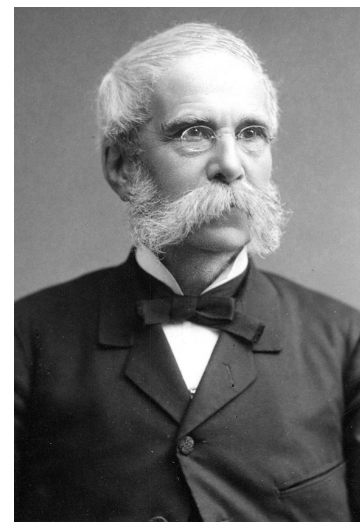
The Female Institute began instruction in 1852, with college courses being opened to women in 1883. The first woman graduate was Chella Scott, who received a bachelor’s degree with honors in 1885, and spoke at her commencement.

In 1875, Edward McKnight Brawley was Bucknell’s first African-American graduate, receiving a bachelor’s and master’s degree. He served as president of what became Selma University and Morris College, which he helped to found. Bucknell’s first international student was Maung Shaw Loo, who came from what is now called Myanmar as the first Burmese native to study in the United States; he graduated in 1864 and served many years as a physician in his home country.

The University at Lewisburg was renamed in 1886 in honor of William Bucknell, a charter member of the Board of Trustees and a major benefactor who challenged the board to match his donation. Mr. Bucknell also funded the University’s first scholarship, the first prizes for female students and the building of Commencement Hall, a chapel now named Bucknell Hall and home to the Stadler Center for Poetry.

Today, Bucknell is the nation’s largest private liberal arts university with 3,500 undergraduates on a 450-acre campus. As a highly selective private university, Bucknell offers a personalized and comprehensive liberal arts education to exceptionally talented students from across the U.S. and around the world. It offers academic programs in the arts, engineering, humanities, management, and social and natural sciences as well as the creative and performing arts; facilities for professional-grade instrumentation and spaces for digital and collaborative learning; and broad opportunities outside of class.

Bucknell University is now much more than a literary institution: It is a place that prepares students for success in an increasingly complex and interconnected global society.



TRUSTEES OF BUCKNELL UNIVERSITY, JULY 1, 2012

Name	Term Expires (June 30)	Affiliations
Kenneth W. Freeman '72 Chair, Board of Trustees Chair, Executive Committee	2016	Allen Questrom Professor and Dean, Boston University School of Management
J. Randall MacDonald Vice Chair and Secretary, Board of Trustees; Chair, Executive Resources Subcommittee	2017	Senior Vice President, Human Resources, IBM Corporation
Nancy B. Prial '80 Vice Chair, Board of Trustees	2014	Senior Principal, Essex Investment Management, LLC
John E. Bachman '78 Chair, Trusteeship Committee	2016	Partner, Price Waterhouse Coopers LLP
Susan M. Baird '72 Chair, Human Resources Subcommittee	2015	Former CFO for Time Warner's Book of the Month Club, Inc.
Ronald L. Benjamin '67	2014	Managing Director, Green Earth Cleaning, LLC
Charles W. Berger '75 Chair, Facilities and Infrastructure Subcommittee	2014	Chairman and CEO, ParAccel
John C. Bravman	2015	President, Bucknell University
Juanita Ora Luckett Brown	2015	President, Brown Business Consulting, LLC
Ellen Q. Bush '79 Chair, Finance Committee	2015	Senior Vice President Investments, Smith Barney
Susan J. Crawford '69	2013	Retired, Judge, U. S. Court of Appeals for the Armed Forces
William D. Dearstyne, Jr. '62	2017	Retired Company Group Chairman, Johnson & Johnson
Harriet Edelman '77	2016	Vice Chairman, Emigrant Savings Bank
Jane Taylor Elfers '83 Chair, DER Committee	2013	CEO, The Children's Place Retail Stores, Inc.
Bentley T. Elliott '66	2013	Managing Director of Communications, Merrill Lynch & Co., Inc.
Michael E. Flowers '76 Chair, Risk Management Subcommittee	2017	Vice President and Chief Legal Officer, KBK Enterprises
Robert J. Gamgort '84 Chair, Alumni and Parent Relations Subcommittee	2014	CEO, Pinnacle Foods

Name	Term Expires (June 30)	Affiliations
Peter C. Gerhard '80	2017	Managing Partner, G Capital Management, LLC
Eugene Gorab '85	2016	President and CEO, Greenfield Partners LLC
William A. Graham IV '62	2015	Chairman and CEO, The Graham Company
Linda G. Greenberg '63	2015	Former adjunct professor of communications, Montclair State University
Kirsten Heinemann '81	2017	
Stephen P. Holmes '79 Chair, Campaign Subcommittee	2017	Chairman and CEO, Wyndham Worldwide Corp.
Marlene A. Hurd '79 Chair, Student Life Subcommittee	2016	Managing Director, Relationship Manager, Fidelity Investments
Laura A. Kinney '81	2014	Former Executive Vice President and Co-CEO, Workrite Uniform Company
Lawrence S. Klock '69	2013	Managing Director, Russell Reynolds Associates
John H. Mathias '69	2013	Commissioner, Union County
David Maurrasse	2014	President & Founder, Marga, Inc.
Craig D. Mills '76 Chair, Audit, Compliance and Risk Management Committee	2016	Partner, Nixon Peabody LLP
William B. Morrow, Jr. Chair, Investments Committee	2015	Retired Managing Director and COO, Mid Europa Partners, LLP
Scott G. Nichols '70	2013	Senior Vice President for Development & Alumni Relations, Boston University
Christopher J. O'Brien '80	2017	Office of Christopher James O'Brien
Daniel R. Richards '78 Chair, Athletics Subcommittee	2015	Retired Secretary and Treasurer, Rock Island Corp.
David Scadden '75 Chair, Academic Affairs & Campus Life Committee	2013	Jordan Professor, Harvard University; Co-Director, Harvard Stem Cell Institute; Director, MGH Center for Regenerative Medicine
Frank Schoeneman '76	2016	Chairman and CEO, Empire Education Group
Glenn D. Steele, Jr.	2017	President and CEO, Geisinger Health System
C. Alan Walker '66	2017	President and CEO, Bradford Energy Co., Inc.

SENIOR LEADERSHIP TEAM

John C. Bravman, *President*

Michael A. Smyer, *Provost*

Param Bedi, *Vice President for Library and Information Technology*

Susan Lantz, *Dean of Students*

Wayne A. Bromfield, *General Counsel*

Pete Mackey, *Vice President for Communications and Community Relations*

Bill Conley, *Vice President for Enrollment Management*

Scott Rosevear, *Vice President for Development and Alumni Relations*

John P. Hardt, *Director of Athletics and Recreation*

David J. Surgala, *Vice President for Finance and Administration*

Carol Kennedy, *Director, President's Office and University Secretary*

ACADEMIC DIVISIONS

The College of Arts & Sciences

The College of Arts and Sciences comprises 3033 students and approximately 278 full-time faculty members. Courses are offered in the three traditional liberal arts divisions: humanities, social sciences, and natural sciences and mathematics. The faculty and courses are organized into 23 departments and 8 interdisciplinary programs (animal behavior, cell biology/ biochemistry, comparative humanities, environmental studies, international relations, Latin American studies, neuroscience, and women's and gender studies).

School of Management

The School of Management at Bucknell University is a part of College of Arts & Sciences and offers innovative professional education in the context of one of the nation's leading liberal arts universities. A Bucknell education, combining technical skills and deep intellectual exploration, is preparation for thoughtful and capable leaders.

The College of Engineering

The College of Engineering is dedicated to providing outstanding educational opportunities in engineering to a predominantly undergraduate student body of talented men and women. The faculty and courses are organized in six distinct departments: Biomedical Engineering, Chemical Engineering, Civic and Environmental Engineering, Computer Sciences, Electrical Engineering, and Mechanical Engineering.

Graduate School

Bucknell offers three different master's degrees across seven different programs in the College of Arts and Sciences, and master's of science degree in five programs in the College of Engineering. The role of graduate education is to provide "a deepening of the student's knowledge and experience base in the discipline by building on the increased commitment that graduate students bring to their work."

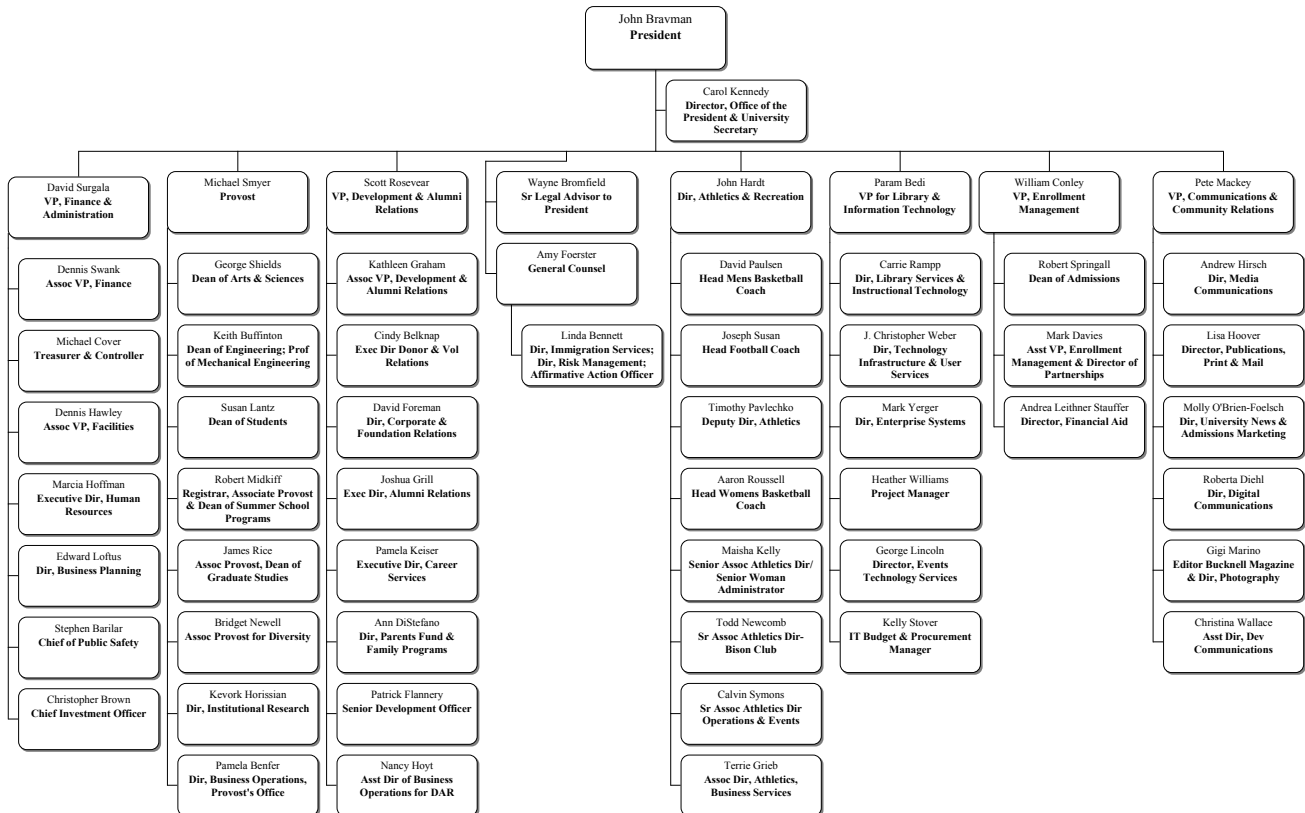
ACADEMIC LEADERSHIP

Mick Smyer, *Provost*

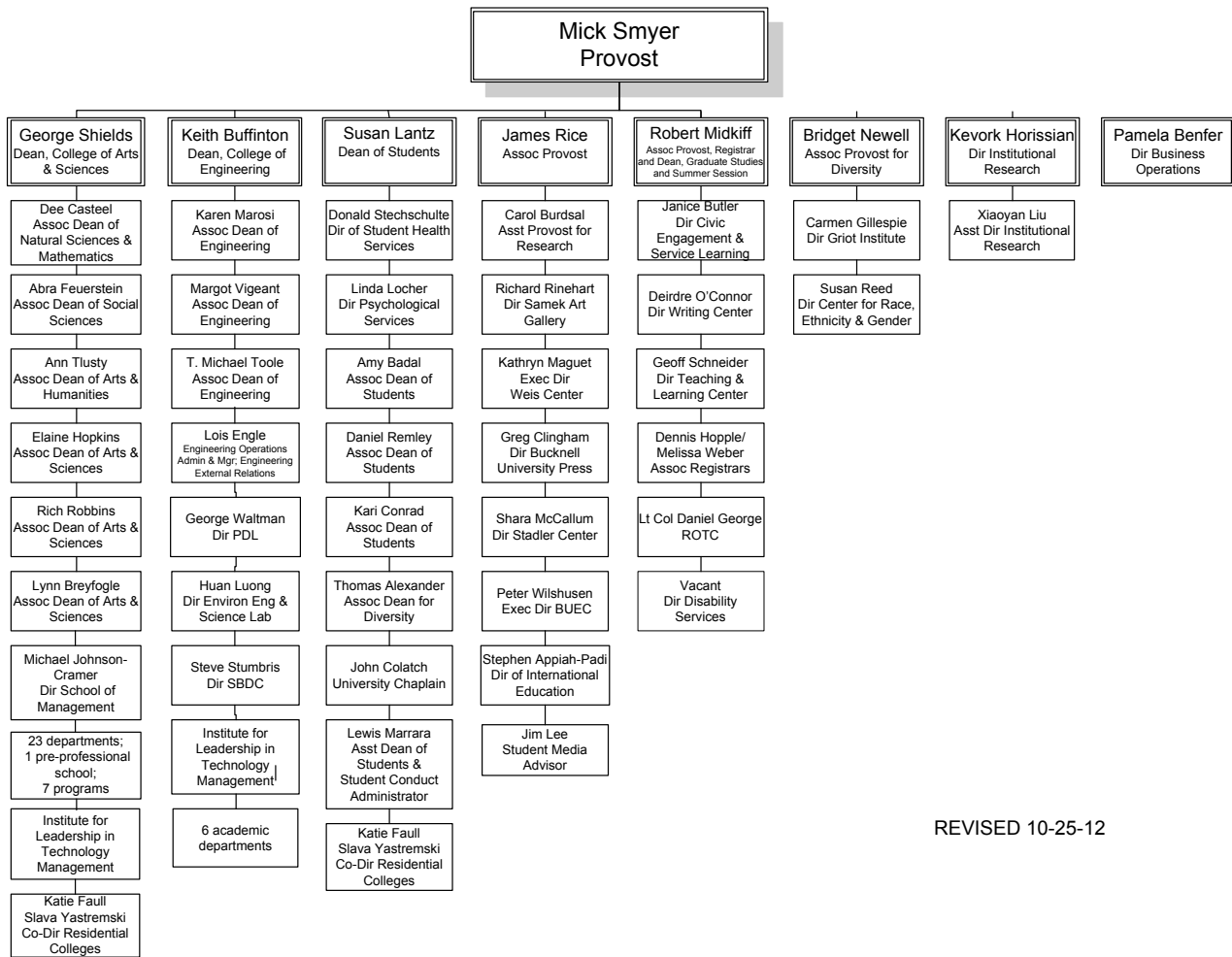
George Shields, *Dean of A&S*

Keith Buffington, *Dean of Engineering*

UNIVERSITY ORGANIZATIONAL CHART



PROVOST AREA ORGANIZATIONAL CHART



REVISED 10-25-12

Admissions

First-Year Admissions Statistics Undergraduate (2008-2012)							
Year	Applied	Admitted	Acceptance Rate	Enrolled	Yield	% Female Enrolled	% Minority Enrolled
2008	8,024	2,395	29.9%	957	40.0%	55.2%	11.5%
2009	7,572	2,263	29.9%	920	40.7%	50.7%	8.9%
2010	7,178	2,253	31.4%	929	41.2%	52.9%	13.2%
2011	7,940	2,188	27.6%	916	41.9%	52.0%	14.5%
2012	8,291	2,238	27.0%	918	41.0%	55.1%	15.1%

Figure 1.1 First-Year Admissions Trends_Undergraduate

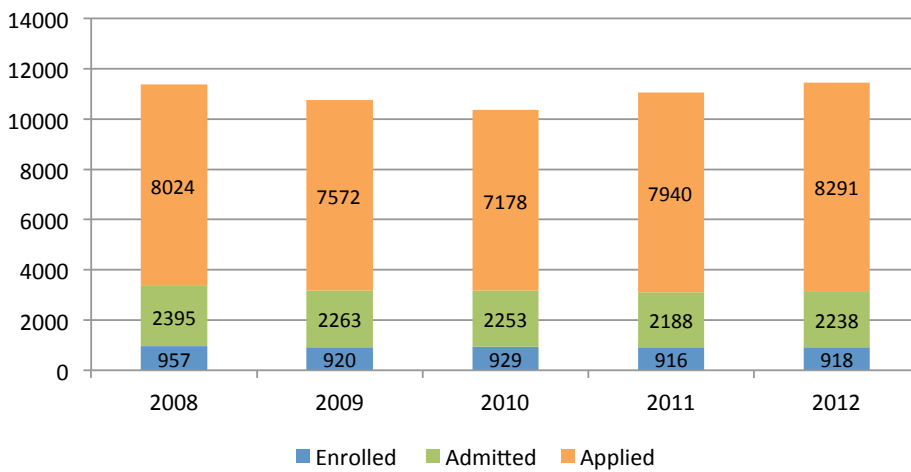
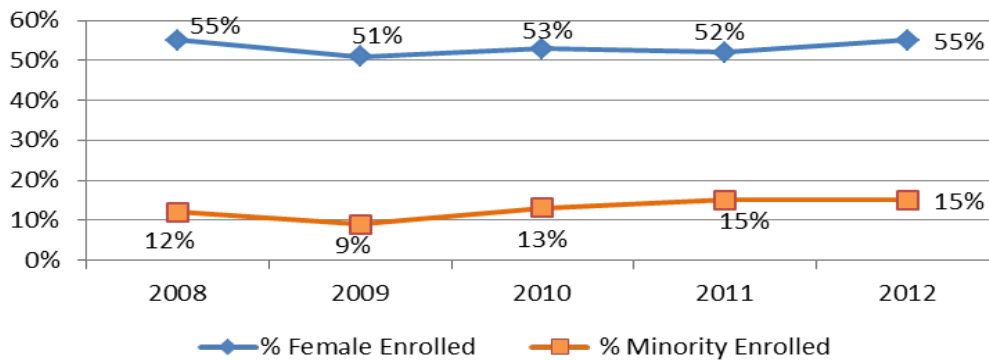


Figure 1.2 First-Year % of Enrolled Female and Minority Trends_Undergraduate



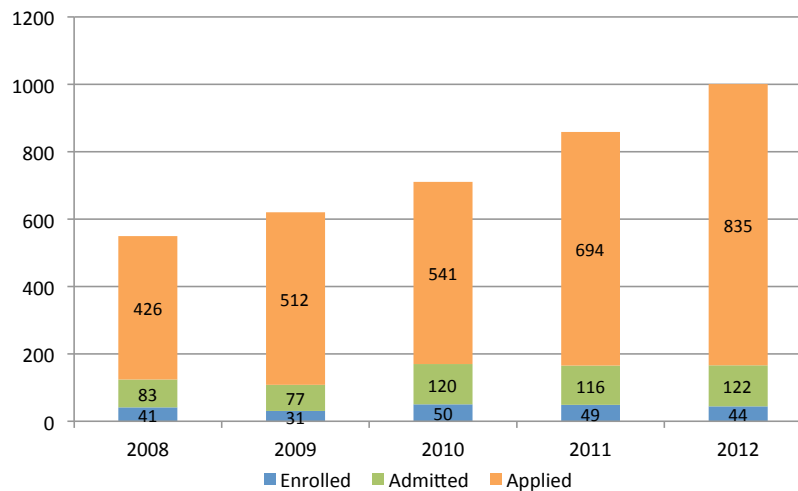
Entering First-Year Students Mean SAT and ACT Scores and Class Rankings (2008-2012)

	2008		2009		2010		2011		2012	
	Mean	25-75 percentile	Mean	25-75 percentile	Mean	25-75 percentile	Mean	25-75 percentile	Mean	25-75 percentile
SAT_Critical Reading	630	590-680	634	590-680	622	570-670	626	570-680	627	580-680
SAT_Math	667	620-710	665	630-720	660	610-710	665	620-710	661	620-710
SAT_CR+M	1297	1230-1380	1298	1240-1380	1281	1220-1360	1291	1220-1370	1288	1210-1370
SAT_Writing	644	600-700	641	600-690	631	580-690	639	590-690	637	590-690
ACT Composite	29	28-31	29	27-31	29	28-31	29	28-31	29	27-31
HS Rank (Percentile)	Rank(Percentile)		Rank(Percentile)		Rank(Percentile)		Rank(Percentile)		Rank(Percentile)	
% Ranked in top 10%	69%		59%		65%		60%		66%	

First-Year Admissions Statistics International Students (2008-2012)

Year	Applied	Admitted	Acceptance Rate	Enrolled	Yield
2008	426	83	19.5%	41	49.4%
2009	512	77	15.0%	31	40.3%
2010	541	120	22.2%	50	41.7%
2011	694	116	16.7%	49	42.2%
2012	835	122	14.6%	44	36.1%

Figure 1. 3 First-Year Admissions Trends_International Undergraduates



Enrolled First-Year Students By Region and State (2008-2012)						
Region	State	2008	2008	2010	2011	2012
Mid-Atlantic	Delaware	6	6	3	1	3
	D.C.	7	9	4	5	4
	Maryland	53	54	56	56	47
	New Jersey	144	154	143	158	173
	New York	148	137	149	134	137
	Pennsylvania	197	201	211	204	161
Midwest	Illinois	19	12	16	13	21
	Indiana	1	2	0	0	1
	Iowa	0	0	1	0	0
	Kansas	0	1	1	0	0
	Michigan	7	4	1	3	2
	Minnesota	2	3	2	2	3
	Missouri	1	1	1	1	1
	Nebraska	0	0	1	0	0
	North Dakota	0	0	0	0	0
	Ohio	19	18	19	11	18
	South Dakota	0	0	0	0	0
	West Virginia	2	1	0	0	0
Wisconsin	2	1	1	4	1	
New England	Connecticut	75	84	81	77	79
	Maine	3	3	4	4	2
	Massachusetts	70	63	55	57	71
	New Hampshire	5	5	6	5	5
	Rhode Island	2	2	2	5	2
	Vermont	1	3	1	4	1
South	Alabama	1	0	1	0	0
	Florida	14	8	8	10	10
	Georgia	5	5	4	8	4
	Kentucky	0	1	0	0	2
	Louisiana	1	1	0	0	1
	Mississippi	0	0	0	0	0
	North Carolina	4	4	7	11	5
	South Carolina	1	0	0	0	3
	Tennessee	0	3	1	1	2
Virginia	28	24	18	15	23	
Southwest	Arkansas	0	0	1	1	0
	New Mexico	1	1	0	1	1
	Oklahoma	1	1	0	0	0
	Texas	8	11	16	14	13
West	Alaska	0	0	0	0	0
	Arizona	2	1	2	1	1
	California	61	38	50	56	65
	Colorado	8	10	7	3	6
	Hawaii	1	0	0	0	1
	Idaho	2	0	0	0	0
	Montana	0	1	1	0	1
	Nevada	0	0	0	0	2
	Oregon	2	3	0	0	0
	Utah	2	0	0	0	1
	Washington	8	5	4	6	9
	Wyoming	0	0	0	1	0
US TOTAL		914	881	878	872	882
Non-Resident aliens		41	31	50	50	44
International Students*						
GRAND TOTAL		955	912	928	922	926
# Entering First-Time and First-Year on Census date		957	920	929	916	918

Note: Valid state information is not available for all students from 2008 to 2010.
International students are counted by home state and/or home country. International students who also had U.S. addresses are double counted.

First-Year Admissions Statistics--The College of Arts & Sciences ** (2008-2012)

Year	Applied	Admitted	Acceptance Rate	Enrolled	Yield	% Female Enrolled	% Minority Enrolled	Mean SAT	Mean ACT	Mean HS GPA
2008				755		60.3%	12.5%	1287	29	NA
2009	5,225	1,552	29.7%	661*	42.6%	59.6%	11.4%	1279	28	NA
2010	4,759	1,576	33.1%	660	41.9%	60.8%	13.2%	1265	29	3.45
2011	5,215	1,522	29.2%	655	43.0%	57.3%	15.6%	1277	29	3.49
2012	5,214	1,451	27.8%	656	45.2%	63.0%	14.3%	1269	29	3.45

* Based on 2009 first-year admission data file

** Students in the School of Management are not counted here

Entering First-Year Students Mean SAT and ACT Scores and Class Rankings - College of Arts & Sciences (2008-2012)

	2008		2009		2010		2011		2012	
	Mean	25-75 percentile	Mean	25-75 percentile	Mean	25-75 percentile	Mean	25-75 percentile	Mean	25-75 percentile
SAT_Critical Reading	629	590-680	631	580-680	620	570-670	626	570-680	625	570-680
SAT_Math	658	610-700	648	610-690	645	600-690	651	610-690	644	600-680
SAT_CR+M	1287	1220-1370	1279	1218-1370	1265	1208-1350	1277	1200-1360	1269	1180-1360
SAT_Writing	642	600-700	643	600-690	630	580-690	640	590-700	636	580-690
ACT Composite	29	27-31	28	26-30	29	27-31	29	27-31	29	27-31
HS Rank (Percentile)	Rank(Percentile)		Rank(Percentile)		Rank(Percentile)		Rank(Percentile)		Rank(Percentile)	
% Ranked in top 10%*	NA		NA		33.43%		34.69%		43.50%	

* HS rank (percentile) is the ratio of the number of top 10% students out of total students who provided HS ranking information

First-Year Admissions Statistics--The College of Engineering (2008-2012)

Year	Applied	Admitted	Acceptance Rate	Enrolled	Yield	% Female Enrolled	% Minority Enrolled	Mean SAT	Mean ACT	Mean HS GPA
2008				136		33.9%	11.8%	1345	31	NA
2009	1,812	532	29.4%	184*	34.6%	19.6%	16.9%	1347	31	NA
2010	1,920	493	25.7%	186	37.7%	28.5%	12.9%	1339	31	3.67
2011	2,137	481	22.5%	177	36.8%	32.2%	14.1%	1350	31	3.64
2012	2,228	521	23.4%	179	34.4%	33.0%	16.8%	1346	30	3.68

* Based on 2009 first-year admission data file

Entering First-Year Students Mean SAT and ACT Scores and Class Rankings -The College of Engineering (2008-2012)

	2008		2009		2010		2011		2012	
	Mean	25-75 percentile	Mean	25-75 percentile	Mean	25-75 percentile	Mean	25-75 percentile	Mean	25-75 percentile
SAT_Critical Reading	636	600-680	640	600-690	633	580-680	636	600-680	635	600-690
SAT_Math	709	670-750	708	680-750	706	660-750	714	680-750	711	670-760
SAT_CR+M	1345	1300-1420	1347	1300-1410	1339	1273-1428	1350	1298-1420	1346	1290-1420
SAT_Writing	652	620-690	631	580-680	634	590-690	639	590-680	645	600-690
ACT Composite	31	29-33	31	29-32	31	29-32	31	29-32	30	29-32
HS Rank (Percentile)	Rank(Percentile)		Rank(Percentile)		Rank(Percentile)		Rank(Percentile)		Rank(Percentile)	
% Ranked in top 10% *	NA		NA		58.6%		53.9%		71.8%	

* HS rank (percentile) is the ratio of the number of top 10% students out of total students who provided HS ranking information

First-Year Admissions Statistics--The School of Management (2008-2012)

Year	Applied	Admitted	Acceptance Rate	Enrolled	Yield	% Female Enrolled	% Minority Enrolled	Mean SAT	Mean ACT	Mean HS GPA
2008				66		47.0%	4.6%	1300	30	NA
2009	535	170	33.5%	75*	44.1%	48.0%	10.7%	1335	29	NA
2010	499	184	36.9%	83	45.1%	44.6%	20.5%	1270	29	3.52
2011	588	185	31.5%	84	45.4%	52.4%	14.3%	1275	30	3.44
2012	849	216	25.4%	83	38.4%	41.0%	16.9%	1300	30	3.52

* Based on 2009 first-year admission data file

Entering First-Year Students Mean SAT and ACT Scores and Class Rankings - The School of Management (2008-2012)

	2008		2009		2010		2011		2012	
	Mean	25-75 percentile	Mean	25-75 percentile	Mean	25-75 percentile	Mean	25-75 percentile	Mean	25-75 percentile
SAT_Critical Reading	628	580-690	644	600-690	611	560-670	607	560-670	622	580-683
SAT_Math	672	640-700	691	650-730	659	620-700	668	610-713	678	628-733
SAT_CR+M	1300	1230-1410	1335	1270-1383	1270	1230-1340	1275	1200-1370	1300	1250-1370
SAT_Writing	646	583-720	653	608-700	629	580-680	627	570-673	627	590-670
ACT Composite	30	28-31	29	28-30	29	28-31	30	29-31	30	28-32
HS Rank (Percentile)	Rank(Percentile)		Rank(Percentile)		Rank(Percentile)		Rank(Percentile)		Rank(Percentile)	
% Ranked in top 10% *	NA		NA		30.2%		25.0%		54.6%	

* HS rank (percentile) is the ratio of the number of top 10% students out of total students who provided HS ranking information

Graduate School Admissions Statistics (2008-2012)

Year	Applied	Admitted	Acceptance Rate	Enrolled	Yield	% Female Enrolled	% Minority Enrolled	Mean GRE	Mean UG GPA*
2008	131	72	55.0%	57	79.2%				
2009	100	54	54.0%	35	64.8%	57%	1.0%	1163	3.30
2010	113	40	35.4%	31	77.5%	39%	0.0%	1313	3.45
2011	119	46	38.7%	28	60.9%	64%	1.0%	1145	3.60
2012	86	40	46.5%	26	65.0%	46%	1.5%	n/a	3.46

*Bucknell undergraduates who apply to Bucknell for graduate school are not required to submit a GPA.

Transfer Admissions Statistics Undergraduate (2008-2012)

Year	Applied	Admitted	Acceptance Rate	Enrolled	Yield	% Female Enrolled	% Minority Enrolled
2008	152	57	37.5%	25	43.9%	60.0%	24.0%
2009	198	41	20.7%	24	58.5%	66.7%	12.5%
2010	163	64	39.3%	36	56.3%	52.8%	0.0%
2011	179	45	25.1%	28	62.2%	64.3%	14.3%
2012	193	44	22.8%	28	63.6%	53.6%	17.9%

Enrollment

Enrollment

BUCKNELL UNIVERSITY

10 Year Enrollment History							
Undergraduate							
Year	First-Year Undergrad	Transfer Undergrad	New Undergrad Engineering	FT Undergrad	PT Undergrad	Total Undergrad	Undergrad FTE
2003	906	30	179	3,449	37	3,486	3,461
2004	907	28	177	3,420	34	3,454	3,431
2005	920	30	170	3,469	36	3,505	3,481
2006	923	37	184	3,529	21	3,550	3,536
2007	887	21	177	3,492	28	3,520	3,501
2008	957	25	136	3,563	20	3,583	3,570
2009	920	20	184	3,523	20	3,543	3,330
2010	929	36	186	3,488	20	3,508	3,495
2011	916	28	177	3,530	24	3,554	3,538
2012	918	25	179	3,515	21	3,536	3,522
Graduate							
Year	First-Year Graduate	Transfer Graduate		Total FT Graduate	Total PT Graduate	Total Graduate	Graduate FTE
2003	40			105	87	192	134
2004	41			92	63	155	113
2005	32			82	61	143	102
2006	37			85	71	156	109
2007	25			77	80	157	104
2008	19			76	60	136	96
2009	21			80	50	130	97
2010	13			66	41	107	80
2011	16			54	27	81	63
2012	26			54	28	82	63
Total Year							
	First-Year Total	Transfer Total	New Engineering Total	FT Enrollment Total	PT Enrollment Total	University Headcount Total	FTE Total
2003	946	30	179	3,554	124	3,678	3,595
2004	948	28	177	3,512	97	3,609	3,544
2005	952	30	170	3,551	97	3,648	3,583
2006	960	37	184	3,614	92	3,706	3,645
2007	912	21	177	3,569	108	3,677	3,605
2008	976	25	136	3,639	80	3,719	3,666
2009	941	20	184	3,603	70	3,673	3,426
2010	942	36	186	3,554	61	3,615	3,574
2011	932	28	177	3,584	51	3,635	3,601
2012	944	25	179	3,569	49	3,618	3,585

Figure 2.1 Undergraduate and Graduate Enrollment 10-Year Trends

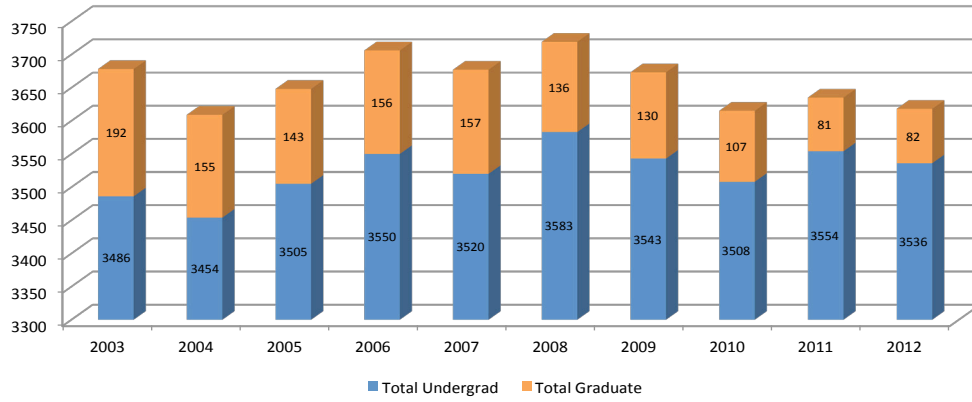
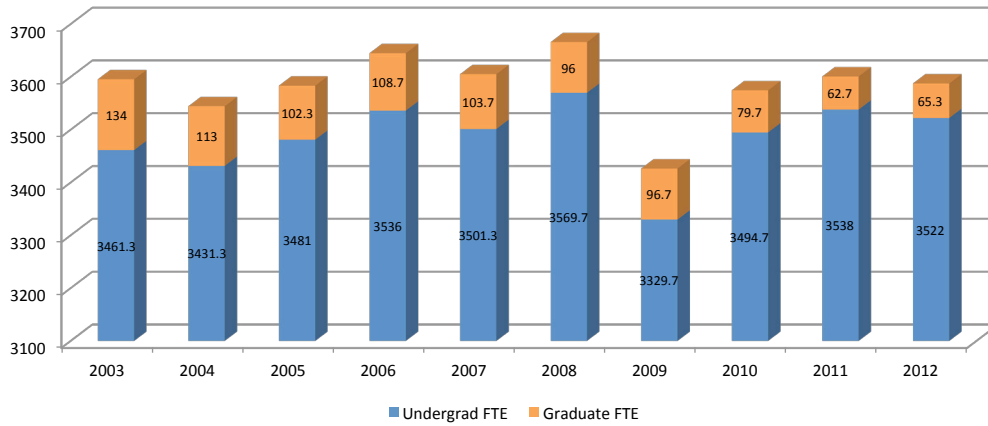


Figure 2.2 Undergraduate and Graduate FTE Enrollment 10-Year Trends



Fall Enrollment by Class					
2008-2012					
Class	2008	2009	2010	2011	2012
First year			930	919	928
Sophomore			895	888	889
Junior			828	837	815
Senior			832	886	868
Unassigned			2	5	2
Non-degree-seeking			21	19	34
Total Undergraduate			3,508	3,554	3,536
First Year Graduate	19	21	13	16	26
Second-Year Graduate	79	68	65	37	27
Graduate Non-degree Seeking	38	41	29	28	29
Total Graduate	136	130	107	81	82
University Headcount Total	3,719	3,673	3,615	3,635	3,618

Enrollment Diversity as of Fall 2012 (Degree-Seeking Students)						
	Undergrad Enrollment	% Total Undergrad	Graduate School Enrollment	% Total Graduate School	Total Enrollment	% Total Enrollment
Total Degree-Seeking	3502	99.0%	53	64.6%	3555	98.3%
GENDER						
Male	1,668	47.6%	24	45.3%	1,692	47.6%
Female	1,834	52.4%	29	54.7%	1,863	52.4%
ETHNICITY/RACE						
Nonresident Alien	166	4.7%	6	11.3%	172	4.8%
Hispanic	158	4.5%	1	1.9%	159	4.5%
Asian	113	3.2%	1	1.9%	114	3.2%
Black	110	3.1%	0	0.0%	110	3.1%
American Indian	1	0.0%	0	0.0%	1	0.0%
Native Hawaiian/ Pacific Islander	0	0.0%	0	0.0%	0	0.0%
White	2,815	80.4%	43	81.1%	2,858	80.4%
Multi-race	106	3.0%	0	0.0%	106	3.0%
Unknown	33	0.9%	2	3.8%	35	1.0%
Total Percent Non-Residents	166	4.7%	6	11.3%	172	4.8%
Total Percent U.S. Minority	488	13.9%	2	3.8%	490	13.8%
NATIONALITY						
U.S. Citizen	3,218	91.9%	47	88.7%	3,265	91.8%
Dual U.S. and Other Citizen	73	2.1%	0	0.0%	73	2.1%
Resident Alien	45	1.3%	0	0.0%	45	1.3%
Nonresident Alien	166	4.7%	6	11.3%	172	4.8%
Percent Total International	166	4.7%	6	11.3%	172	4.8%
HOME OF ORIGIN						
Pennsylvania	766	21.9%	37	69.8%	803	22.6%
Other U.S. State	2,525	72.1%	10	18.9%	2,535	71.3%
Other Country	211	6.0%	6	11.3%	217	6.1%
Pell Grant Recipients	349	10.0%	0	0.0%	349	9.8%
First Generation Students	452	12.9%	5	9.4%	457	12.9%

Enrollment Diversity by Gender as of Fall 2012 (Degree-Seeking Students)						
	Undergrad Enrollment	% Total Undergrad	Graduate School Enrollment	% Total Graduate School	Total Enrollment	% Total Enrollment
Total Degree-Seeking	3,502	99.04%	53	64.63%	3,555	98.26%
MALE	1,668	99.05%	24	68.57%	1,692	98.43%
ETHNICITY/RACE						
Nonresident Alien	93	5.6%	3	12.5%	96	5.7%
Hispanic	79	4.7%	1	4.2%	80	4.7%
Asian	58	3.5%	1	4.2%	59	3.5%
Black	65	3.9%	0	0.0%	65	3.8%
American Indian	1	0.1%	0	0.0%	1	0.1%
Native Hawaiian/ Pacific Islander	0	0.0%	0	0.0%	0	0.0%
White	1,298	77.8%	18	75.0%	1,316	77.8%
Multi-race	54	3.2%	0	0.0%	54	3.2%
Unknown	20	1.2%	1	4.2%	21	1.2%
Total Percent Non-Residents	93	5.6%	3	12.5%	96	5.7%
Total Percent U.S. Minority	257	15.4%	2	8.3%	259	15.3%
NATIONALITY						
U.S. Citizen	1,525	91.4%	21	87.5%	1,546	91.4%
Dual U.S. and Other Citizen	30	1.8%	0	0.0%	30	1.8%
Resident Alien	20	1.2%	0	0.0%	20	1.2%
Nonresident Alien	93	5.6%	3	12.5%	96	5.7%
Percent Total International	93	5.6%	3	12.5%	96	5.7%
HOME OF ORIGIN						
Pennsylvania	412	24.7%	16	66.7%	428	25.3%
Other U.S. State	1,143	68.5%	5	20.8%	1,148	67.8%
Other Country	113	6.8%	3	12.5%	116	6.9%
Pell Grant Recipients	168	10.1%	0	0.0%	168	9.9%
First Generation Students	257	15.4%	1	4.2%	258	15.2%
FEMALE	1,834	99.0%	29	61.7%	1,863	98.1%
ETHNICITY/RACE						
Nonresident Alien	73	4.0%	3	10.3%	76	4.1%
Hispanic	79	4.3%	0	0.0%	79	4.2%
Asian	55	3.0%	0	0.0%	55	3.0%
Black	45	2.5%	0	0.0%	45	2.4%
American Indian	0	0.0%	0	0.0%	0	0.0%
Native Hawaiian/ Pacific Islander	0	0.0%	0	0.0%	0	0.0%
White	1,517	82.7%	25	86.2%	1,542	82.8%
Multi-race	52	2.8%	0	0.0%	52	2.8%
Unknown	13	0.7%	1	3.4%	14	0.8%
Total Percent Non-Residents	73	4.0%	3	10.3%	76	4.1%
Total Percent U.S. Minority	231	12.6%	0	0.0%	231	12.4%
NATIONALITY						
U.S. Citizen	1,693	92.3%	26	89.7%	1,719	92.3%
Dual U.S. and Other Citizen	43	2.3%	0	0.0%	43	2.3%
Resident Alien	25	1.4%	0	0.0%	25	1.3%
Nonresident Alien	73	4.0%	3	10.3%	76	4.1%
Percent Total International	73	4.0%	3	10.3%	76	4.1%
HOME OF ORIGIN						
Pennsylvania	354	19.3%	21	72.4%	375	20.1%
Other U.S. State	1,382	75.4%	5	17.2%	1,387	74.4%
Other Country	98	5.3%	3	10.3%	101	5.4%
Pell Grant Recipients	181	9.9%	0	0.0%	181	9.7%
First Generation Students	195	10.6%	4	13.8%	199	10.7%

Undergraduate Enrollment Diversity as of Fall 2012 (Degree-Seeking Students)							
	College of Arts & Sciences	% Total Undergrad	College of Engineering	% Total Undergrad	School of Management	% Total Undergrad	Total Undergrad Enrollment
Total Degree-Seeking	2,591	74.0%	671	19.2%	240	6.9%	3,502
GENDER							
Male	1,074	41.5%	481	71.7%	113	47.1%	1,668
Female	1,517	58.5%	190	28.3%	127	52.9%	1,834
ETHNICITY/RACE							
Nonresident Alien	94	3.6%	61	9.1%	11	4.6%	166
Hispanic	120	4.6%	33	4.9%	5	2.1%	158
Asian	79	3.0%	27	4.0%	7	2.9%	113
Black	90	3.5%	11	1.6%	9	3.8%	110
American Indian	1	0.0%	0	0.0%	0	0.0%	1
Native Hawaiian/ Pacific Islander	0	0.0%	0	0.0%	0	0.0%	0
White	2,107	81.3%	504	75.1%	204	85.0%	2,815
Multi-race	80	3.1%	25	3.7%	1	0.4%	106
Unknown	20	0.8%	10	1.5%	3	1.3%	33
Total Percent Non-Residents	94	3.6%	61	9.1%	11	4.6%	166
Total Percent U.S. Minority	370	14.3%	96	14.3%	22	9.2%	488
NATIONALITY							
U.S. Citizen	2,404	92.8%	594	88.5%	220	91.7%	3,218
Dual U.S. and Other Citizen	60	2.3%	8	1.2%	5	2.1%	73
Resident Alien	33	1.3%	8	1.2%	4	1.7%	45
Nonresident Alien	94	3.6%	61	9.1%	11	4.6%	166
Percent Total International	94	3.6%	61	9.1%	11	4.6%	166
HOME OF ORIGIN							
Pennsylvania	529	20.4%	189	28.2%	48	20.0%	766
Other U.S. State	1,935	74.7%	413	61.5%	177	73.8%	2,525
Other Country	127	4.9%	69	10.3%	15	6.3%	211
Pell Grant Recipients	275	10.6%	62	9.2%	12	5.0%	349
First Generation Students	330	12.7%	102	15.2%	20	8.3%	452

Undergraduate Enrollment Diversity by Gender as of Fall 2012 (Degree-Seeking Students)							
	College of Arts & Sciences	% Total Undergrad	College of Engineering	% Total Undergrad	School of Management	% Total Undergrad	Total Undergrad Enrollment
Total Degree-Seeking	2,591	74.0%	671	19.2%	240	6.9%	3,502
MALE	1,074	41.5%	481	71.7%	113	47.1%	1,668
ETHNICITY/RACE							
Nonresident Alien	44	4.1%	42	8.7%	7	6.2%	93
Hispanic	52	4.8%	25	5.2%	2	1.8%	79
Asian	35	3.3%	21	4.4%	2	1.8%	58
Black	55	5.1%	4	0.8%	6	5.3%	65
American Indian	1	0.1%	0	0.0%	0	0.0%	1
Native Hawaiian/ Pacific Islander	0	0.0%	0	0.0%	0	0.0%	0
White	840	78.2%	366	76.1%	92	81.4%	1,298
Multi-race	37	3.4%	16	3.3%	1	0.9%	54
Unknown	10	0.9%	7	1.5%	3	2.7%	20
Total Percent Non-Residents	44	4.1%	42	8.7%	7	6.2%	93
Total Percent U.S. Minority	180	16.8%	66	13.7%	11	9.7%	257
NATIONALITY							
U.S. Citizen	994	92.6%	427	88.8%	104	92.0%	1,525
Dual U.S. and Other Citizen	22	2.0%	7	1.5%	1	0.9%	30
Resident Alien	14	1.3%	5	1.0%	1	0.9%	20
Nonresident Alien	44	4.1%	42	8.7%	7	6.2%	93
Percent Total International	44	4.1%	42	8.7%	7	6.2%	93
HOME OF ORIGIN							
Pennsylvania	241	22.4%	150	31.2%	21	18.6%	412
Other U.S. State	775	72.2%	284	59.0%	84	74.3%	1,143
Other Country	58	5.4%	47	9.8%	8	7.1%	113
Pell Grant Recipients	120	11.2%	43	8.9%	5	4.4%	168
First Generation Students	169	15.7%	78	16.2%	10	8.8%	257
FEMALE	1,517	58.6%	190	28.3%	127	52.9%	1,834
ETHNICITY/RACE							
Nonresident Alien	50	3.3%	19	10.0%	4	3.1%	73
Hispanic	68	4.5%	8	4.2%	3	2.4%	79
Asian	44	2.9%	6	3.2%	5	3.9%	55
Black	35	2.3%	7	3.7%	3	2.4%	45
American Indian	0	0.0%	0	0.0%	0	0.0%	0
Native Hawaiian/ Pacific Islander	0	0.0%	0	0.0%	0	0.0%	0
White	1,267	83.5%	138	72.6%	112	88.2%	1,517
Multi-race	43	2.8%	9	4.7%	0	0.0%	52
Unknown	10	0.7%	3	1.6%	0	0.0%	13
Total Percent Non-Residents	50	3.3%	19	10.0%	4	3.1%	73
Total Percent U.S. Minority	190	12.5%	30	15.8%	11	8.7%	231
NATIONALITY							
U.S. Citizen	1,410	92.9%	167	87.9%	116	91.3%	1,693
Dual U.S. and Other Citizen	38	2.5%	1	0.5%	4	3.1%	43
Resident Alien	19	1.3%	3	1.6%	3	2.4%	25
Nonresident Alien	50	3.3%	19	10.0%	4	3.1%	73
Percent Total International	50	3.3%	0	0.0%	0	0.0%	50
HOME OF ORIGIN							
Pennsylvania	288	19.0%	39	20.5%	27	21.3%	354
Other U.S. State	1,160	76.5%	129	67.9%	93	73.2%	1,382
Other Country	69	4.5%	22	11.6%	7	5.5%	98
Pell Grant Recipients	155	10.2%	19	10.0%	7	5.5%	181
First Generation Students	161	10.6%	24	12.6%	10	7.9%	195

**Enrollment Diversity for Pell Recipients as of Fall 2012
(Degree-Seeking Students)**

	College of Arts & Sciences	% Total Undergrad	College of Engineering	% Total Undergrad	School of Management	% Total Undergrad	Total Undergrad Enrollment
Total Degree-Seeking	2,591	74.0%	671	19.2%	240	6.9%	3502
GENDER							
Male	120	4.6%	43	6.4%	5	2.1%	168
Female	155	6.0%	19	2.8%	7	2.9%	181
ETHNICITY/RACE							
Nonresident Alien	0	0.0%	0	0.0%	0	0.0%	0
Hispanic	45	1.7%	8	1.2%	1	0.4%	54
Asian	20	0.8%	13	1.9%	2	0.8%	35
Black	39	1.5%	4	0.6%	2	0.8%	45
American Indian	0	0.0%	0	0.0%	0	0.0%	0
Native Hawaiian/ Pacific Islander	0	0.0%	0	0.0%	0	0.0%	0
White	159	6.1%	29	4.3%	7	2.9%	195
Multi-race	10	0.4%	7	1.0%	0	0.0%	17
Unknown	2	0.1%	1	0.1%	0	0.0%	3
Total Percent Non-Residents	0	0.0%	0	0.0%	0	0.0%	0
Total Percent U.S. Minority	114	4.4%	32	4.8%	5	2.1%	151
NATIONALITY							
U.S. Citizen	250	9.6%	59	8.8%	9	3.8%	318
Dual U.S. and Other Citizen	8	0.3%	1	0.1%	0	0.0%	9
Resident Alien	17	0.7%	2	0.3%	3	1.3%	22
Nonresident Alien	0	0.0%	0	0.0%	0	0.0%	0
Percent Total International	0	0.0%	0	0.0%	0	0.0%	0
HOME OF ORIGIN							
Pennsylvania	96	3.7%	18	2.7%	4	1.7%	118
Other U.S. State	162	6.3%	42	6.3%	5	2.1%	209
Other Country	17	0.7%	2	0.3%	3	1.3%	22

Enrollment Diversity for Pell Recipients by Gender as of Fall 2012 (Degree-Seeking Students)							
	College of Arts & Sciences	% Total Undergrad	College of Engineering	% Total Undergrad	School of Management	% Total Undergrad	Total Undergrad Enrollment
Total Degree-Seeking	2,591	74.0%	671	19.2%	240	6.9%	3,502
MALE	120	4.6%	43	6.4%	5	2.1%	168
ETHNICITY/RACE							
Nonresident Alien	0	0.0%	0	0.0%	0	0.0%	0
Hispanic	22	18.3%	5	11.6%	0	0.0%	27
Asian	12	10.0%	10	23.3%	0	0.0%	22
Black	23	19.2%	1	2.3%	2	40.0%	26
American Indian	0	0.0%	0	0.0%	0	0.0%	0
Native Hawaiian/ Pacific Islander	0	0.0%	0	0.0%	0	0.0%	0
White	59	49.2%	23	53.5%	3	60.0%	85
Multi-race	3	2.5%	4	9.3%	0	0.0%	7
Unknown	1	0.8%	0	0.0%	0	0.0%	1
Total Percent Non-Residents	0	0.0%	0	0.0%	0	0.0%	0
Total Percent US Minority	60	50.0%	20	46.5%	2	40.0%	82
NATIONALITY							
US Citizen	110	91.7%	42	97.7%	4	80.0%	156
Dual US and Other Citizen	3	2.5%	1	2.3%	0	0.0%	4
Resident Alien	7	5.8%	0	0.0%	1	20.0%	8
Nonresident Alien	0	0.0%	0	0.0%	0	0.0%	0
Percent Total International	0	0.0%	0	0.0%	0	0.0%	0
HOME OF ORIGIN							
Pennsylvania	39	32.5%	14	32.6%	0	0.0%	53
Other US State	74	61.7%	29	67.4%	4	80.0%	107
Other Country	7	5.8%	0	0.0%	1	20.0%	8
FEMALE	155	6.0%	19	2.8%	7	2.9%	181
ETHNICITY/RACE							
Nonresident Alien	0	0.0%	0	0.0%	0	0.0%	0
Hispanic	23	14.8%	3	15.8%	1	14.3%	27
Asian	8	5.2%	3	15.8%	2	28.6%	13
Black	16	10.3%	3	15.8%	0	0.0%	19
American Indian	0	0.0%	0	0.0%	0	0.0%	0
Native Hawaiian/ Pacific Islander	0	0.0%	0	0.0%	0	0.0%	0
White	100	64.5%	6	31.6%	4	57.1%	110
Multi-race	7	4.5%	3	15.8%	0	0.0%	10
Unknown	1	0.6%	1	5.3%	0	0.0%	2
Total Percent Non-Residents	0	0.0%	0	0.0%	0	0.0%	0
Total Percent US Minority	54	34.8%	12	63.2%	3	42.9%	69
NATIONALITY							
US Citizen	140	90.3%	17	89.5%	5	71.4%	162
Dual US and Other Citizen	5	3.2%	0	0.0%	0	0.0%	5
Resident Alien	10	6.5%	2	10.5%	2	28.6%	14
Nonresident Alien	0	0.0%	0	0.0%	0	0.0%	0
Percent Total International	0	0.0%	0	0.0%	0	0.0%	0
HOME OF ORIGIN							
Pennsylvania	57	36.8%	4	21.1%	4	57.1%	65
Other US State	88	56.8%	13	68.4%	1	14.3%	102
Other Country	10	6.5%	2	10.5%	2	28.6%	14

Enrollment Diversity for First Generation College Students as of Fall 2012 (Degree-Seeking Students)							
	College of Arts & Sciences	% Total Undergrad	College of Engineering	% Total Undergrad	School of Management	% Total Undergrad	Total Undergrad Enrollment
Total Degree-Seeking	2,591	74.0%	671	19.2%	240	6.9%	3,502
GENDER							
Male	169	6.5%	78	11.6%	10	4.2%	257
Female	161	6.2%	24	3.6%	10	4.2%	195
ETHNICITY/RACE							
Nonresident Alien	25	1.0%	13	1.9%	1	0.4%	39
Hispanic	45	1.7%	18	2.7%	1	0.4%	64
Asian	19	0.7%	12	1.8%	3	1.3%	34
Black	51	2.0%	2	0.3%	3	1.3%	56
American Indian	0	0.0%	0	0.0%	0	0.0%	0
Native Hawaiian/ Pacific Islander	0	0.0%	0	0.0%	0	0.0%	0
White	174	6.7%	50	7.5%	12	5.0%	236
Multi-race	16	0.6%	6	0.9%	0	0.0%	22
Unknown	0	0.0%	1	0.1%	0	0.0%	1
Total Percent Non-Residents	25	1.0%	13	1.9%	1	0.4%	39
Total Percent US Minority	131	5.1%	38	5.7%	7	2.9%	176
NATIONALITY							
US Citizen	286	11.0%	86	12.8%	16	6.7%	388
Dual US and Other Citizen	4	0.2%	0	0.0%	0	0.0%	4
Resident Alien	15	0.6%	3	0.4%	3	1.3%	21
Nonresident Alien	25	1.0%	13	1.9%	1	0.4%	39
Percent Total International	25	1.0%	13	1.9%	1	0.4%	39
HOME OF ORIGIN							
Pennsylvania	105	4.1%	36	5.4%	8	3.3%	149
Other US State	185	7.1%	50	7.5%	8	3.3%	243
Other Country	40	1.5%	16	2.4%	4	1.7%	60

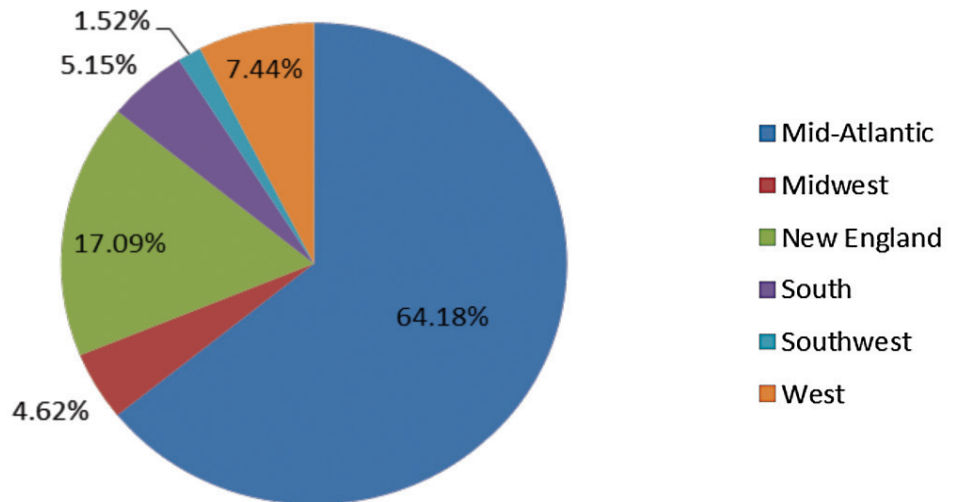
**Enrollment Diversity for First Generation College Students as of Fall 2012
(Degree-Seeking Students)**

	College of Arts & Sciences	% Total Undergrad	College of Engineering	% Total Undergrad	School of Management	% Total Undergrad	Total Undergrad Enrollment
Total Degree-Seeking	2,591	74.0%	671	19.2%	240	6.9%	3,502
MALE	169	6.5%	78	11.6%	10	4.2%	257
ETHNICITY/RACE							
Nonresident Alien	13	7.7%	9	11.5%	1	10.0%	23
Hispanic	24	14.2%	14	17.9%	0	0.0%	38
Asian	13	7.7%	8	10.3%	0	0.0%	21
Black	31	18.3%	2	2.6%	3	30.0%	36
American Indian	0	0.0%	0	0.0%	0	0.0%	0
Native Hawaiian/ Pacific Islander	0	0.0%	0	0.0%	0	0.0%	0
White	82	48.5%	42	53.8%	6	60.0%	130
Multi-race	6	3.6%	3	3.8%	0	0.0%	9
Unknown	0	0.0%	0	0.0%	0	0.0%	0
Total Percent Non-Residents	13	7.7%	9	11.5%	1	10.0%	23
Total Percent US Minority	74	43.8%	27	34.6%	3	30.0%	104
NATIONALITY							
US Citizen	146	86.4%	67	85.9%	8	80.0%	221
Dual US and Other Citizen	3	1.8%	0	0.0%	0	0.0%	3
Resident Alien	7	4.1%	2	2.6%	1	10.0%	10
Nonresident Alien	13	7.7%	9	11.5%	1	10.0%	23
Percent Total International	13	7.7%	9	11.5%	1	10.0%	23
HOME OF ORIGIN							
Pennsylvania	52	30.8%	31	39.7%	4	40.0%	87
Other US State	97	57.4%	36	46.2%	4	40.0%	137
Other Country	20	11.8%	11	14.1%	2	20.0%	33
FEMALE	161	6.2%	24	3.6%	10	4.2%	195
ETHNICITY/RACE							
Nonresident Alien	12	7.5%	4	16.7%	0	0.0%	16
Hispanic	21	13.0%	4	16.7%	1	10.0%	26
Asian	6	3.7%	4	16.7%	3	30.0%	13
Black	20	12.4%	0	0.0%	0	0.0%	20
American Indian	0	0.0%	0	0.0%	0	0.0%	0
Native Hawaiian/ Pacific Islander	0	0.0%	0	0.0%	0	0.0%	0
White	92	57.1%	8	33.3%	6	60.0%	106
Multi-race	10	6.2%	3	12.5%	0	0.0%	13
Unknown	0	0.0%	1	4.2%	0	0.0%	1
Total Percent Non-Residents	12	7.5%	4	16.7%	0	0.0%	16
Total Percent US Minority	57	35.4%	11	45.8%	4	40.0%	72
NATIONALITY							
US Citizen	140	87.0%	19	79.2%	8	80.0%	167
Dual US and Other Citizen	1	0.6%	0	0.0%	0	0.0%	1
Resident Alien	8	5.0%	1	4.2%	2	20.0%	11
Nonresident Alien	12	7.5%	4	16.7%	0	0.0%	16
Percent Total International	12	7.5%	4	16.7%	0	0.0%	16
HOME OF ORIGIN							
Pennsylvania	53	32.9%	5	20.8%	4	40.0%	62
Other US State	88	54.7%	14	58.3%	4	40.0%	106
Other Country	20	12.4%	5	20.8%	2	20.0%	27

Total Undergraduate Enrollment By Region and State									
Fall 2012									
Region	State	UGR ENROLLED BY STATE	TOTAL BY REGION	% BY REGION	Region	State	UGR ENROLLED BY STATE	TOTAL BY REGION	% BY REGION
Mid-Atlantic	DC	18	2155	64.2%	Southwest	Arkansas	1	51	15.20%
	Delaware	11				New Mexico	3		
	Maryland	211				Oklahoma	2		
	New Jersey	604				Texas	45		
	New York	519							
	Pennsylvania	792							
Midwest	Iowa	1	155	4.6%	West	Alaska	0	250	7.4%
	Illinois	61				Arizona	6		
	Indiana	2				California	186		
	Kansas	1				Colorado	25		
	Michigan	9				Hawaii	1		
	Minnesota	8				Idaho	0		
	Missouri	3				Montana	2		
	North Dakota	0				Nevada	3		
	Nebraska	0				Oregon	3		
	Ohio	62				Utah	2		
	South Dakota	0				Washington	21		
	Wisconsin	7				Wyoming	1		
	West Virginia	1							
	New England	Connecticut				299	574		
Massachusetts		225	Florida	33					
Maine		14	Georgia	19					
New Hampshire		18	Kentucky	2					
Rhode Island		11	Louisiana	2					
Vermont		7	Mississippi	0					
			North Carolina	25					
			South Carolina	6					
			Tennessee	7					
			Virginia	77					
UGR ENROLLED BY STATE			TOTAL BY REGION			% BY REGION			
Total in U.S.		3,358			3,108		100.0%		
Intl		184			184		5.2%		
Resident Alien		45			45		1.3%		

Note: % by U.S. region is the ratio of head counts who had U.S. address out of number of total in U.S. (N=3,358). % by region for international and resident alien students is the ratio of head counts out of total undergraduates (N=3,536). International students who also had U.S. addresses are double counted.

Figure 2.3 % of Undergraduate Enrollment by U.S. Region



Total Graduate School Enrollment By Region and State				
Fall 2012				
Region	State	# ENROLLED IN GRADUATE SCHOOL	TOTAL BY REGION	% BY REGION
Mid-Atlantic	DC			
	Delaware			
	Maryland	1		
	New Jersey	2		
	New York	3		
	Pennsylvania	49	55	67.1%
Midwest	Iowa			
	Illinois			
	Indiana	1		
	Kansas			
	Michigan			
	Minnesota			
	Missouri			
	North Dakota			
	Nebraska			
	Ohio			
	South Dakota			
	Wisconsin	1		
	West Virginia		2	2.4%
New England	Connecticut			
	Massachusetts			
	Maine			
	New Hampshire			
	Rhode Island			
	Vermont			
South	Alabama			
	Florida			
	Georgia			
	Kentucky			
	Louisiana			
	Mississippi			
	North Carolina			
	South Carolina	1		
	Tennessee			
Virginia		1	1.2%	
Southwest	Arkansas			
	New Mexico			
	Oklahoma			
	Texas			
West	Alaska			
	Arizona	1		
	California	1		
	Colorado			
	Hawaii			
	Idaho			
	Montana			
	Nevada			
	Oregon			
	Utah			
	Washington			
Wyoming			2	2.4%
Total in US		60	60	73.2%
Intl		18	18	22.0%
Resident Alien		2	2	2.4%
Unknown		2	2	2.4%

Note: Percentage is the ratio of head counts out of total graduates (N=82)

Undergrad Enrollment by Gender and Ethnicity 2010-2012 (Reference: IPEDS Fall Enrollment)									
ETHNICITY/RACE	2010			2011			2012		
	Male	Female	Total	Male	Female	Total	Male	Female	Total
Nonresident Alien	93	53	146	102	76	178	104	80	184
Hispanic	63	69	132	73	79	152	79	79	158
Asian	68	37	105	72	43	115	58	55	113
Black	65	42	107	64	38	102	65	45	110
American Indian	5	1	6	2	1	3	1	0	1
Native Hawaiian/ Pacific Islander	0	1	1	0	1	1	0	0	0
White	1,333	1,505	2,838	1,327	1,491	2,818	1,303	1,528	2,831
Multi-race	25	41	66	36	40	76	54	52	106
Unknown	57	50	107	50	59	109	20	13	33
TOTAL	1,709	1,799	3,508	1,726	1,828	3,554	1,684	1,852	3,536
Total Percent Non-Residents	5.4%	2.9%	4.2%	5.9%	4.2%	5.0%	6.2%	4.3%	5.2%
Total Percent US Minority	13.2%	10.6%	11.9%	14.3%	11.1%	12.6%	15.4%	12.5%	13.8%

Figure 2.4 Percent Non-Residents by Gender_Undergraduate Enrollment Trends

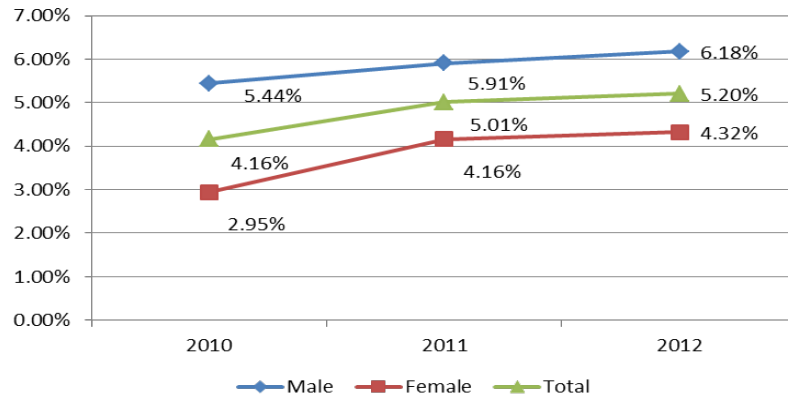
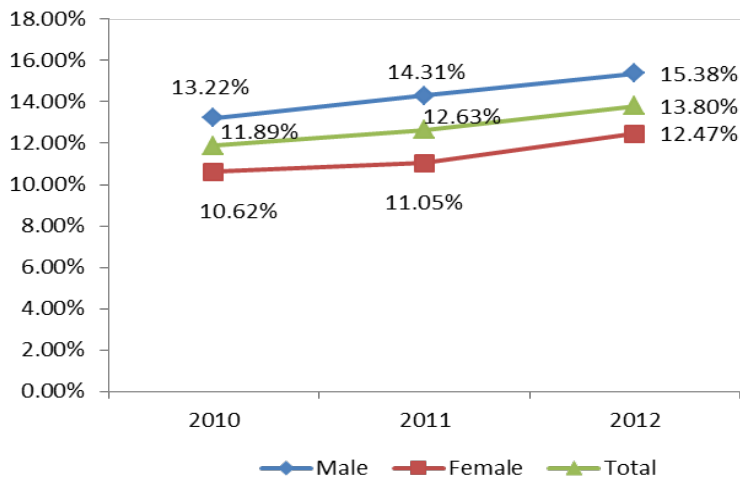


Figure 2.5 Percent U.S Minority by Gender_Undergraduate Enrollment Trend:



Graduate Enrollment by Gender and Ethnicity 2010-2012 (Reference: IPEDS Fall Enrollment)									
ETHNICITY/RACE	2010			2011			2012		
	Male	Female	Total	Male	Female	Total	Male	Female	Total
Nonresident Alien	4	7	11	3	10	13	5	13	18
Hispanic	0	1	1	1	2	3	1	2	3
Asian	2	1	3	0	1	1	1	0	1
Black	1	0	1	0	0	0	0	0	0
American Indian	0	0	0	0	0	0	0	0	0
Native Hawaiian/ Pacific Islander	0	0	0	0	0	0	0	0	0
White	37	43	80	28	29	57	25	29	54
Multi-race	0	1	1	0	1	1	0	0	0
Unknown	1	9	10	1	5	6	3	3	6
TOTAL	45	62	107	33	48	81	35	47	82
Total Percent Non-Residents	8.9%	11.3%	10.3%	9.1%	20.8%	16.0%	14.3%	27.7%	22.0%
Total Percent US Minority	6.7%	4.8%	5.6%	3.0%	8.3%	6.2%	5.7%	4.3%	4.9%

Total Enrollment by Gender and Ethnicity 2010-2012 (Reference: IPEDS Fall Enrollment)									
ETHNICITY/RACE	2010			2011			2012		
	Male	Female	Total	Male	Female	Total	Male	Female	Total
Nonresident Alien	97	60	157	105	86	191	109	93	202
Hispanic	63	70	133	74	81	155	80	81	161
Asian	70	38	108	72	44	116	59	55	114
Black	66	42	108	64	38	102	65	45	110
American Indian	5	1	6	2	1	3	1	0	1
Native Hawaiian/ Pacific Islander	0	1	1	0	1	1	0	0	0
White	1,370	1,548	2,918	1,355	1,520	2,875	1,328	1,557	2,885
Multi-race	25	42	67	36	41	77	54	52	106
Unknown	58	59	117	51	64	115	23	16	39
TOTAL	1,754	1,861	3,615	1,759	1,876	3,635	1,719	1,899	3,618
Total Percent Non-Residents	5.5%	3.2%	4.3%	6.0%	4.6%	5.3%	6.3%	4.9%	5.6%
Total Percent US Minority	13.1%	10.4%	11.7%	14.1%	11.0%	12.5%	15.1%	12.3%	13.6%

Completions by Field of Study

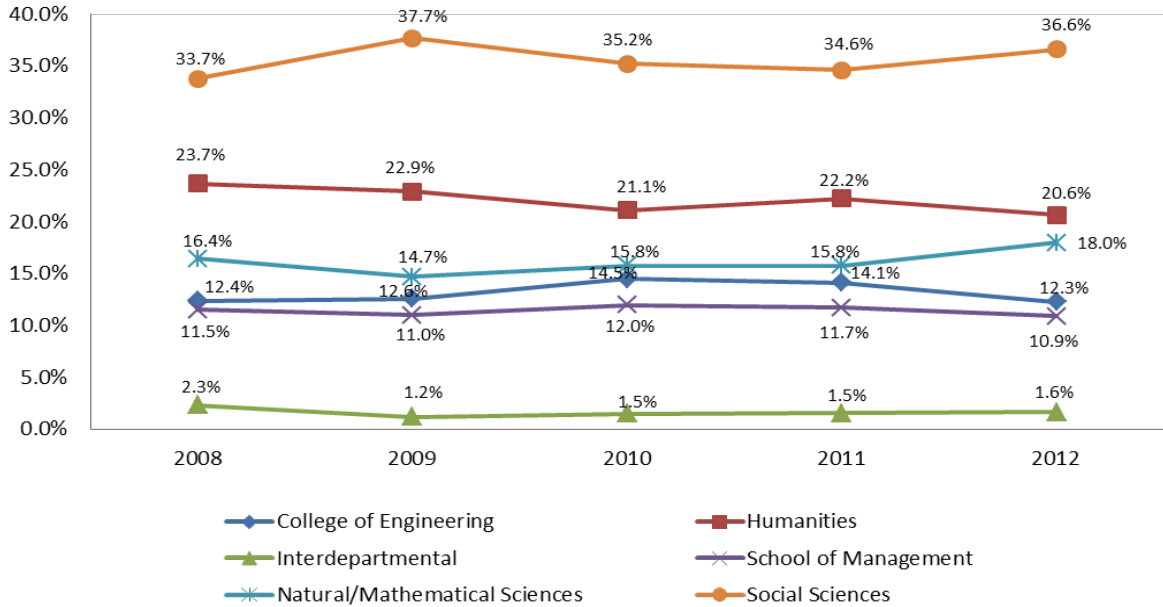
Completions by Field of Study BUCKNELL UNIVERSITY

Completions by Field of Study By Category 2007-08 through 2011-12 Reference: IPEDS Completions										
By Category	2007-08		2008-09		2009-10		2010-11		2011-12	
	First Major	Second Major	First Major	Second Major	First Major	Second Major	First Major	Second Major	First Major	Second Major
Undergraduate										
Agriculture	0	0	0	0	0	0	0	0	0	0
Architecture	0	0	0	0	0	0	0	0	0	0
Area and ethnic studies	15	3	12	5	7	7	4	9	6	6
Biological/life sciences	96	3	74	4	96	2	82	3	107	1
Business/marketing	130	0	118	0	129	0	122	0	112	8
Communications/communication technologies	0	0	0	0	0	0	0	0	0	0
Computer and info. sciences	13	1	9	1	11	1	12	1	10	0
Education	40	13	31	11	24	8	24	11	29	6
Engineering/engineering technologies	140	0	135	0	156	0	147	0	135	0
English	64	9	52	9	32	12	43	23	48	15
Foreign languages and literature	27	43	18	45	27	41	29	31	14	53
Health professions & related sciences	0	0	0	0	0	0	0	0	0	0
Home etc. & vocational home etc.	0	0	0	0	0	0	0	0	0	0
Interdisciplinary studies	7	7	7	3	10	2	11	3	12	1
Law/legal studies	0	0	0	0	0	0	0	0	0	0
Liberal arts/general studies	9	3	3	0	3	1	1	1	4	1
Library science	0	0	0	0	0	0	0	0	0	0
Mathematics	18	5	24	1	14	2	18	2	22	0
Military science and techs.	0	0	0	0	0	0	0	0	0	0
Natural resources/envir. science	16	4	13	2	6	8	17	6	29	6
Parks and recreation	0	0	0	0	0	0	0	0	0	0
Personal and misc. services	0	0	0	0	0	0	0	0	0	0
Philosophy, religion, theology	12	16	16	23	20	10	15	13	13	9
Physical sciences	29	1	28	2	28	2	20	3	19	4
Protective services/public admin.	0	0	0	0	0	0	0	0	0	0
Psychology	54	28	64	18	50	10	52	8	55	26
Social sciences	177	70	212	69	226	61	200	65	222	65
History	26	14	27	8	20	17	23	14	22	13
Trade and industry	0	0	0	0	0	0	0	0	0	0
Visual and performing arts	25	14	22	9	23	11	19	8	23	5
TOTAL UNDERGRADUATE	898	234	865	210	882	195	839	201	882	219
Graduate										
Biological/life sciences	3	0	3	0	4	0	3	0	3	0
Education	9	0	15	0	12	0	12	0	10	0
Engineering/engineering technologies	3	0	7	0	11	0	12	0	9	0
English	7	0	5	0	6	0	2	0	4	0
Physical sciences	5	0	3	0	6	0	5	0	4	0
Psychology	8	0	14	0	7	0	9	0	4	0
TOTAL GRADUATE	35	0	47	0	46	0	43	0	34	0

Completions by Field of Study By Gender and Race/Ethnic 2007-08 through 2011-12 Reference: IPEDS Completions											
		2007-08		2008-09		2009-10		2010-11		2011-12	
		First Major	Second Major	First Major	Second Major	First Major	Second Major	First Major	Second Major	First Major	Second Major
BY GENDER											
Undergraduate											
	Male	440	84	387	66	434	69	406	81	405	71
	Female	458	150	478	144	448	126	433	120	477	148
	TOTAL UNDERGRADUATE	898	234	865	210	882	195	839	201	882	219
Graduate											
	Male	14	0	20	0	24	0	17	0	16	0
	Female	21	0	27	0	22	0	26	0	18	0
	TOTAL GRADUATE	35	0	47	0	46	0	43	0	34	0
BY RACE/ETHNICITY											
Undergraduate											
	Non-resident Alien	26	6	24	9	26	6	15	1	40	9
	Hispanic	27	11	23	4	36	7	27	8	29	12
	Asian	73	15	63	19	47	14	29	8	37	6
	Black	26	6	20	2	28	7	24	9	16	1
	American Indian	9	3	0	0	1	0	2	0	0	0
	Native Hawaiian/ Pacific Islander	0	0	3	0	1	1	0	0	0	0
	White	706	187	687	163	703	153	712	170	719	186
	Multi-race	0	0	3	1	16	5	13	2	25	3
	Unknown	31	6	42	12	24	2	17	3	16	2
	TOTAL UNDERGRADUATE	898	234	865	210	882	195	839	201	882	219
Graduate											
	Non-resident Alien	2	0	2	0	6	0	1	0	1	0
	Hispanic	1	0	2	0	1	0	0	0	1	0
	Asian	1	0	1	0	0	0	2	0	0	0
	Black	0	0	0	0	2	0	1	0	0	0
	American Indian	0	0	0	0	0	0	0	0	0	0
	Native Hawaiian/ Pacific Islander	0	0	0	0	0	0	0	0	1	0
	White	30	0	40	0	31	0	38	0	27	0
	Multi-race	0	0	0	0	1	0	1	0	0	0
	Unknown	1	0	2	0	5	0	0	0	4	0
	TOTAL GRADUATE	35	0	47	0	46	0	43	0	34	0

Undergraduate Completions by Broad Disciplinary Category (2007-08 through 2011-12) Reference: IPEDS Completions																				
	2007-2008				2008-2009				2009-2010				2010-2011				2011-2012			
	First Major		Second Major		First Major		Second Major		First Major		Second Major		First Major		Second Major		First Major		Second Major	
	#	%	#	%	#	%	#	%	#	%	#	%	#	%	#	%	#	%	#	%
College of Engineering	140	16%	0	0%	135	16%	0	0%	156	18%	0	0%	147	17.5%	0	0%	135	15%	0	0%
Humanities	169	19%	99	42%	147	17%	99	47%	129	15%	98	50%	133	15.9%	98	49%	126	14%	101	46%
Interdepartmental	16	2%	10	4%	10	1%	3	1%	13	1%	3	2%	12	1.4%	4	2%	16	2%	2	1%
School of Management	130	14%	0	0%	118	14%	0	0%	129	15%	0	0%	122	14.5%	0	0%	112	13%	8	4%
Natural/Mathematical Sciences	172	19%	14	6%	148	17%	10	5%	155	18%	15	8%	149	17.8%	15	7%	187	21%	11	5%
Social Sciences	271	30%	111	47%	307	35%	98	47%	300	34%	79	41%	276	32.9%	84	42%	306	35%	97	44%
Total	898	100%	234	100%	865	100%	210	100%	882	100%	195	100%	839	100%	201	100%	882	100%	219	100%

**Figure 3.1 Percentage of Undergraduate Completions by Broad Disciplinary Category
(Combine First and Second Major Together)**



Total Undergraduate Completions	2008	2009	2010	2011	2012
	1132	1075	1077	1040	1101

Academics and Extracurricular

Academics and Extracurricular

BUCKNELL UNIVERSITY

Undergraduate Majors Declared											
Based on Fall Enrollment											
	College/School	2008		2009		2010		2011		2012	
		#	%	#	%	#	%	#	%	#	%
Animal Behavior		34	0.96%	36	1.03%	33	0.94%	38	0.98%	42	1.06%
Art & Art History		26	0.73%	20	0.57%	17	0.48%	21	0.54%	24	0.61%
Biochemistry		77	2.17%	62	1.77%	59	1.68%	60	1.54%	61	1.54%
Biology		168	4.74%	185	5.28%	198	5.64%	223	5.73%	218	5.51%
Chemistry		54	1.52%	42	1.20%	44	1.25%	41	1.05%	31	0.78%
Classics		9	0.25%	13	0.37%	15	0.43%	17	0.44%	11	0.28%
Comparative Humanities		9	0.25%	7	0.20%	4	0.11%	9	0.23%	7	0.18%
Computer Science		27	0.76%	35	1.00%	35	1.00%	42	0.00%	42	1.06%
East Asian Studies		12	0.34%	8	0.23%	5	0.14%	11	0.28%	7	0.18%
Economics		219	6.18%	188	5.37%	175	4.99%	204	5.24%	188	4.75%
Education		80	2.26%	84	2.40%	85	2.42%	94	2.42%	97	2.45%
English		89	2.51%	80	2.29%	78	2.22%	104	2.67%	93	2.35%
Environmental Studies		29	0.82%	34	0.97%	51	1.45%	69	1.77%	40	1.01%
French		7	0.20%	10	0.29%	10	0.29%	22	0.57%	15	0.38%
Geology		17	0.48%	13	0.37%	10	0.29%	18	0.46%	22	0.56%
Geography		5	0.14%	7	0.20%	11	0.31%	14	0.36%	9	0.23%
German		1	0.03%	3	0.09%	3	0.09%	6	0.15%	5	0.13%
History		46	1.30%	44	1.26%	42	1.20%	70	1.80%	55	1.39%
Interdisciplinary Studies	College of Arts and Sciences	6	0.17%	6	0.17%	5	0.14%	11	0.28%	11	0.28%
Interdisciplinary Study in Economics and Mathematics		3	0.08%	28	0.80%	33	0.94%	44	1.13%	60	1.52%
International Relations		65	1.83%	65	1.86%	53	1.51%	77	1.98%	58	1.47%
Italian Studies			0.00%		0.00%		0.00%	5	0.13%	9	0.23%
Latin American Studies		2	0.06%	1	0.03%	0	0.00%	1	0.03%	1	0.03%
Mathematics		56	1.58%	62	1.77%	68	1.94%	72	1.85%	66	1.67%
Music		22	0.62%	18	0.51%	14	0.40%	22	0.57%	21	0.53%
Neuroscience		53	1.50%	78	2.23%	76	2.17%	91	2.34%	91	2.30%
Philosophy		26	0.73%	30	0.86%	23	0.66%	23	0.59%	24	0.61%
Physics & Astronomy		35	0.99%	10	0.29%	27	0.77%	34	0.87%	47	1.19%
Political Science		89	2.51%	112	3.20%	101	2.88%	138	3.55%	150	3.79%
Psychology		112	3.16%	100	2.86%	105	2.99%	162	4.16%	162	4.09%
Religion		8	0.23%	4	0.11%	7	0.20%	8	0.21%	14	0.35%
Russian		1	0.03%	4	0.11%	0	0.00%	5	0.13%	5	0.13%
Sociology and Anthropology		48	1.35%	48	1.37%	59	1.68%	76	1.95%	79	2.00%
Spanish		21	0.59%	27	0.77%	14	0.40%	64	1.64%	46	1.16%
Theatre		7	0.20%	13	0.37%	11	0.31%	19	0.49%	15	0.38%
Undeclared		1,138	32.10%	1,034	29.53%	1,058	30.16%	1,039	26.70%	1,167	29.48%
Women's & Gender Studies		3	0.08%	2	0.06%	1	0.03%	12	0.31%	13	0.33%
Accounting	School of Management	112	3.16%	107	3.06%	110	3.14%	89	2.29%	68	1.72%
Financial Management and Others*		276	7.79%	283	8.08%	275	7.84%	220	5.65%	213	5.38%
Biomedical Engineering	College of Engineering	55	1.55%	54	1.54%	53	1.51%	55	1.41%	61	1.54%
Chemical Engineering		102	2.88%	113	3.23%	118	3.36%	112	2.88%	103	2.60%
Civil and Environmental Engineering		140	3.95%	160	4.57%	159	4.53%	153	3.93%	152	3.84%
Computer Engineering		51	1.44%	57	1.63%	66	1.88%	92	2.36%	94	2.37%
Electrical Engineering		72	2.03%	67	1.91%	69	1.97%	61	1.57%	64	1.62%
Mechanical Engineering		133	3.75%	147	4.20%	128	3.65%	135	3.47%	140	3.54%
Engineering, general								51	1.31%	57	1.44%
Total majors declared		3,545		3,501		3,508		3,892**		3,958**	

* Prior to 2012, there were two majors in School of Management: Accounting and Financial Management. Other Management majors created in 2012 include Global Management, Managing for Sustainability, Markets, Innovation and Design.

** In 2011 and 2012, Students who declared more than one major were double counted.

Undergraduate Off Campus Experience by Program Fall Terms (2007-2011)										
Program	Fall 2007		Fall 2008		Fall 2009		Fall 2010		Fall 2011	
	#	%	#	%	#	%	#	%	#	%
3rd Party Provider	74	63%	49	55%	64	70%	86	60%	66	69%
Bucknell in Barbados	0	0%	0	0%	0	0%	0	0%	0	0%
Bucknell en Espana	16	14%	14	16%	8	9%	21	15%	12	13%
Bucknell en France	9	8%	11	12%	8	9%	11	8%	10	10%
Bucknell in London	16	14%	14	16%	11	12%	25	17%	8	8%
Associated Kyoto	1	1%	1	1%	0	0%	0	0%	0	0%
Washington Semester	2	2%	0	0%	0	0%	0	0%	0	0%
Nottingham Exchange	0	0%	0	0%	0	0%	0	0%	0	0%
Total	118	100%	89	100%	91	100%	143	100%	96	100%
Total Junior	899		895		864		908		901	
Percentage Based on Junior	13%		10%		11%		16%		11%	

Undergraduate Off Campus Experience by Program Spring Terms (2008-2012)										
Program	Spring 2008		Spring 2009		Spring 2010		Spring 2011		Spring 2012	
	#	%	#	%	#	%	#	%	#	%
3rd Party Provider	219	85%	208	81%	196	84%	185	73%	151	71%
Bucknell in Barbados	2	1%	4	2%	0	0%	0	0%	0	0%
Bucknell en Espana	22	8%	28	11%	26	11%	26	10%	26	12%
Bucknell en France	14	5%	15	6%	9	4%	13	5%	13	6%
Bucknell in London	0	0%	0	0%	0	0%	24	9%	19	9%
Associated Kyoto	1	0%	1	0%	0	0%	2	1%	1	0%
Washington Semester	0	0%	0	0%	0	0%	0	0%	0	0%
Nottingham Exchange	1	0%	0	0%	3	1%	3	1%	2	1%
Total	259	100%	256	100%	234	100%	253	100%	212	100%
Total Junior	891		889		849		894		898	
Percentage Based on Junior	29%		29%		28%		28%		24%	

Undergraduate Off Campus Experience by Program Summer Terms (2008-2012)										
Program	Summer 2008		Summer 2009		Summer 2010		Summer 2011		Summer 2012	
	#	%	#	%	#	%	#	%	#	%
Bucknell in Virgin Islands (BIOL)	24	24%	29	25%	29	29%	28	24%	29	33%
Bucknell in Barbados (ECON)	24	24%	27	23%	30	30%	9	8%	7	8%
Bucknell in Northern Ireland (PSYC)	23	23%	16	14%	0	0%	12	10%	0	0%
ENGR 290 Global and Societal Context	31	30%	27	23%	25	25%	29	25%	21	24%
Bucknell in Nicaragua (GEOG)	0	0%	17	15%	0	0%	16	14%	0	0%
Greece & Turkey: East & West (CLAS/HUMN)	0	0%	0	0%	15	15%	10	9%	0	0%
Child Development in Denmark (PYSC)	0	0%	0	0%	0	0%	11	10%	12	14%
South Africa: Community&Identity (ECON/PSYC)	0	0%	0	0%	0	0%	0	0%	19	22%
Total	102	100%	116	100%	99	100%	115	100%	88	100%
Total Junior	891		889		849		894		898	
Percentage Based on Junior	11%		13%		12%		13%		10%	

Undergraduate Off Campus Experience by Program Summary Table (2008-2012)												
Program	2007-2008		2008-2009		2009-2010		2010-2011		2011-2012		Average	
	#	%	#	%	#	%	#	%	#	%	#	%
Fall and Spring Programs												
3rd Party Provider	293	78%	257	74%	260	80%	271	68%	217	70%	259.6	74%
Bucknell in Barbados	2	1%	4	1%	0	0%	0	0%	0	0%	3	0%
Bucknell en Espana	38	10%	42	12%	34	10%	47	12%	38	12%	39.8	11%
Bucknell en France	23	6%	26	8%	17	5%	24	6%	23	7%	22.6	6%
Bucknell in London	16	4%	14	4%	11	3%	49	12%	27	9%	23.4	7%
Associated Kyoto	2	1%	2	1%	0	0%	2	1%	1	0%	1.4	0%
Washington Semester	2	1%	0	0%	0	0%	0	0%	0	0%	0.4	0%
Nottingham Exchange	1	0%	0	0%	3	1%	3	1%	2	1%	1.8	1%
Total	377	100%	345	100%	325	100%	396	100%	308	100%	350.2	100%
Summer Programs												
Bucknell in Virgin Islands (BIOL)	24	24%	29	25%	29	29%	28	24%	29	33%	27.8	27%
Bucknell in Barbados (ECON)	24	24%	27	23%	30	30%	9	8%	7	8%	19.4	19%
Bucknell in Northern Ireland (PSYC)	23	23%	16	14%	0	0%	12	10%	0	0%	10.2	9%
ENGR 290 Global and Societal Context	31	30%	27	23%	25	25%	29	25%	21	24%	26.6	26%
Bucknell in Nicaragua (GEOG)	0	0%	17	15%	0	0%	16	14%	0	0%	6.6	6%
Greece & Turkey: East & West (CLAS/HUMN)	0	0%	0	0%	15	15%	10	9%	0	0%	5	5%
Child Development in Denmark (PYSC)	0	0%	0	0%	0	0%	11	10%	12	14%	4.6	5%
South Africa: Community&Identity (ECON/PSYC)	0	0%	0	0%	0	0%	0	0%	19	22%	3.8	4%
Total	102	100%	116	100%	99	100%	115	100%	88	100%	104	100%
Total Academic Year (Fall, Spring, and Summer)	479		461		424		511		396		454.2	
Total Juniors	891		889		849		894		898		884	
Summary												
The following is based on Junior Class Enrollments												
3rd Party Providers		33%		29%		31%		30%		24%		29%
Bucknell Ins (Semester or Year)		9%		10%		7%		13%		10%		10%
Bucknell Ins (Summer)		11%		13%		12%		13%		10%		12%
Percentage based on Juniors (Semester or Year)		42%		39%		38%		44%		34%		40%
Percentage based on Juniors (Including Summer)		54%		52%		50%		57%		44%		51%
The following is based on those studying Off-Campus												
Percentage on 3rd Party		78%		74%		80%		68%		70%		74%
Percentage on Bucknell In		21%		25%		19%		30%		29%		25%
Percentage on BU Associated		1.33%		0.58%		0.92%		1.26%		0.97%		1.01%

Undergraduate Off Campus Experience by Non-Credit Program 2008-2012										
Non-Credit Program	Spring 2008		Spring 2009		Spring 2010		Spring 2011		Spring 2012	
	#	%	#	%	#	%	#	%	#	%
Bucknell Brigade (January, March)	0	0%	42	33%	43	23%	43	31%	42	19%
Katrina Recovery (January, May)	0	0%	41	32%	41	22%	36	26%	41	19%
ACES spring break	15	21%	12	9%	13	7%	12	9%	15	7%
GEOL spring break trips (Domestic)	16	23%	17	13%	17	9%	21	15%	18	8%
Civil Rights spring break (Domestic)	0	0%	0	0%	13	7%	9	6%	16	7%
Music Choir Tours (International)	40	56%	0	0%	40	22%	0	0%	40	19%
Music Choir Tours (Domestic)	0	0%	16	13%	16	9%	16	12%	16	7%
Undergraduate Research Abroad	0	0%	0	0%	0	0%	2*	1%	0	0%
Hillel Morocco	0	0%	0	0%	0	0%	0	0%	18	8%
Outdoor Ed (International)	0	0%	0	0%	0	0%	0	0%	10	5%
Outdoor Ed (Domestic)	0	0%	0	0%	0	0%	0	0%	0	0%
Japan Sustainability experience	0	0%	0	0%	0	0%	0	0%	0	0%
Total Non Credit	71		128		183		139		216	
Total Junior	891		889		849		894		898	
Percentage Based on Junior	8%		14%		22%		16%		24%	

* Two students attended undergraduate research abroad in 2011 summer.

Student Athletic Participation					
	2008-09	2009-10	2010-11	2011-12	2012-13
Intercollegiate Sports					
Men	18%	21%	23%	23%	21%
Women	22%	21%	23%	23%	21%
Overall	19%	21%	23%	23%	21%
Intramural Sports					
Men	34%	36%	36%	36%	36%
Women	18%	15%	15%	15%	15%
Overall	37%	38%	38%	38%	38%

Student Greek Participation															
	2008-09			2009-10			2010-11			2011-12			2012-13		
	Men	Women	Total	Men	Women	Total	Men	Women	Total	Men	Women	Total	Men	Women	Total
Number of Greek Organizations (Active)	13	6	19	12	8	20	12	8	20	11	8	19	11	8	19
Number of Students in Active Greek Organizations (includes fall rush)	693	719	1,412	725	857	1,582	731	850	1,581	747	962	1,709	656	810	1,466
% of All Undergraduates (all 4 classes)	39%	40%	40%	42%	47%	45%	43%	48%	45%	43%	51%	47%	39%	43%	41%
% of ELIGIBLE Undergraduates (sophomores to seniors)	54%	53%	53%	57%	64%	60%	58%	66%	61%	57%	69%	63%	52%	59%	55%

Student Success

Student Success

BUCKNELL UNIVERSITY

Cohort Retention and Graduation Rates								
Class of	Entered Fall	First-Year Cohort	Returned Sophomore Year	Retention Rate	Graduated Within 4 Years	Graduation Rate in 4 Yrs	Graduated Within 6 Years	Graduation Rate in 6 yrs
2001	1997	898	844	94%	745	83%	798	89%
2002	1998	953	896	94%	797	84%	851	89%
2003	1999	889	836	94%	756	85%	797	90%
2004	2000	914	862	94%	773	85%	816	89%
2005	2001	913	863	95%	784	86%	817	89%
2006	2002	914	859	94%	779	85%	814	89%
2007	2003	906	864	95%	794	88%	815	90%
2008	2004	906*	867	95%	817	89%	835	91%
2009	2005	920	883	96%	804	87%	837	91%
2010	2006	921*	868	94%	792	86%	833	90%
2011	2007	887	843	95%	772	87%		
2012	2008	957	896	94%	813	85%		
2013	2009	920	865	94%				
2014	2010	929	871	94%				
2015	2011	916	873	95%				
2016	2012	918						

*adjusted for permissible omissions

Faculty and Staff

Faculty and Staff

BUCKNELL UNIVERSITY

Faculty Status Report as of Fall 2012										
	All (Full time, part time, and replacement)	Full Time by Gender			Tenured Full Time		Non-Tenured Full Time		Part-Time	Replacement
		Full-Time Total	Men	Women	Men	Women	Men	Women	Total	Total
College of Arts & Sciences	306	268	147	121	105	75	42	46	21	17
College of Engineering	76	69	51	18	31	7	20	11	1	6
School of Management	28	24	17	7	8	3	9	4	3	1
TOTAL	410	361	215	146	144	85	71	61	25	24
Undergraduate faculty by department not including athletics or library										
Art & Art History	8	7	2	5	1	4	1	1	1	0
Biology	21	19	10	9	7	5	3	4	1	1
Biomedical Engineering	6	5	3	2	3	0	1	2	1	0
Chemical Engineering	12	12	10	2	6	2	4	0	0	0
Chemistry	15	14	11	3	8	3	3	0	0	1
Civil and Environmental Engineering	18	14	11	3	9	0	2	3	0	4
Classics	6	5	2	3	1	2	1	1	0	1
Comparative Humanities Program	2	2	2	0	1	0	1	0	0	0
Computer Science	11	11	9	2	6	1	3	1	0	0
East Asian Studies	6	6	3	3	2	0	1	3	0	0
Economics	18	16	10	6	8	4	2	2	0	2
Education	12	12	2	10	1	6	1	4	0	0
Electrical Engineering	10	10	8	2	3	1	5	1	0	0
English	28	24	10	14	9	10	1	4	4	0
Environmental Studies	3	2	1	1	1	1	0	0	0	1
Geography	5	5	4	1	4	1	0	0	0	0
Geology	8	7	5	2	4	1	1	1	0	1
History	10	9	6	3	4	2	2	1	0	1
International Relations	5	5	2	3	1	1	1	2	0	0
Languages, Cultures, & Linguistics	22	19	10	9	6	5	4	4	1	2
Management	28	24	17	7	8	3	9	4	3	1
Mathematics	27	22	14	8	11	4	3	4	2	3
Mechanical Engineering	19	17	10	7	4	3	5	4	0	2
Music	16	11	6	5	4	2	2	3	4	1
Philosophy	8	7	6	1	4	1	2	0	0	1
Physics and Astronomy	14	14	9	5	7	3	2	2	0	0
Political Science	12	12	9	3	6	3	3	0	0	0
Psychology	14	14	8	6	7	2	1	4	0	0
Religion	8	7	3	4	1	4	2	0	0	1
Sociology & Anthropology	15	11	5	6	4	2	1	4	3	1
Spanish Department	10	9	5	4	1	4	4	0	1	0
Theatre & Dance	7	7	2	5	2	3	0	2	0	0
Women's and Gender Studies	3	2	0	2	0	2	0	0	1	0
Other	3	0	0	0	0	0	0	0	3	0
Total	410	361	215	146	144	85	71	61	25	24

Total Number Faculty with Doctorate or Other Terminal Degree								
	Fall 2011				Fall 2012			
	Full Time	Replacement	Part Time	Total	Full Time	Replacement	Part Time	Total
	Female	140	9	1	150	141	5	5
Male	207	7	9	223	211	9	6	226
Total	347	16	10	373	352	14	11	377

Faculty Demographics as of Fall 2011							
Full-Time Faculty (Exclude Replacement Faculty)							
	Tenured		Tenure Track		Non-Tenure Track		Total
	Men	Women	Men	Women	Men	Women	
Professors	55	28	0	0	1	0	84
Associate Professors	86	54	2	0	1	3	146
Assistant Professors	0	0	55	49	12	12	128
Instructors	0	0	0	0	0	0	0
TOTAL	141	82	57	49	14	15	358
	Total Tenured	223	Total Tenure Track	106	Total Non-Tenure Track	29	358
Visiting Professors	0	0	0	0	0	0	0
Visiting Associate Professors	0	0	0	0	0	1	1
Visiting Assistant Professors	0	0	0	0	12	12	24
Visiting Instructors	0	0	0	0	0	0	0
TOTAL	0	0	0	0	12	13	25

* Visiting Faculty include both regular and replacement faculty

Faculty Demographics as of Fall 2012							
Full-Time Faculty (Excluding Replacement Faculty)							
	Tenured		Tenure Track		Non-Tenure Track		Total
	Men	Women	Men	Women	Men	Women	
Professors	64	29	0	1	1	0	95
Associate Professors	80	56	3	1	3	3	146
Assistant Professors	0	0	56	43	8	12	119
Instructors	0	0	0	0	0	1	1
TOTAL	144	85	59	45	12	16	361
	Total Tenured	229	Total Tenure Track	104	Total Non-Tenure Track	28	361
Visiting Professors	1	0	0	0	0	0	1
Visiting Associate Professors	0	0	0	0	2	1	3
Visiting Assistant Professors	0	0	0	0	8	12	20
Visiting Instructors	0	0	0	0	0	1	1
TOTAL	1	0	0	0	10	14	25

* Visiting Faculty include both regular and replacement faculty

Employee Demographics as of Fall 2011							
Full-Time Faculty and Staff							
	Faculty (Exclude Replacement)		Administrative/ Professional		Staff		Total
	Men	Women	Men	Women	Men	Women	
Non-Resident Aliens	7	4	0	0	0	0	11
Black, non-Hispanic	7	9	8	3	1	0	28
American Indian / Alaskan Native	2	0	3	0	0	1	6
Asian Pacific Islander	9	5	6	1	0	0	21
Hispanic	5	6	2	4	2	1	20
White, Non-Hispanic	175	116	185	206	90	291	1,063
Multi-racial	6	1	0	3	0	0	10
Unknown	1	5	1	1	0	2	10
TOTAL	212	146	205	218	93	295	
	Total Faculty	358	Total Administrative	423	Total Staff	388	1,169

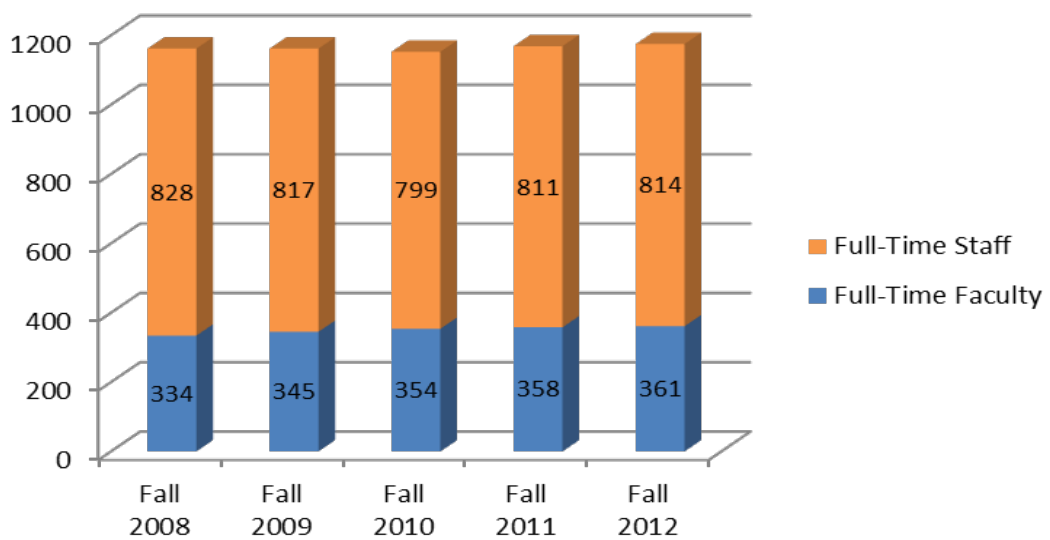
Employee Demographics as of Fall 2012							
Full-Time Faculty and Staff							
	Faculty (Exclude Replacement)		Administrative/ Professional		Staff		Total
	Men	Women	Men	Women	Men	Women	
Non-Resident Aliens	3	5	2	0	0	0	10
Black, non-Hispanic	6	10	8	3	1	0	28
American Indian / Alaskan Native	2	0	3	1	0	0	6
Asian Pacific Islander	12	7	7	1	0	1	28
Hispanic	7	7	2	3	1	3	23
White, Non-Hispanic	174	113	189	205	155	218	1,054
Multi-racial	9	1	2	4	0	3	19
Unknown	2	3	3	1	1	1	11
TOTAL	215	146	216	218	158	226	
Total Faculty	361		Total Administrative	434	Total Staff	384	1,179

Number of Staff by Employment Status and Occupational Category (Fall 2012)			
Occupational category	# Full-Time Staff	# Part-Time Staff	# FTE staff
Total number of staff	1,199	46	1,214
Postsecondary Teachers	385	25	393
Instructional Staff	385	25	393
Instruction	52	25	60
Exclusively credit	52	25	60
Exclusively not-for-credit	0	0	0
Combined credit/not-for-credit	0	0	0
Instruction/research/public service	333	0	333
Research	0	0	0
Public Service	0	0	0
Library and Instructional Support Occupations	29	4	30
Librarians, Curators, and Archivists	16	0	16
Archivists, Curators, and Museum Technicians	2	0	2
Librarians	7	0	7
Library Technicians	7	0	7
Other Teachers and Instructional Support Staff	13	4	14
Management Occupations	143	2	144
Business and Financial Operations Occupations	86	0	86
Computer, Engineering, and Science Occupations	93	1	93
Community Service, Legal, Arts, and Media Occupations	68	0	68
Healthcare Practitioners and Technical Occupations	9	0	9
Service Occupations	168	2	169
Sales and Related Occupations	0	0	0
Office and Administrative Support Occupations	159	11	163
Natural Resources, Construction, and Maintenance Occupations	55	0	55
Production, Transportation, and Material Moving Occupations	4	1	4

Staff by Primary Function and Employment Status															
	Fall 2008			Fall 2009			Fall 2010			Fall 2011			Fall 2012		
	Full Time	R*	Part Time	Full Time	R	Part Time	Full Time	R	Part Time	Full Time	R	Part Time	Full Time	R	Part Time
Primarily instruction + Instruction/research/public service	334	NA	24	345	23	22	354	17	20	358	21	21	361	24	25
Total Staff	828		22	817		21	799		22	811		22	814		21
Executive/administrative/managerial	208		1	212		0	226		0	124		0			
Other professionals (support/service)	201		10	203		9	189		9	299		10			
Technical and paraprofessionals	27		1	24		1	25		2	24		2			
Clerical and secretarial	170		7	156		8	146		8	149		7			
Skilled crafts	62		0	62		0	60		0	60		0			
Service/Maintenance	160		3	160		3	153		3	155		3			
Grand Total	1162	NA	46	1162	23	43	1153	17	42	1169	21	43	1175	24	46

*R stands for replacement faculty

Figure 6.1 Number of Full-Time Faculty and Staff Trends



Full-Time Faculty Salary							
Average Annualized Salary 2004-05 through 2012-13 (Exclude Replacement Faculty)							
Year	Rank	# Men	# Women	Total	Men Salary	Women Salary	Average Salary
2012-13	Professor	65	30	95	\$114,634	\$102,631	\$110,843
	Associate Professor	86	60	146	\$87,328	\$83,818	\$85,885
	Assistant Professor	64	55	119	\$75,753	\$74,666	\$75,251
	Instructor	0	1	1		\$55,070	\$55,070
2011-12	Professor	56	28	84	\$114,990	\$100,945	\$110,308
	Associate Professor	89	57	146	\$85,175	\$82,527	\$84,141
	Assistant Professor	67	61	128	\$73,227	\$72,851	\$73,048
	Instructor	0	0	0			
2010-11	Professor	60	24	84	\$114,422	\$102,085	\$110,897
	Associate Professor	86	54	140	\$83,217	\$82,021	\$82,756
	Assistant Professor	66	62	128	\$74,608	\$73,453	\$74,048
	Instructor	1	0	1	\$70,000		\$70,000
	Other	0	1	1		\$58,180	\$58,180
2009-10	Professor	57	17	74	\$115,166	\$104,389	\$112,690
	Associate Professor	85	57	142	\$82,201	\$81,486	\$81,914
	Assistant Professor	69	60	129	\$73,042	\$70,631	\$71,921
	Instructor	0	0	0			
2008-09	Professor	60	17	77	\$115,066	\$105,682	\$112,994
	Associate Professor	74	52	126	\$84,119	\$82,553	\$83,473
	Assistant Professor	70	58	128	\$71,757	\$70,374	\$71,131
	Instructor	1	2	3	\$65,060	\$47,060	\$53,060
2007-08	Professor	57	14	71	\$113,055	\$103,065	\$111,085
	Associate Professor	77	50	127	\$81,209	\$79,420	\$80,505
	Assistant Professor	62	56	118	\$68,892	\$66,463	\$67,739
	Instructor	0	1	1		\$49,000	\$49,000
2006-07	Professor	57	13	70	\$110,572	\$102,995	\$109,165
	Associate Professor	73	48	121	\$80,737	\$77,672	\$79,521
	Assistant Professor	56	54	110	\$68,465	\$63,490	\$66,023
	Instructor	0	0	0			
2005-06	Professor	59	10	69	\$103,411	\$91,809	\$101,730
	Associate Professor	66	43	109	\$75,132	\$72,464	\$74,079
	Assistant Professor	70	51	121	\$62,593	\$61,066	\$61,949
	Instructor	0	0	0			
2004-05	Professor	62	11	73	\$100,051	\$86,946	\$98,076
	Associate Professor	63	43	106	\$73,288	\$69,385	\$71,705
	Assistant Professor	69	52	121	\$58,822	\$56,515	\$57,831
	Instructor	0	0	0			

Full-Time Faculty Highest Degrees Earned					
Conferring Institutions					
Fall 2012					
Institution	#	Institution	#	Institution	#
American University Dc	1	Oxford Univ, England	1	University Missouri Columbia	1
Arizona State University	1	Pennsylvania State University	25	University Missouri St Louis	1
Boston University	1	Princeton University	8	University Nebraska Lincoln	1
Brandeis University	2	Purdue Univ West Lafayette	2	University of Arizona	3
Brown University	5	Rensselaer Polytechnic Inst	1	University of Bamberg	1
Bucknell University	1	Smith College	1	University of Cambridge	3
Calif Institute Tech	1	Stanford University	9	University of Chicago	5
Cardiff University	1	SUNY at Albany	2	University of Georgia	3
Carnegie Mellon University	5	SUNY at Binghamton	1	University of Idaho	1
Claremont Graduate University	1	SUNY at Buffalo	1	University of Kansas	2
Clark University	2	Syracuse University	2	University of Mainz	1
Clemson University	1	Texas Tech University	2	University of Memphis	1
Coll William and Mary	1	Univ Maryland College Park	7	University of Michigan	2
Colorado State Univ Ft Collins	1	Univ Minnesota Minneapolis	1	University of North Carolina	2
Columbia University	8	Univ New Mexico Albuquerque	1	University of Notre Dame	1
Cornell University	15	Univ North Carolina Chapel HI	10	University of Paris Diderot	1
Dartmouth College	3	Univ of Zurich, Switzerland	1	University of Pennsylvania	8
Duke University	8	Univ Pittsburgh	3	University of Washington	5
Eastman School of Music	1	Univ South Carolina Columbia	2	University of Wisconsin	1
Emory University	4	Univ of Melbourne, Australia	1	University Oregon	2
Frankfurt University	1	Univ of Wisconsin - Madison	1	University Rochester	3
Harvard University	5	University Alabama Tuscaloosa	1	University Southern California	2
Howard University	2	University Calif Berkeley	4	University Tennessee Knoxville	2
IESE/Universidad de Navarra	1	University Calif Davis	4	University Texas Austin	9
Indiana University Bloomington	10	University Calif Los Angeles	1	University Texas Dallas	1
Iowa State University	2	University Calif Riverside	1	University Toronto	1
Johns Hopkins U Undergrad Adm	3	University Calif San Diego	2	University Utah	2
Lehigh University	2	University Calif Santa Barbara	2	University Virginia	8
Louisiana State University	1	University Calif Santa Cruz	1	University Wisc Madison	9
Mass Institute Technology	4	University Cambridge	1	University Wisconsin Colleges	1
McGill University	2	University Cincinnati	3	Va Tech Center For Teacher Ed	1
Michigan State University	7	University Colorado Boulder	4	Virginia Commonwealth Univ	1
Middlebury College	1	University Connecticut	3	Virginia Polytech Inst St U	11
New School	1	University Delaware	1	Washington University	1
New York University	2	University Denver	1	West Virginia Univ Morgantown	2
Northwestern College	1	University Florida	2	Worcester Poly Institute	1
Northwestern University	2	University of Illinois_Urbana-Champaign	7	Yale University	6
Ohio State University Columbus	7	University Iowa	6	York University	2
Ohio University	2	University Mass Amherst	3	Youngstown State University	1
Oregon State University	1	University Michigan Ann Arbor	3		
Total					361

Finance

Tuition and Fees History						
Undergraduate	2007-08	2008-09	2009-10	2010-11	2011-12	2012-2013
Tuition	\$37,934	\$39,434	\$40,594	\$42,112	\$43,628	\$45,132
Fees	\$200	\$218	\$222	\$230	\$238	\$246
Total Tuition&Fees	\$38,134	\$39,652	\$40,816	\$42,342	\$43,866	\$45,378
Board	\$3,600	\$3,816	\$4,014	\$4,170	\$4,326	\$4,482
Room Rate (Double)	\$4,452	\$4,912	\$5,490	\$5,768	\$6,048	\$6,330
Total Room&Board	\$8,052	\$8,728	\$9,504	\$9,938	\$10,374	\$10,812
Tuition, Fees, Room & Board (Comprehensive Fee)	\$46,186	\$48,380	\$50,320	\$52,280	\$54,240	\$56,190
Tuition, Fees, Room & Board Annual % Change	6.50%	4.75%	4.00%	3.90%	3.75%	3.60%
Books and Supplies	\$750	\$870	\$880	\$900	\$900	\$900
Single course Rate	\$4,165	\$4,330	\$4,455	\$4,624	\$4,790	\$4,955
Full-time Graduate Tuition, Annual	\$16,660	\$17,320	\$17,820	\$18,496	\$19,160	\$19,820
Price Index Comparisons	2007-08	2008-09	2009-10	2010-11	2011-12	2012-13
Higher Education Price Index (HEPI) Prices	260.3	273.2	279.3	281.8	288.4	293.2
Higher Education Price Index (HEPI) Annual % Change	2.80%	5%	2.30%	0.90%	2.30%	1.70%
Consumer Price Index (CPI) Prices	207.3	215.303	214.537	218.056	224.939	229.594
Consumer Price Index (CPI) Annual % Change	4.1%	0.1%	2.7%	1.5%	3.0%	1.7%

Endowment Market Value				
Peer Comparisons 2011-12				
Rank	Institution	June 30, 2011	June 30, 2012	% Change
10	Bucknell	\$575,367,000	\$599,216,000	4.1%
6	Colgate	\$700,993,881	\$687,474,010	-1.9%
1	Dartmouth	\$3,413,406,000	\$3,486,384,000	2.1%
12	Davidson	\$505,041,458	\$501,799,077	-0.6%
11	Furman	\$572,162,347	\$550,265,503	-3.8%
9	Holy Cross	\$607,712,000	\$589,769,000	-3.0%
7	Lafayette	\$649,597,887	\$640,768,818	-1.4%
4	Lehigh	\$1,031,945,000	\$995,284,000	-3.6%
5	Middlebury	\$978,822,000	\$952,078,000	-2.7%
2	Richmond	\$1,888,019,000	\$1,874,291,000	-0.7%
13	Trinity	\$436,652,800	\$439,120,043	0.6%
14	Villanova	\$375,061,000	\$357,022,000	-4.8%
3	Wake Forest	\$1,032,452,000	\$1,000,133,000	-3.1%
8	William & Mary	\$624,700,000*	\$644,200,000*	3.1%
Average		\$956,566,598	\$951,271,747	-1.1%

*Estimates from Audited Financial Report

Endowment Market Value and Spending per Student				
Year (as of June 30)	Endowment Market Value	Market Value Per FTE Student	Spending for Year	Spending from Endowment per FTE Student
2004	\$429,401,000	\$119,434	\$21,950,000	\$6,105
2005	\$472,070,000	\$133,203	\$22,332,000	\$6,301
2006	\$522,059,000	\$145,692	\$21,980,000	\$6,134
2007	\$599,399,000	\$164,458	\$23,336,000	\$6,403
2008	\$554,592,000	\$153,840	\$27,352,000	\$7,587
2009	\$442,826,000	\$120,803	\$27,918,000	\$7,616
2010	\$491,495,000	\$135,536	\$27,682,000	\$7,634
2011	\$575,367,000	\$160,973	\$28,646,000	\$8,014
2012	\$599,216,000	\$166,403	\$28,646,000	\$7,955

Note: Estimates from Audited Financial Report divided by student FTE

Figure 7. 1 Endowment Market Value from 2004 to 2012

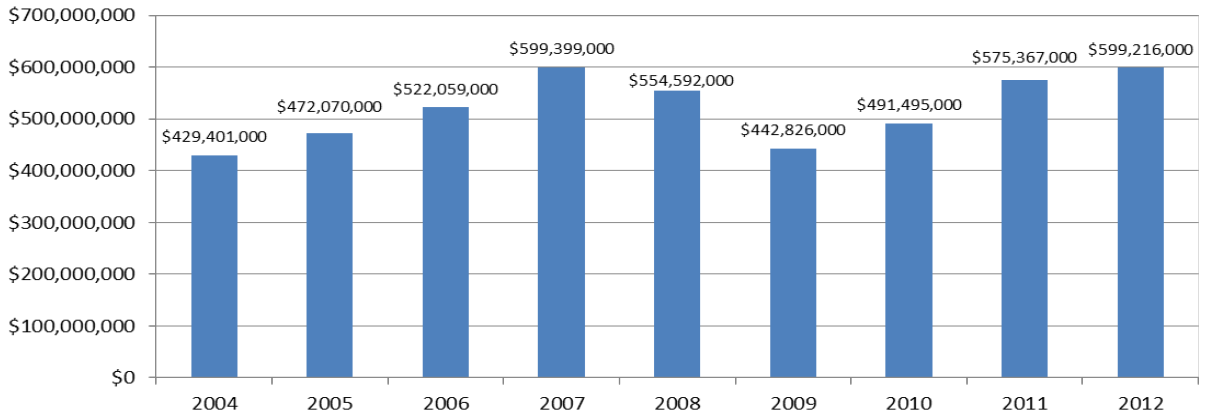
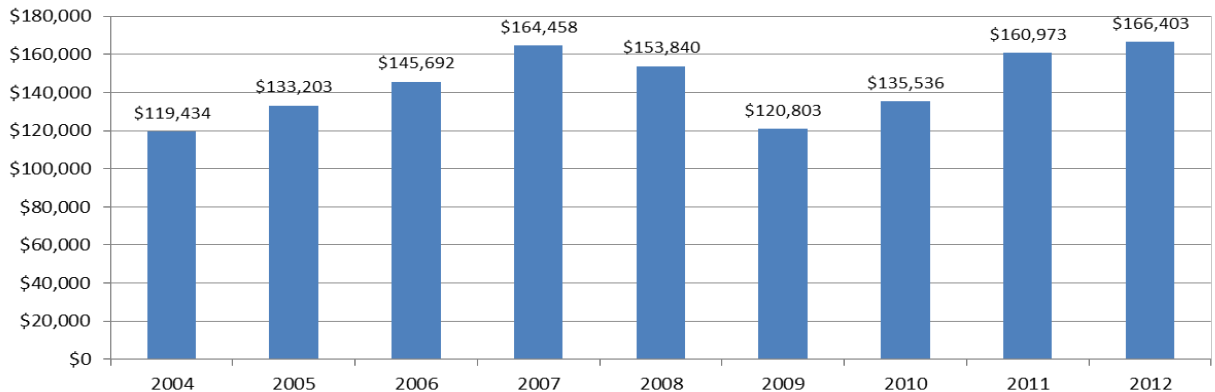


Figure 7. 2 Endowment Market Value per FTE Student from 2004 to 2012



Operating Revenues (in thousands)								
Year (as of June 30)	Gross Student Tuition and Fees	Net Students Tuition and Fees	Auxiliary Services	Private Gifts and Grants	Government Grants and Contracts	Investment Income	Other Income	Total Operating Revenues
2004	\$100,830	\$69,679	\$24,336	\$7,283	\$3,291	\$23,584	\$3,452	\$131,625
2005	\$106,830	\$74,778	\$25,884	\$7,968	\$3,374	\$24,224	\$3,452	\$139,680
2006	\$116,073	\$81,337	\$27,126	\$8,958	\$4,413	\$24,982	\$4,280	\$151,096
2007	\$124,941	\$87,833	\$28,753	\$9,411	\$3,092	\$27,402	\$3,756	\$160,247
2008	\$131,765	\$92,705	\$30,306	\$9,605	\$3,796	\$30,355	\$3,823	\$170,590
2009	\$139,538	\$97,969	\$32,054	\$10,184	\$4,249	\$29,364	\$4,394	\$178,214
2010	\$142,965	\$99,510	\$29,046	\$9,589	\$5,026	\$29,562	\$4,755	\$177,488
2011	\$147,845	\$103,120	\$29,991	\$11,034	\$4,795	\$29,974	\$5,586	\$184,500
2012	\$154,846	\$107,738	\$30,848	\$12,350	\$3,190	\$29,480	\$5,615	\$189,221

*Estimates from Audited Financial Report

Operating Expenses (in thousands)							
Year (as of June 30)	Instruction	Sponsored Research and other Programs	Academic Support	Student Services	Institutional Support	Auxiliary Services	Total Operating Expenses
2004	\$45,317	\$1,724	\$16,581	\$22,579	\$16,963	\$24,391	\$127,555
2005	\$46,984	\$2,074	\$16,916	\$24,860	\$18,716	\$26,849	\$136,399
2006	\$48,858	\$2,181	\$17,098	\$26,422	\$19,541	\$25,872	\$139,972
2007	\$52,755	\$2,058	\$18,127	\$28,203	\$23,078	\$27,349	\$151,570
2008	\$57,150	\$2,371	\$19,750	\$30,581	\$26,771	\$30,138	\$166,761
2009	\$61,089	\$2,924	\$21,134	\$30,084	\$27,778	\$30,601	\$173,610
2010	\$63,057	\$3,377	\$21,556	\$30,556	\$27,458	\$26,659	\$172,663
2011	\$63,981	\$3,454	\$21,824	\$30,891	\$26,882	\$25,820	\$172,852
2012	\$66,250	\$2,616	\$23,660	\$33,289	\$26,994	\$26,447	\$179,256

*Estimates from Audited Financial Report

Net Assets (in thousands)				
Year (as of June 30)	Unrestricted	Temporarily Restricted	Permanently Restricted	Total Net Assets
2004	\$285,835	\$191,017	\$145,113	\$621,965
2005	\$304,899	\$209,180	\$150,931	\$665,010
2006	\$326,136	\$233,114	\$158,588	\$717,838
2007	\$362,487	\$275,342	\$168,534	\$806,363
2008	\$346,161	\$250,316	\$175,735	\$772,212
2009	\$301,161	\$179,280	\$182,192	\$662,633
2010	\$323,221	\$202,398	\$192,557	\$718,176
2011	\$369,140	\$260,761	\$207,993	\$837,894
2012	\$357,717	\$233,869	\$217,372	\$808,958

Note: Estimates from Audited Financial Report

Financial Assistance for Undergraduates												
Year	Tuition Discount Rate	Federal Need Based Scholarships and Grants	State Need Based Scholarships and Grants	Institutional Need Based Scholarships and Grants	External Scholarships	Non-need Based Scholarships and Grants	Merit Athletic Awards	Average Need- based Award	Average Merit- based Award	Average Merit Athletic Award	Average % of Financial Need Met	Average Student Indebtedness at Graduation
2001-02	28.1%	\$1,500,000	\$1,600,000	\$24,280,508	\$900,000	NA	NA	\$18,072	NA	NA	100%	\$15,000
2002-03	29.4%	\$1,100,000	\$1,200,000	\$22,853,025	\$900,000	NA	NA	\$18,072	NA	NA	100%	\$16,000
2003-04	30.9%	\$1,504,600	\$1,045,400	\$23,990,000	\$900,000	\$61,000	\$50,000	\$19,000	\$6,777	\$10,000	100%	\$16,695
2004-05	30.0%	\$1,492,575	\$1,196,670	\$25,500,000	\$950,000	\$202,000	\$110,000	\$20,000	\$10,222	\$10,000	100%	\$16,800
2005-06	29.9%	\$1,545,300	\$1,208,750	\$27,000,000	\$980,000	\$400,000	\$180,000	\$21,000	\$12,356	\$10,000	100%	\$17,400
2006-07	29.7%	\$1,353,350	\$1,210,800	\$30,500,000	\$1,168,300	\$1,008,400	\$210,000	\$23,400	\$5,564	\$10,000	100%	\$17,500
2007-08	29.6%	\$1,479,565	\$1,174,300	\$32,000,000	\$1,400,000	\$1,588,542	\$210,000	\$23,400	\$12,681	\$10,000	100%	\$17,700
2008-09	29.8%	\$1,569,616	\$902,550	\$34,000,000	\$1,000,000	\$1,800,000	\$318,990	\$25,400	\$12,616	\$9,114	95%	\$18,500
2009-10	30.4%	\$2,154,381	\$839,111	\$37,000,000	\$1,000,000	\$1,965,154	\$449,000	\$25,500	\$11,907	\$9,304	95%	\$18,800
2010-11	30.3%	\$2,224,300	\$688,717	\$40,000,000	\$1,200,000	\$2,234,686	\$563,080	\$25,600	\$11,641	\$9,165	95%	\$18,900
2011-12	30.4%	\$1,749,455	\$733,931	\$42,000,000	\$1,163,000	\$2,500,000	\$691,080	\$26,000	\$12,855	\$9,173	95%	\$20,149
2012-13	NA	\$1,784,391	\$793,467	\$44,500,000	\$1,444,282	\$2,500,000	\$773,490	\$27,000	\$13,562	\$9,549	95%	\$21,163

Note: All information except Discount Rate are from Common Data Set.

Definitions

Definitions BUCKNELL UNIVERSITY

TERM	DEFINITION	DEFINITION SOURCE
Worksheet of Admission		
<i>First-year student</i>	A student who has completed less than the equivalent of 1 full year of undergraduate work; that is, less than 30 semester hours (in a 120-hour degree program) or less than 900 contact hours .	IPEDS
<i>SAT/ACT test score calculation</i>	SAT/ACT calculation is for ALL enrolled, degree/certificate-seeking, first-time (freshman) students who submitted test scores. If students submitted both SAT and ACT scores, but only SAT scores were considered for admission, only report the SAT scores (and vice versa).	IPEDS
<i>Transfer Student</i>	A student entering the institution for the first time but known to have previously attended a postsecondary institution at the same level (e.g., undergraduate). The student may transfer with or without credit.	Common Data Set
Worksheet of Enrollment		
<i>American Indian</i>	A person having origins in any of the original peoples of North and South America (including Central America) who maintains cultural identification through tribal affiliation or community attachment.	IPEDS
<i>Asian</i>	A person having origins in any of the original peoples of the Far East, Southeast Asia, or the Indian Subcontinent, including, for example, Cambodia, China, India, Japan, Korea, Malaysia, Pakistan, the Philippine Islands, Thailand, and Vietnam.	IPEDS
<i>Black</i>	A person having origins in any of the black racial groups of Africa.	IPEDS
<i>Degree Seeking</i>	Students enrolled in courses for credit and recognized by the institution as seeking a degree, certificate, or other formal award. High school students also enrolled in postsecondary courses for credit are not considered degree/certificate-seeking.	IPEDS
<i>First-Generation</i>	A student for whom neither parent completed a 4 year bachelor's degree or higher.	IR Office
<i>Full Time Students</i>	Courseloads and full-time status: The normal courseload is four course credits. All degree candidates, including seniors, are expected to be enrolled each semester as full-time students, carrying a minimum of 3.0 and a maximum of 4.75 course credits, regardless of the number of course credits previously earned or planned for the future.	IPEDS
<i>Full-Time Equivalent (FTE) of Students</i>	The full-time equivalent (FTE) of students is a single value providing a meaningful combination of full time and part time students. IPEDS data products currently have two calculations of FTE students, one using fall student headcounts and the other using 12-month instructional activity. Bucknell University is using the fall headcount calculation.	IPEDS
<i>Hispanic</i>	A person of Cuban, Mexican, Puerto Rican, South or Central American, or other Spanish culture or origin, regardless of race.	IPEDS
<i>Home of Origin</i>	Student's home of origin is Pennsylvania if he/she is U.S citizen and his/her Home State is PA ; Student's home of origin is other US State if he/she is U.S citizen and his/her Home State is other states; Student's home of origin is other country if he/she is not a U.S citizen.	IR Office
<i>Multi-race</i>	A person with more than one race.	IPEDS
<i>Native Hawaiian/ Pacific Islander</i>	A person having origins in any of the original peoples of Hawaii, Guam, Samoa, or other Pacific Islands.	IPEDS

continued

TERM	DEFINITION	DEFINITION SOURCE
<i>Nonresident Alien</i>	A person who is not a citizen or national of the United States and who is in this country on a visa or temporary basis and does not have the right to remain indefinitely.	IPEDS
<i>Percent of Non-Residents</i>	Percentage of the non-resident students out of the total students.	IR Office
<i>Percent of US Minority</i>	Percentage of the sum of Asian, Hispanic, Black, American Indian, Native Hawaiian/ Pacific Islander, and multi-race students out of the total students.	IR Office
<i>Race Unknown</i>	The category used to report students or employees whose race and ethnicity are not known.	IPEDS
<i>White</i>	A person having origins in any of the original peoples of Europe, the Middle East, or North Africa.	IPEDS

Worksheet of Student Success

<i>Graduation Rate</i>	The number of students entering the institution as full-time, first-time, degree/certificate-seeking undergraduate students in a particular year (cohort), as a percent of the number completing their program within 150 percent (6-year) of normal time to completion.	IPEDS
<i>Retention Rate</i>	A measure of the rate at which students persist in their educational program at an institution, expressed as a percentage. For four-year institutions, this is the percentage of first-time bachelors (or equivalent) degree-seeking undergraduates from the previous fall who are again enrolled in the current fall. For all other institutions this is the percentage of first-time degree/certificate-seeking students from the previous fall who either re-enrolled or successfully completed their program by the current fall.	IPEDS

Worksheet of Faculty & Staff

<i>Faculty</i>	Persons identified by the institution as such and typically those whose initial assignments are made for the purpose of conducting instruction, research or public service as a principal activity (or activities). They may hold academic rank titles of professor, associate professor, assistant professor, instructor, lecturer or the equivalent of any of those academic ranks. Faculty may also include the chancellor/president, provost, vice provosts, deans, directors or the equivalent, as well as associate deans, assistant deans and executive officers of academic departments (chairpersons, heads or the equivalent) if their principal activity is instruction combined with research and/or public service. The designation as "faculty" is separate from the activities to which they may be currently assigned. For example, a newly appointed president of an institution may also be appointed as a faculty member. Graduate, instruction, and research assistants are not included in this category.	IPEDS
<i>FTE Staff</i>	Full-time-equivalent (FTE) staff is calculated by summing the total number of full-time staff and adding one-third of the total number of part-time staff. Graduate assistants are not included.	IPEDS
<i>Full-Time staff</i>	As defined by the institution. The type of appointment at the snapshot date determines whether an employee is full time or part time. The employee's term of contract is not considered in making the determination of full or part time.	IPEDS
<i>Terminal Degree</i>	The highest earned degree in a discipline. In most cases, this is the doctorate (Ed.D., Ph.D., Doctor of Musical Arts, and Doctor of Jurisprudence). In the fine arts, the M.F.A. or Master's of Fine Arts degree is considered the highest appropriate degree.	IR Office

continued

TERM	DEFINITION	DEFINITION SOURCE
Worksheet of Finance		
<i>Endowment Funds</i>	Funds whose principal is nonexpendable (true endowment) and that are intended to be invested to provide earnings for institutional use. Also includes term endowments and funds functioning as endowment.	IPEDS
<i>Financial Aid</i>	Federal Work Study, grants, loans to students (government and/or private), assistant-ships, scholarships, fellowships, tuition waivers, tuition discounts, employer aid (tuition reimbursement) and other monies (other than from relatives/ friends) provided to students to meet expenses. This excludes loans to parents.	IPEDS
<i>Tuition</i>	The amount of money charged to students for instructional services. Tuition may be charged per term, per course, or per credit.	IPEDS
<i>Tuition Discount Rate</i>	Total financial aid awarded (does not include student loans nor student specific grant awards as determined by a government agency or third party) divided by total gross tuition and fees	IR Office
Bucknell Academic Colleges and Schools		
<i>College of Arts and Sciences</i>	Provides 47 majors. Courses are offered in the three traditional liberal arts divisions: humanities, social sciences, and natural sciences and mathematics.	Bucknell Academics
<i>College of Engineering</i>	Provides 8 majors: Biomedical Engineering, Chemical Engineering; Civil and Environmental Engineering; Computer Engineering; Computer Science and Engineering; Electrical Engineering; Mechanical Engineering; Management for Engineers	Bucknell Academics
<i>School of Management</i>	Provides 5 majors: Accounting and Financial Management; Global Management; Managing for Sustainability; Markets, Innovation and Design; Management for Engineers	Bucknell Academics
<i>Graduate Studies</i>	The College of Arts and Sciences graduate program leads to three degrees of Master of Arts (MART), Master of Science (MSCI), and Master in Education. The College of Engineering Graduate Program leads to five degrees of Master of Science in Chemical Engineering, Civil Engineering, Electrical Engineering, Environmental Engineering, and Mechanical Engineering.	Bucknell Academics
Bucknell Academic Colleges and Schools		
<i>College of Arts and Sciences</i>	Provides 47 majors. Courses are offered in the three traditional liberal arts divisions: humanities, social sciences, and natural sciences and mathematics.	Bucknell Academics
<i>College of Engineering</i>	Provides 8 majors: Biomedical Engineering, Chemical Engineering; Civil and Environmental Engineering; Computer Engineering; Computer Science and Engineering; Electrical Engineering; Mechanical Engineering; Management for Engineers	Bucknell Academics
<i>School of Management</i>	Provides 5 majors: Accounting and Financial Management; Global Management; Managing for Sustainability; Markets, Innovation and Design; Management for Engineers	Bucknell Academics
<i>Graduate Studies</i>	The College of Arts and Sciences graduate program leads to three degrees of Master of Arts (MART), Master of Science (MSCI), and Master in Education. The College of Engineering Graduate Program leads to five degrees of Master of Science in Chemical Engineering, Civil Engineering, Electrical Engineering, Environmental Engineering, and Mechanical Engineering.	Bucknell Academics

