

+

+

2019-20 FACT BOOK



Bucknell | Institutional
UNIVERSITY | Research & Planning

bucknell.edu



FACT BOOK 2019 - 20

Table of Contents

Introduction	1
Foreword	1
Mission of Bucknell University	2
Vision of Bucknell University.....	2
Brief History	3
Trustees	4
Senior Leadership Team.....	6
Academic Divisions	6
Accreditation.....	7
University Organizational Chart.....	8
Provost Area Organizational Chart.....	9
Admissions	11
Enrollment.....	19
Completions by Field of Study.....	31
Academics, Co-Curricular and Extracurricular Activities	35
Student Success.....	45
Faculty & Staff	51
Finance	61
Definitions.....	65



BUCKNELL UNIVERSITY FACT BOOK

FOREWORD

The Office of Institutional Research & Planning is pleased to present the 2019-2020 Bucknell University Fact Book. This book is intended as a single, comprehensive, readily accessible and accurate source of information about Bucknell University, and it provides answers to many commonly asked questions about our institution and the people who are part of it, including trends over time.

The 2019-2020 Fact Book reflects Bucknell's commitment to transparency and accountability, as well as our continuing effort to improve the quality and accessibility of information about our university to internal and external stakeholders. Given the increasing external demand for accurate and readily accessible information, as well as the internal shift in culture toward data-informed decision making at all levels of our institution, we continued to update the existing dashboards and created several new ones that complement the print edition of the Fact Book. The dashboards have added functionality, essentially allowing the stakeholders to conduct real-time analyses to answer specific questions, and it is our hope that they will make the information both more accessible and easier to use. Both the print Fact Book and the dashboards are available at <https://www.bucknell.edu/azdirectory/institutional-research-planning>.

As in the previous years, we would like to extend our sincere appreciation to all offices that contributed to the creation of the Fact Book by providing us with the requested data as well as sharing their expertise in other ways. We hope that you will find the Fact Book informative and useful. Please let us know if you have any comments or suggestions about how we could improve either the print version or the new dashboard edition in the future.

All the best,
Kevork Horissian

INSTITUTIONAL RESEARCH & PLANNING STAFF

Kevork Horissian, *Assistant Provost of Institutional Research & Assessment*

Rita Liu, *Associate Director of Institutional Research*

Laura Winger, *Reports Coordinator/Analyst*

Wei You, *Assessment Coordinator*



BY WAY
of
BUCKNELL

THE MISSION OF BUCKNELL UNIVERSITY

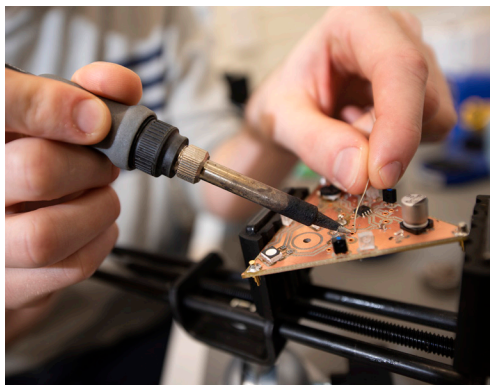
Bucknell is a unique national university where liberal arts and professional programs complement each other. Bucknell educates students for a lifetime of critical thinking and strong leadership characterized by continued intellectual exploration, creativity, and imagination. A Bucknell education enables students to interact daily with faculty who exemplify a passion for learning and a dedication to teaching and scholarship. Bucknell fosters a residential, co-curricular environment in which students develop intellectual maturity, personal conviction and strength of character, informed by a deep understanding of different cultures and diverse perspectives. Bucknell seeks to educate our students to serve the common good and to promote justice in ways sensitive to the moral and ethical dimensions of life.

Bucknell's rich history and heritage will influence its planning for the future. Bucknell's potential as an institution of higher learning extends beyond that of a traditional liberal arts college by virtue of its larger size and expansive programs. The University's broader spectrum of disciplines and courses of study within a diverse and active residential campus community enhance the quality of all aspects of the undergraduate experience, both in and out of the classroom.

THE VISION OF BUCKNELL UNIVERSITY

To provide students with the premier undergraduate experience in American higher education.

Bucknell will offer an academic program that is challenging and distinctive, with the capacity to prepare its graduates for successful personal, professional, and civic lives in the 21st century. Bucknell's residential life and co-curricular activities will fully support its academic program. This integrated environment for student learning and growth, enhanced by diversity in all its forms, will build connections to a global society. In doing so, Bucknell will emerge from a place of strength to a position of preeminence within American higher education.



A brief history of **BUCKNELL UNIVERSITY**

Bucknell University was founded in 1846 by a group of Baptists who deemed it “desirable that a Literary Institution should be established in Central Pennsylvania, embracing a High School for male pupils, another for females, a College and also a Theological Institution.”

The charter for the University at Lewisburg was granted by the Legislature of Pennsylvania and approved by the governor on Feb. 5, 1846. Classes were held in the basement of the First Baptist Church in Lewisburg.

In 1850, the University moved into Taylor Hall, the first building completed on campus, which housed both women and men’s studies until the opening of the Female Institute in 1852. The school’s first commencement was held Aug. 20, 1851, for a graduation class of seven men.

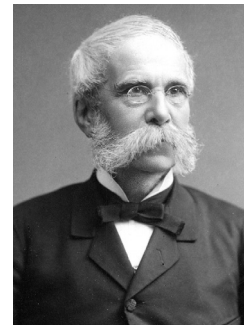
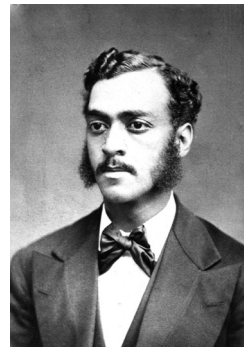
The Female Institute began instruction in 1852, with college courses being opened to women in 1883. The first woman graduate was Chella Scott, who received a bachelor’s degree with honors in 1885, and spoke at her commencement.

In 1875, Edward McKnight Brawley was Bucknell’s first African-American graduate, receiving a bachelor’s and master’s degree. He served as president of what became Selma University and Morris College, which he helped to found. Bucknell’s first international student was Maung Shaw Loo, who came from what is now called Myanmar as the first Burmese native to study in the United States; he graduated in 1864 and served many years as a physician in his home country.

The University at Lewisburg was renamed in 1886 in honor of William Bucknell, a charter member of the Board of Trustees and a major benefactor who challenged the board to match his donation. Mr. Bucknell also funded the University’s first scholarship, the first prizes for female students and the building of Commencement Hall, a chapel now named Bucknell Hall and home to the Stadler Center for Poetry.

Today, Bucknell is the nation’s largest private liberal arts university with 3,500 undergraduates on a 450-acre campus. As a highly selective private university, Bucknell offers a personalized and comprehensive liberal arts education to exceptionally talented students from across the U.S. and around the world. It offers academic programs in the arts, engineering, humanities, management, and social and natural sciences as well as the creative and performing arts; facilities for professional-grade instrumentation and spaces for digital and collaborative learning; and broad opportunities outside of class.

Bucknell University is now much more than a literary institution: It is a place that prepares students for success in an increasingly complex and interconnected global society.



TRUSTEES OF BUCKNELL UNIVERSITY, JULY 1, 2019

NAME	TERM EXPIRES (JUNE 30)	AFFILIATIONS
Christopher J. O'Brien '80 Chair, Board of Trustees Chair, Executive Committee	2022	President, O'Brien Capital Advisors
Stephen P. Holmes '79 Vice Chair, Board of Trustees Chair, Executive Resources Subcommittee Vice Chair, Human Resources Special Committee	2022	Chairman, Wyndham Hotels & Resorts & Wyndham Destinations
Harriet Edelman '77 Vice Chair, Board of Trustees	2021	Vice Chairman, Emigrant Savings Bank
Steven A. Kohn '81 Secretary, Board of Trustees	2020	President and Vice Chairman, Cushman and Wakefield Equity, Debt & Structured Finance
Dawn M. Becker '85 Vice Chair, Audit, Compliance & Risk Management committee	2021	EVP – General Counsel & Secretary, Federal Realty Investment Trust
John C. Bravman		President, Bucknell University
Juanita Ora Luckett Brown	2020	President, Brown Business Consulting, LLC
Robert A. Chrencik '73 Currently on Leave of Absence as Bucknell Trustee	2023	Former President and CEO, University of Maryland Medical Center
Laureen R. Costa '90	2023	Managing Director, Private Equity Group
Frank A. Davis '82	2024	President and CEO, Horizon Services Corporation
Lisa Cadette Detwiler Vice Chair, Student Life Committee	2022	Realtor, The Corcoran Group
Annie Seibold Drapeau '88 Chair, Human Resources Special Committee Vice Chair, Executive Resources Subcommittee	2024	Toast, Inc.
Brenda Earl '81 Vice Chair, Investments Committee	2024	Principal, Earl Investments
Jane Taylor Elfers '83 Chair, Nominating & Governance Committee	2023	President and CEO, The Children's Place, Inc.
Michael E. Flowers '76 Chair, Audit, Compliance & Risk Management Committee	2022	Attorney, Steptoe & Johnson, PLLC
Makoto Fujimura '83	2020	Director, Fuller Theological Seminary Brehm Center for Worship, Theology & Arts

TRUSTEES OF BUCKNELL UNIVERSITY, JULY 1, 2019

NAME	TERM EXPIRES (JUNE 30)	AFFILIATIONS
Robert J. Gilligan '81 Chair, Finance Committee	2021	Former VP of Transmission & Distribution, General Electric Company
Eugene A. Gorab '85 Chair, Investments Committee	2021	President and CEO, Greenfield Partners LLC
Sunil Gulati '81	2022	Lecturer, Columbia University; Former President, U.S. Soccer Federation
Marlene A. Hurd '79	2021	Former VP, Managing Director, Relationship Management, Fidelity Investments
Donald N. Isken '75	2022	Partner, Morris, Nichols, Arsht & Tunnell LLP
Alexandra Ahrens Jung '92	2024	Senior Advisor, Oak Hill Advisors
Kathleen M. LaPoint Chair, Advancement Committee	2020	Former Board of Trustees, Fundraiser, Simmons College
Bridget LaCroix Lecky	2024	Vice President, Man Investments, Inc.
Jordy H. Leiser	2024	Co-Founder and CEO, STELLAService
David Maurrasse Chair, Academic Affairs Committee	2024	President & Founder, Marga, Inc.
William B. Morrow, Jr. '70	2020	Former Managing Director and COO, Mid Europa Partners, LLP
Scott A. Perricelli Vice Chair, Advancement Committee	2024	Partner, LLR Partners Incorporated
John T. Reynolds '92 Vice Chair, Finance Committee	2022	Co-Founder & Managing Director, Lime Rock Partners
Frank Schoeneman '76	2021	Chairman and CEO, Empire Education Group
Kirsten Schubauer Heinemann '81	2022	Former Assistant Director of Admissions, Friends Academy
Erika N.D. Stanat '90 Vice Chair, Academic Affairs Committee	2024	Partner – Harter, Secrest & Emery, LLP
Christopher B. Sullivan '92	2023	Chairman and CEO, Primus Technologies Corporation
Garry D. Thaniel '04	2023	Global Head, GS1, CNCTKicks
David J. West '85	2023	Partner, Centerview Capital Holdings
Robin G. Zafirovski '79 Chair, Student Life Committee	2024	Former Financial Analyst, GE Capital

SENIOR LEADERSHIP TEAM

John Bravman, *President*

Elisabeth Mermann-Jozwiak, *Provost*

Raquel Alexander, *Dean of the Freeman College of Management*

Amy Badal, *Dean of Students*

Param Bedi, *Vice President for Library & Information Technology*

Heather Johns, *Interim Chief of Communications* (concludes 12/31/19)

Gail Glover, *Vice President for Communications* (effect. 1/1/20)

Bill Conley, *Vice President for Enrollment Management*

Pierre Joanis, *Vice President for Human Resources and Chief Human Resources Officer*

Carol M. Kennedy, *Executive Director of the President's Office and University Secretary*

Pat Mather, *Dean of the College of Engineering*

Robert Midkiff, *Vice President for Strategic Initiatives*

Ken Ogawa, *Associate Vice President for Facilities & Sustainability*

Karin Rilley, *General Counsel*

Scott Rosevear, *Vice President for University Advancement*

David J. Surgala, *Vice President for Finance & Administration*

Jermaine Truax, *Director of Athletics & Recreation*

Karl Voss, *Dean of the College of Arts & Sciences*

ACADEMIC DIVISIONS

The College of Arts & Sciences

The College of Arts & Sciences has 2,332 degree seeking undergraduate students and 290 full-time faculty members. The College of Arts & Sciences offers programs of study leading to four degrees: the Bachelor of Arts, the Bachelor of Science, the Bachelor of Science in Education, and the Bachelor of Music. The programs are designed to carry out the educational objectives of the University through courses in the arts and humanities, the social sciences, the natural sciences and mathematics.

The Freeman College of Management

The Freeman College of Management comprises 571 degree seeking undergraduate students and 29 full-time faculty. The College of Management at Bucknell University offers innovative professional education in the context of one of the nation's leading liberal arts universities. A Bucknell education, combining technical skills and deep intellectual exploration, is preparation for thoughtful and capable leaders. In the classroom, students have the opportunity to follow their passions and develop expertise in sustainable commerce, innovative design thinking, global leadership, and accounting & financial management. The College of Management offers programs of study leading to the degree of Bachelor of Science in Business Administration.

The College of Engineering

The College of Engineering comprises 705 degree seeking undergraduate students and 71 full-time faculty. The College of Engineering is dedicated to providing outstanding educational opportunities in engineering to a predominantly undergraduate student body of talented men and women. The faculty and courses are organized in six distinct departments: Biomedical Engineering, Chemical Engineering, Civic and Environmental Engineering, Computer Science, Electrical & Computer Engineering, and Mechanical Engineering.

Graduate Studies

Bucknell offers three different master's degrees across seven different programs in the College of Arts & Sciences, and masters of Science degrees in five programs in the College of Engineering. The role of graduate education is to provide "a deepening of the student's knowledge and experience base in the discipline by building on the increased commitment that graduate students bring to their work."



ACCREDITATION

Middle States Accreditation

Bucknell was first accredited by the Middle States in 1921. In 2014, Bucknell University completed its decennial reaccreditation with the Middle States Commission on Higher Education. The institution is fully accredited until 2024.

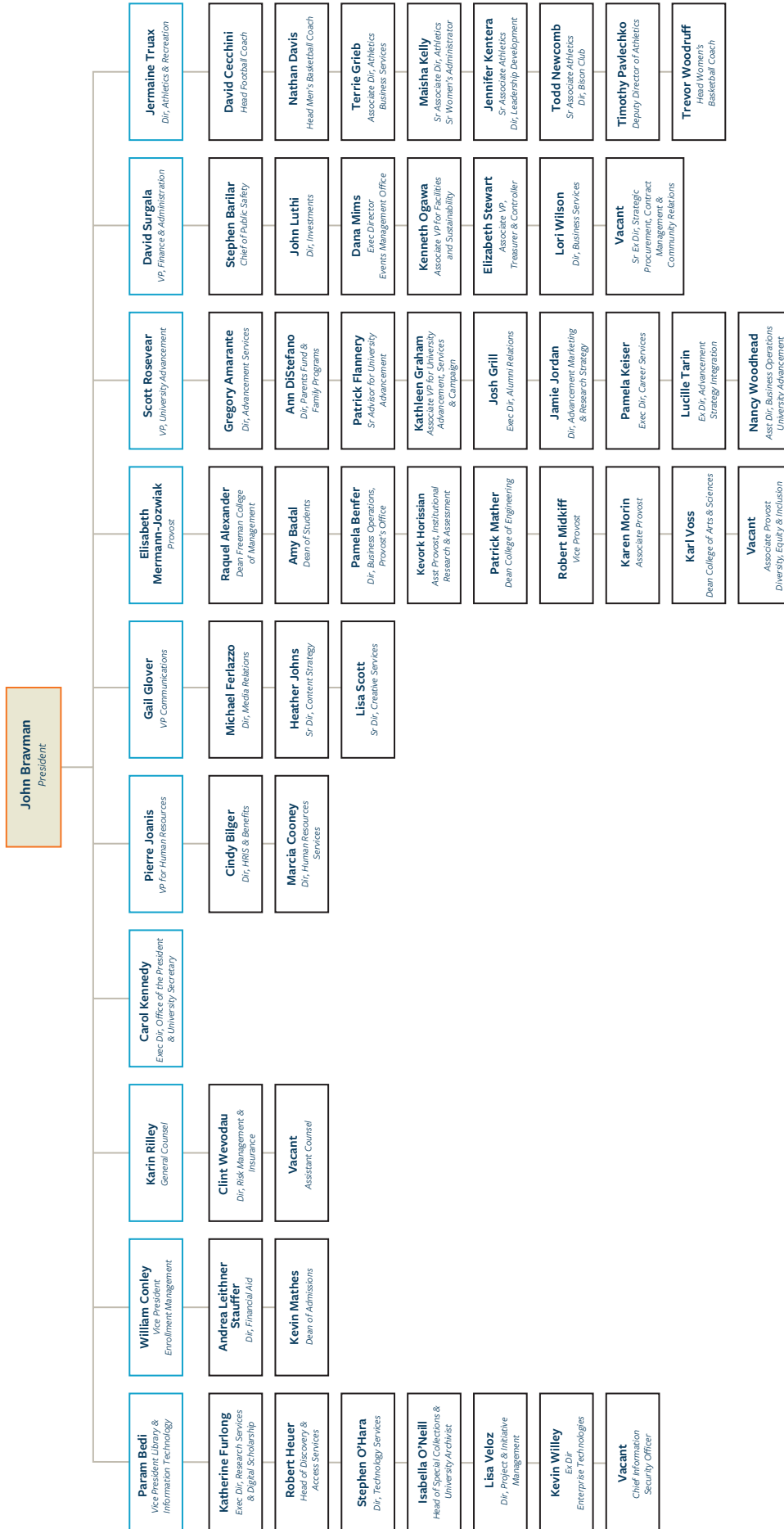
Specialized Programmatic Accreditation and Licensure

- **AACSB International** – The Association for the Advancement of Collegiate Schools of Business. Less than 5% of the world’s 13,000 business programs have earned AACSB Accreditation.
- **ABET** - the Accrediting Board for Engineering and Technology, accredits the programs within the College of Engineering.
- **ACS** - the American Chemical Society is an industry-wide agency that certifies programs within the Department of Chemistry.
- **CSAB** - the Computer Science Accreditation Board, accredits the Bachelor of Science degree within the College of Arts & Sciences.
- **NASM** - the National Association of Schools of Music, accredits degree programs within the Department of Music.
- **NCAA** - the National Collegiate Athletic Association, conducts periodic certification reviews of Bucknell’s athletic programs.
- **The Pennsylvania Department of Education** oversees teaching certification within the Department of Education.



BUCKNELL UNIVERSITY

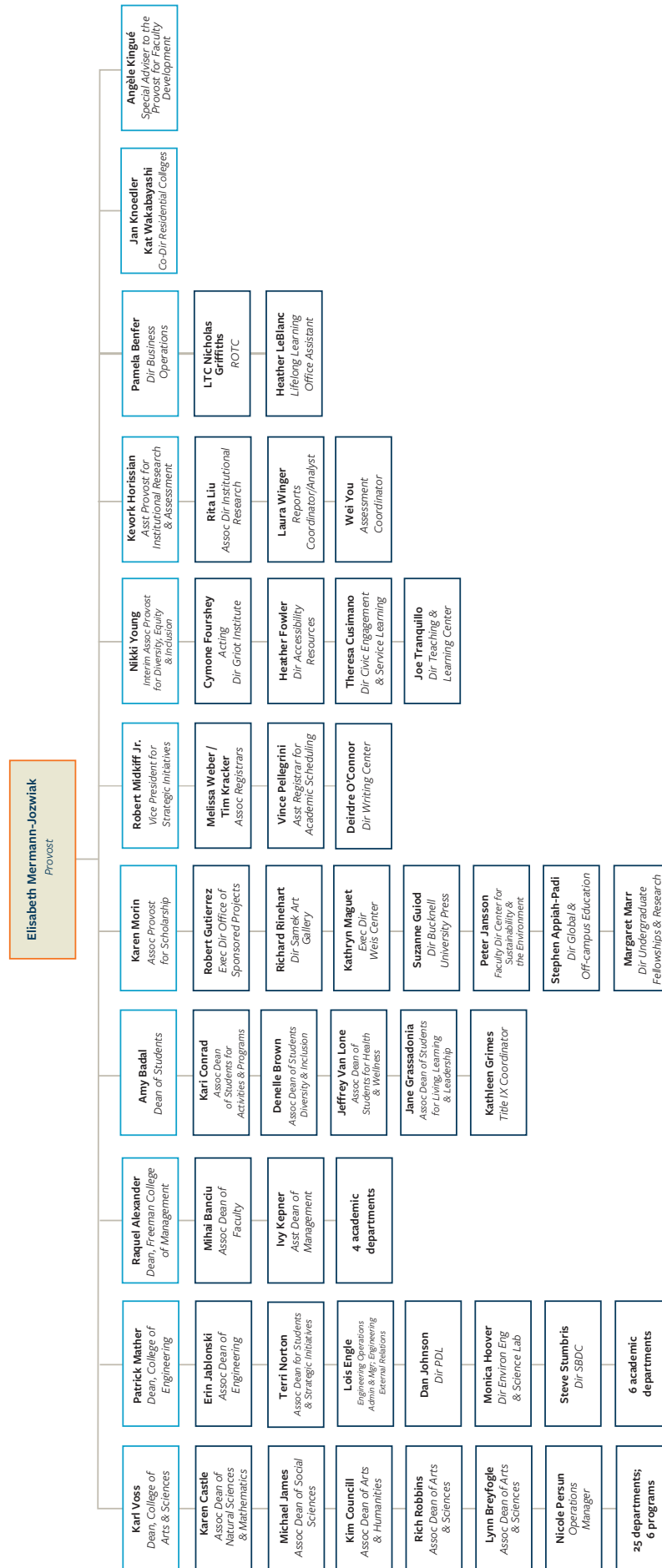
Organizational Chart



Updated: June, 2019

PROVOST AREA

Organizational Chart



Updated: October 30, 2019

ADMISSIONS

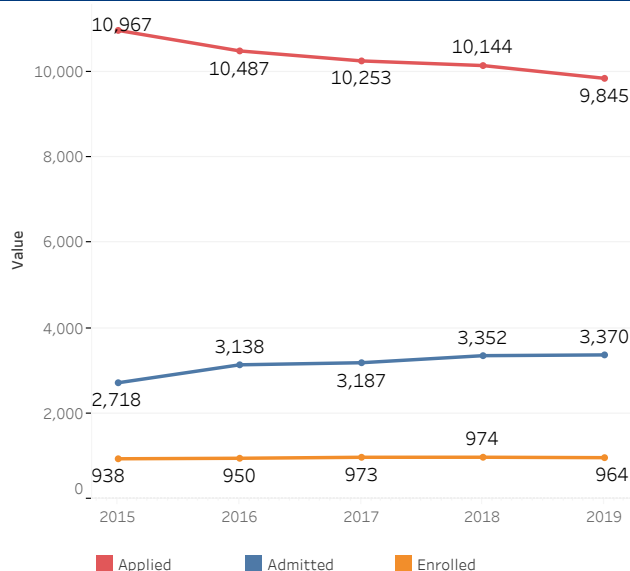
ADMISSIONS BUCKNELL UNIVERSITY

All Undergraduate Colleges
All

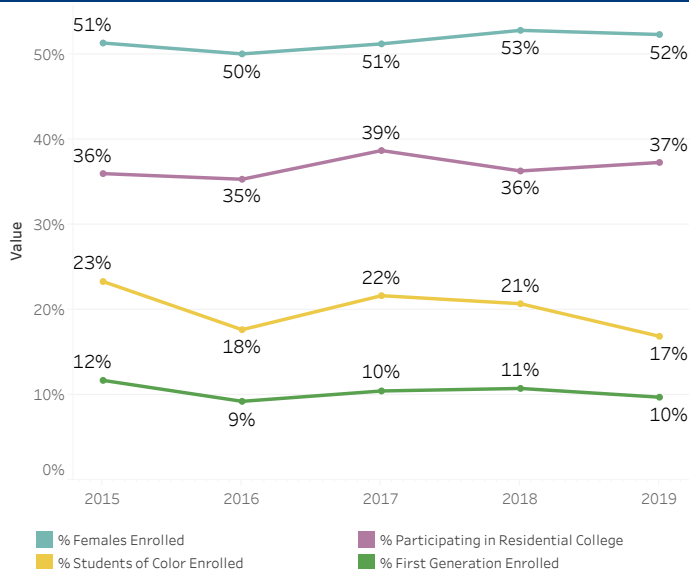
First-Year Undergraduate Admissions

	Applied	Admitted	Acceptance Rate	Enrolled	Yield	% Females Enrolled	% Students of Color Enrolled	% Participating in Residential College	% First Generation Enrolled
2015	10,967	2,718	24.8%	938	34.5%	51.4%	23.3%	36.0%	11.7%
2016	10,487	3,138	29.9%	950	30.3%	50.1%	17.7%	35.4%	9.3%
2017	10,253	3,187	31.1%	973	30.5%	51.3%	21.7%	38.7%	10.5%
2018	10,144	3,352	33.0%	974	29.1%	52.9%	20.7%	36.3%	10.8%
2019	9,845	3,370	34.2%	964	28.6%	52.4%	16.9%	37.3%	9.8%

First-Year Undergraduate Admissions Trends



First-Year Undergraduates Enrollment by Students' Demographics and Residential College Participation



Average SAT, ACT, and High School GPA for Entering First-Year Students (The 2017 -2019 SAT scores are based on the redesigned SAT test)

	2015	2016	2017	2018	2019
Avg. SAT Verbal/SAT Evidence Based Reading & Writing_2017,2018, 2019	635	629	657	657	658
Avg. SAT Math	664	663	675	680	682
Avg. SAT Total	1,299	1,292	1,332	1,336	1,340
Avg. SAT Writing	636	637			
Avg. ACT Total Score	29.7	29.9	29.5	30.0	29.9
Avg. HSGPA	3.54	3.52	3.55	3.56	3.58

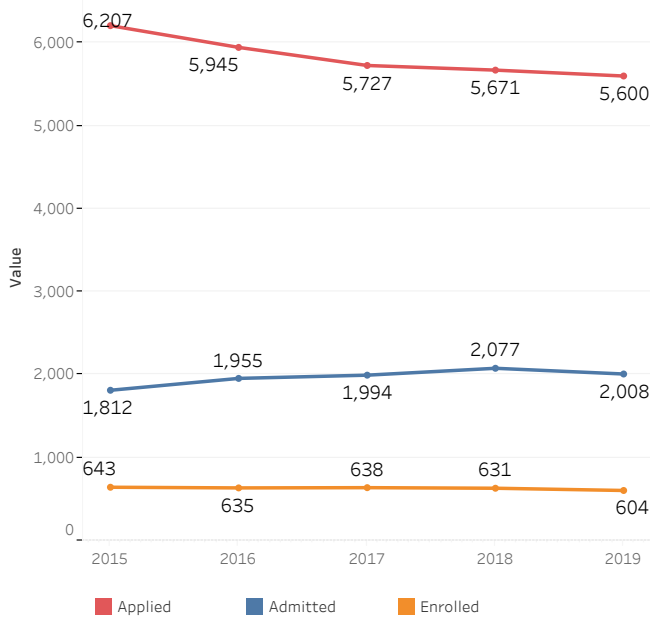
Percentile Scores of SAT, ACT, and High School GPA for Entering First-Year Students (The 2017 -2019 SAT scores are based on the redesigned SAT test)

	2015	2016	2017	2018	2019
Percentile (25) of SAT Verbal	590	590	620	620	620
Percentile (75) of SAT Verbal	680	670	700	690	700
Percentile (25) of SAT Math	620	610	630	630	640
Percentile (75) of SAT Math	705	710	720	730	730
Percentile (25) of SAT Total	1,230	1,220	1,260	1,260	1,280
Percentile (75) of SAT Total	1,380	1,380	1,410	1,420	1,410
Percentile (25) of SAT Writing	590	590			
Percentile (75) of SAT Writing	690	690			
Percentile (25) of ACT Total Score	28	28	28	28	28
Percentile (75) of ACT Total Score	32	32	31	32	32
Percentile (25) of HSGPA	3.29	3.29	3.33	3.35	3.37
Percentile (75) of HSGPA	3.82	3.79	3.80	3.83	3.82

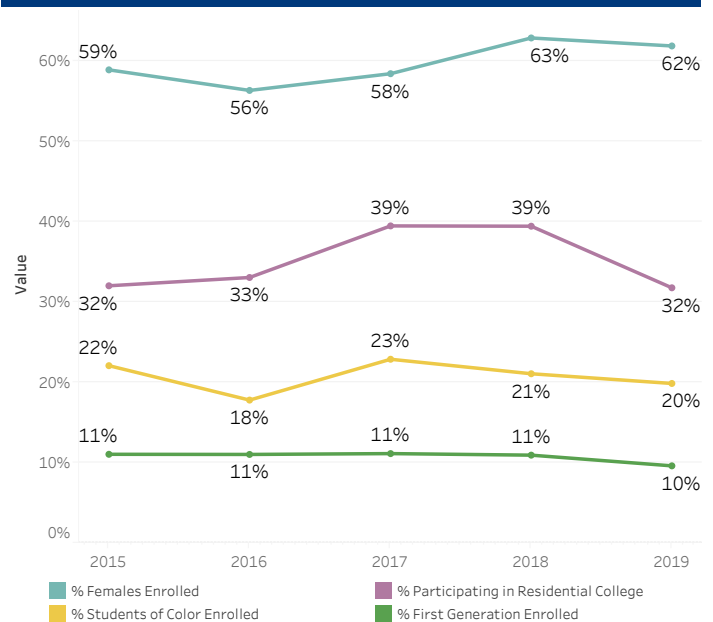
First-Year Undergraduate Admissions_A&S

	Applied	Admitted	Acceptance Rate	Enrolled	Yield	% Females Enrolled	% Students of Color Enrolled	% Participating in Residential College	% First Generation Enrolled
2015	6,207	1,812	29.2%	643	35.5%	58.9%	22.1%	32.0%	11.0%
2016	5,945	1,955	32.9%	635	32.5%	56.4%	17.8%	33.1%	11.0%
2017	5,727	1,994	34.8%	638	32.0%	58.5%	22.9%	39.5%	11.1%
2018	5,671	2,077	36.6%	631	30.4%	62.9%	21.1%	39.5%	10.9%
2019	5,600	2,008	35.9%	604	30.1%	61.9%	19.9%	31.8%	9.6%

First-Year Undergraduate Admissions Trends_A&S



First-Year Undergraduates Enrollment by Students' Demographics and Residential College Participation_A&S



Average SAT, ACT, and High School GPA for Entering First-Year Students_A&S (The 2017 -2019 SAT scores are based on the redesigned SAT test)

	2015	2016	2017	2018	2019
Avg. SAT Verbal/SAT Evidence Based Reading & Writing_2017,2018, 2019	634	624	651	651	651
Avg. SAT Math	649	649	660	664	665
Avg. SAT Total	1,283	1,273	1,311	1,315	1,316
Avg. SAT Writing	638	633			
Avg. ACT Total Score	29.3	29.5	29.0	29.6	29.3
Avg. HSGPA	3.49	3.48	3.51	3.53	3.54

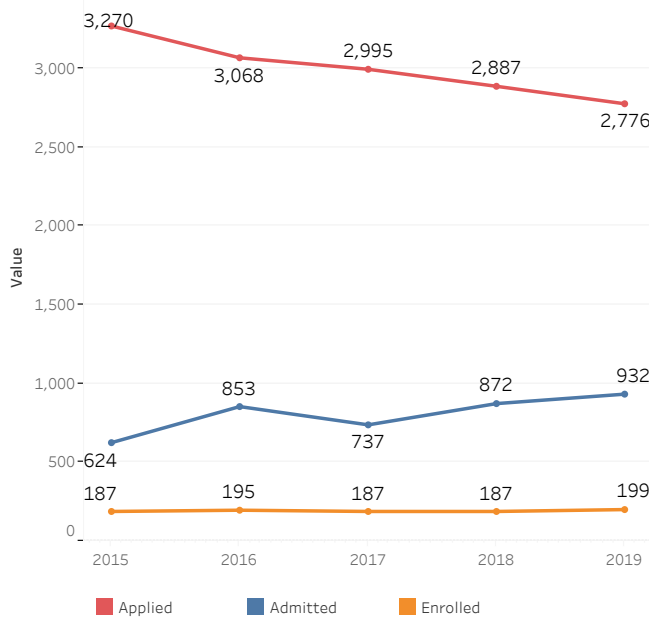
Percentile Scores of SAT, ACT, and High School GPA for Entering First-Year Students_A&S (The 2017 -2019 SAT scores are based on the redesigned SAT test)

	2015	2016	2017	2018	2019
Percentile (25) of SAT Verbal	583	580	610	610	620
Percentile (75) of SAT Verbal	680	670	700	690	690
Percentile (25) of SAT Math	610	600	600	610	610
Percentile (75) of SAT Math	690	700	710	720	710
Percentile (25) of SAT Total	1,210	1,180	1,230	1,240	1,250
Percentile (75) of SAT Total	1,360	1,360	1,400	1,400	1,390
Percentile (25) of SAT Writing	590	590			
Percentile (75) of SAT Writing	690	690			
Percentile (25) of ACT Total Score	28	28	27	28	28
Percentile (75) of ACT Total Score	31	31	31	32	31
Percentile (25) of HSGPA	3.26	3.26	3.29	3.31	3.31
Percentile (75) of HSGPA	3.75	3.75	3.78	3.81	3.80

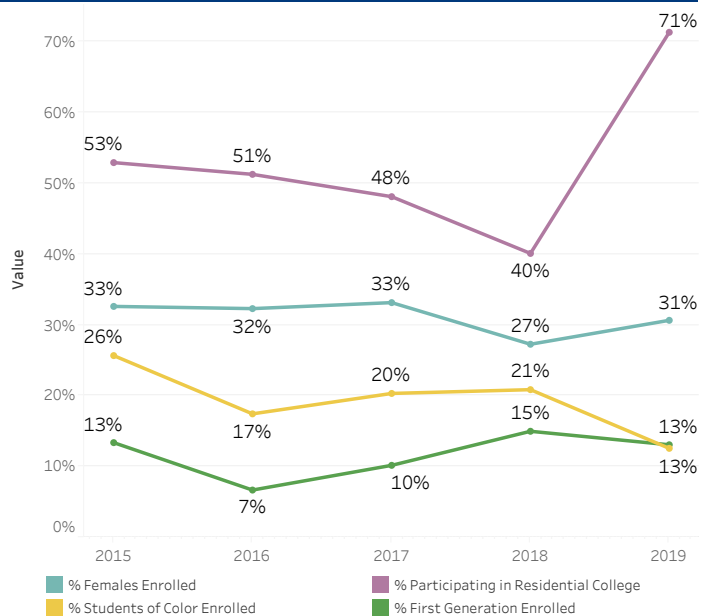
First-Year Undergraduate Admissions_Engineering

	Applied	Admitted	Acceptance Rate	Enrolled	Yield	% Females Enrolled	% Students of Color Enrolled	% Participating in Residential College	% First Generation Enrolled
2015	3,270	624	19.1%	187	30.0%	32.6%	25.7%	52.9%	13.4%
2016	3,068	853	27.8%	195	22.9%	32.3%	17.4%	51.3%	6.7%
2017	2,995	737	24.6%	187	25.4%	33.2%	20.3%	48.1%	10.2%
2018	2,887	872	30.2%	187	21.4%	27.3%	20.9%	40.1%	15.0%
2019	2,776	932	33.6%	199	21.4%	30.7%	12.6%	71.4%	13.1%

First-Year Undergraduate Admissions Trends_Engineering



First-Year Undergraduates Enrollment by Students' Demographics and Residential College Participation_Engineering



Average SAT, ACT, and High School GPA for Entering First-Year Students_Engineering (The 2017 -2019 SAT scores are based on the redesigned SAT test)

	2015	2016	2017	2018	2019
Avg. SAT Verbal/SAT Evidence Based Reading & Writing_2017,2018, 2019	644	653	669	670	669
Avg. SAT Math	709	710	715	728	719
Avg. SAT Total	1,353	1,363	1,381	1,398	1,388
Avg. SAT Writing	634	648			
Avg. ACT Total Score	31.0	31.0	31.2	31.0	31.9
Avg. HSGPA	3.70	3.64	3.66	3.68	3.70

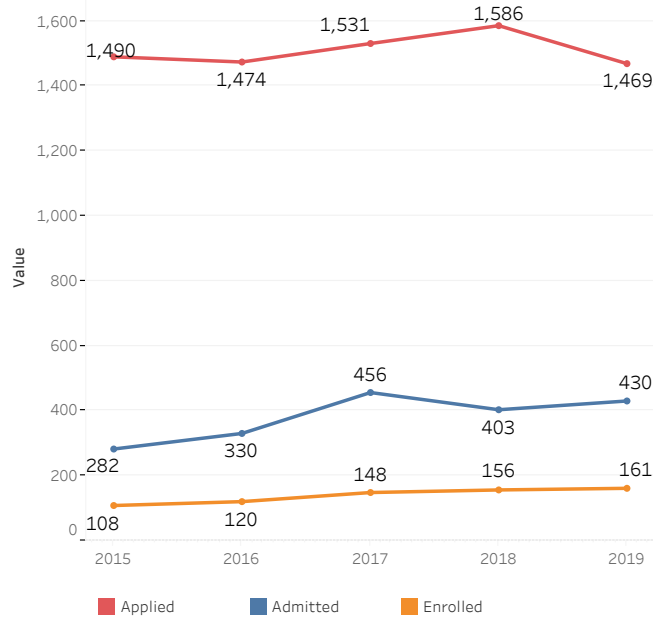
Percentile Scores of SAT, ACT, and High School GPA for Entering First-Year Students_Engineering (The 2017 -2019 SAT scores are based on the redesigned SAT test)

	2015	2016	2017	2018	2019
Percentile (25) of SAT Verbal	600	600	620	640	640
Percentile (75) of SAT Verbal	680	700	713	710	710
Percentile (25) of SAT Math	670	670	680	700	680
Percentile (75) of SAT Math	750	760	760	770	760
Percentile (25) of SAT Total	1,290	1,318	1,310	1,350	1,320
Percentile (75) of SAT Total	1,420	1,420	1,450	1,460	1,460
Percentile (25) of SAT Writing	595	610			
Percentile (75) of SAT Writing	670	690			
Percentile (25) of ACT Total Score	30	29	30	29	31
Percentile (75) of ACT Total Score	33	33	33	33	34
Percentile (25) of HSGPA	3.48	3.45	3.50	3.52	3.55
Percentile (75) of HSGPA	3.94	3.88	3.89	3.93	3.91

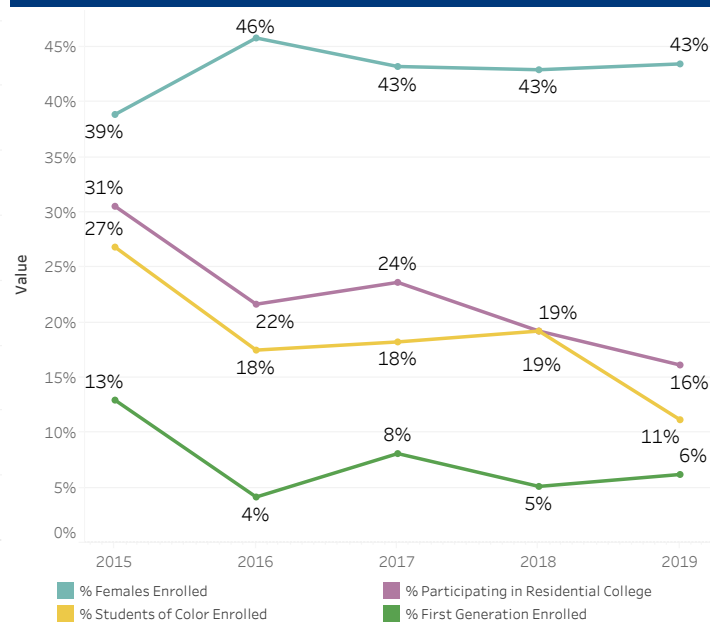
First-Year Undergraduate Admissions_Management

	Applied	Admitted	Acceptance Rate	Enrolled	Yield	% Females Enrolled	% Students of Color Enrolled	% Participating in Residential College	% First Generation Enrolled
2015	1,490	282	18.9%	108	38.3%	38.9%	26.9%	30.6%	13.0%
2016	1,474	330	22.4%	120	36.4%	45.8%	17.5%	21.7%	4.2%
2017	1,531	456	29.8%	148	32.5%	43.2%	18.2%	23.6%	8.1%
2018	1,586	403	25.4%	156	38.7%	42.9%	19.2%	19.2%	5.1%
2019	1,469	430	29.3%	161	37.4%	43.5%	11.2%	16.1%	6.2%

First-Year Undergraduate Admissions Trends_Management



First-Year Undergraduates Enrollment by Students' Demographics and Residential College Participation_Management



Average SAT, ACT, and High School GPA for Entering First-Year Students_Management (The 2017 -2019 SAT scores are based on the redesigned SAT test)

	2015	2016	2017	2018	2019
Avg. SAT Verbal/SAT Evidence Based Reading & Writing_2017,2018, 2019	627	623	667	662	669
Avg. SAT Math	666	669	686	679	694
Avg. SAT Total	1,293	1,292	1,353	1,342	1,363
Avg. SAT Writing	632	641			
Avg. ACT Total Score	30.3	30.4	29.9	30.4	30.1
Avg. HSGPA	3.52	3.54	3.54	3.55	3.54

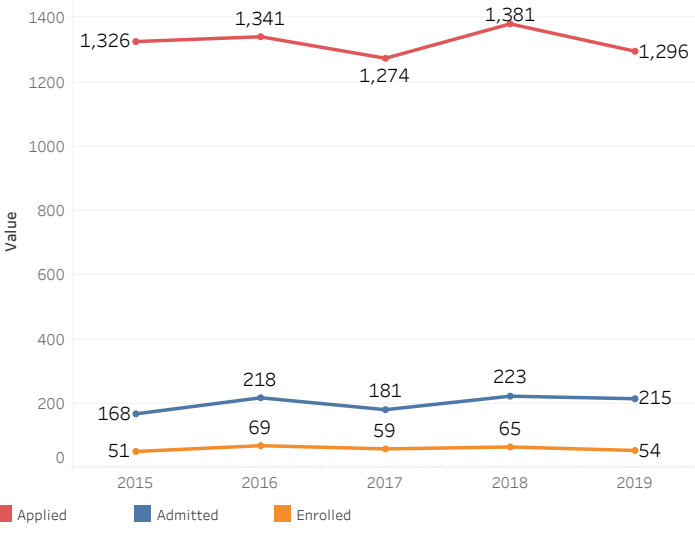
Percentile Scores of SAT, ACT, and High School GPA for Entering First-Year Students_Management (The 2017 -2019 SAT scores are based on the redesigned SAT test)

	2015	2016	2017	2018	2019
Percentile (25) of SAT Verbal	580	583	630	630	630
Percentile (75) of SAT Verbal	678	670	700	690	700
Percentile (25) of SAT Math	630	630	650	660	660
Percentile (75) of SAT Math	700	710	720	710	740
Percentile (25) of SAT Total	1,233	1,230	1,300	1,290	1,315
Percentile (75) of SAT Total	1,370	1,360	1,400	1,400	1,415
Percentile (25) of SAT Writing	590	593			
Percentile (75) of SAT Writing	680	690			
Percentile (25) of ACT Total Score	29	29	29	29	29
Percentile (75) of ACT Total Score	32	32	32	32	32
Percentile (25) of HSGPA	3.30	3.29	3.35	3.40	3.37
Percentile (75) of HSGPA	3.74	3.77	3.75	3.73	3.73

First-Year Admissions Statistics International Students

	Applied	Admitted	Acceptance Rate	Enrolled	Yield
2015	1,326	168	12.7%	51	30.4%
2016	1,341	218	16.3%	69	31.7%
2017	1,274	181	14.2%	59	32.6%
2018	1,381	223	16.1%	65	29.1%
2019	1,296	215	16.6%	54	25.1%

First-Year Admissions Statistics International Students

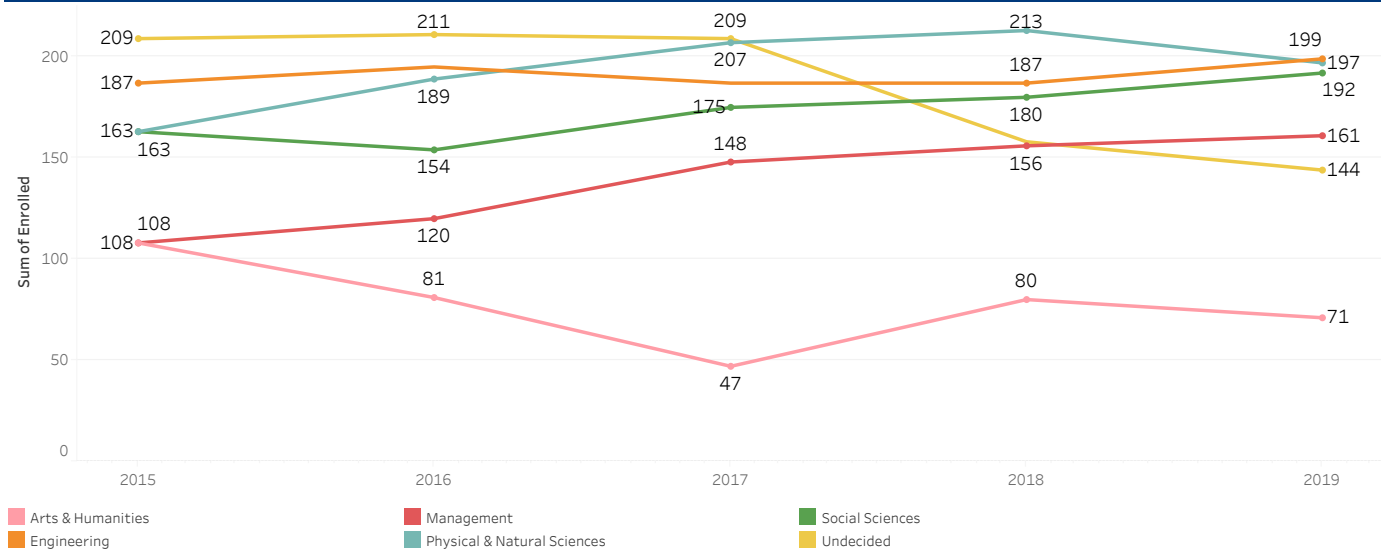


First-Year Admissions by Academic Area of Interest

(Interdisciplinary studies: Economics & Mathematics was coded as Social Sciences before 2015 and was coded under Natural Sciences after 2015)

	2015			2016			2017			2018			2019		
	Applied	Admitted	Enrolled	Applied	Admitted	Enrolled	Applied	Admitted	Enrolled	Applied	Admitted	Enrolled	Applied	Admitted	Enrolled
Arts & Humanities	698	333	108	648	300	81	396	191	47	691	328	80	653	301	71
Engineering	3,270	624	187	3,068	853	195	2,995	737	187	2,887	872	187	2,776	932	199
Management	1,490	282	108	1,474	330	120	1,531	456	148	1,586	403	156	1,469	430	161
Physical & Natural Sciences	2,428	604	163	2,498	795	189	2,388	875	207	2,363	897	213	2,374	809	197
Social Sciences	1,667	444	163	1,544	413	154	1,564	469	175	1,604	514	180	1,673	575	192
Undecided	1,414	431	209	1,255	447	211	1,379	459	209	1,013	338	158	900	323	144
Grand Total	10,967	2,718	938	10,487	3,138	950	10,253	3,187	973	10,144	3,352	974	9,845	3,370	964

First-Year Undergraduate Enrollment by Academic Area of Interest

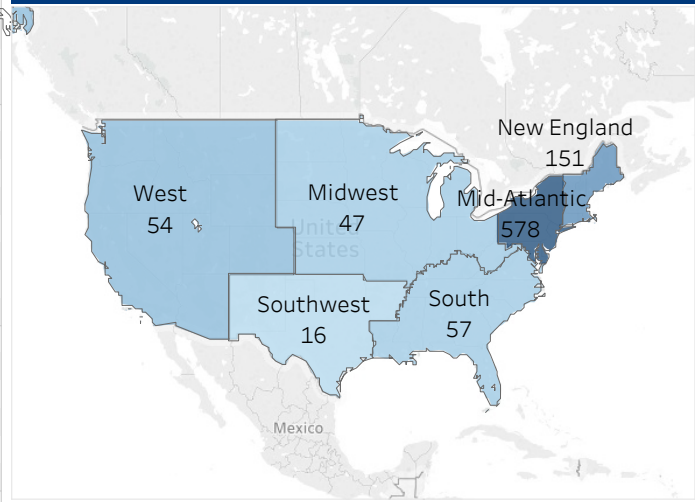


First-Year Undergraduate Enrollment by Region and State

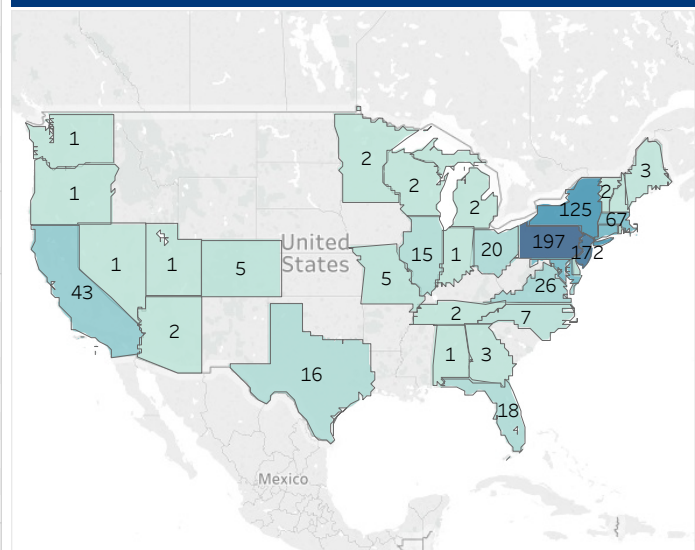
		Year				
		2015	2016	2017	2018	2019
Mid-Atlantic	D.C.	3	6	6	8	6
	Delaware	1	3	3	5	6
	Maryland	50	52	65	55	72
	New Jersey	186	186	170	179	172
	New York	142	154	134	158	125
	Pennsylvania	182	150	190	191	197
Midwest	Illinois	16	20	18	17	15
	Indiana		3	2	2	1
	Iowa	1				
	Michigan	4	2	1	5	2
	Minnesota	4	2	3	4	2
	Missouri	3	3	1		5
	Ohio	10	13	13	12	20
	Wisconsin	1	2	2	2	2
	New England	Connecticut	75	77	78	80
Maine		5	6	7	1	3
Massachusetts		69	60	70	62	67
New Hampshire			4	9	1	2
Rhode Island		1	5	5	6	4
Vermont		4	1	4	5	2
South	Alabama		1		1	1
	Florida	12	11	15	9	18
	Georgia	4	6	3	12	3
	Kentucky		2	4	2	
	Louisiana		1	1		
	North Carolina	7	8	11	10	7
	South Carolina	3	2			
	Tennessee	3				2
	Virginia	23	25	27	18	26
Southwest	Arkansas		1			
	New Mexico	1				
West	Texas	5	10	11	17	16
	Arizona	2	2	2		2
	California	54	45	53	34	43
	Colorado	7	5	6	5	5
	Hawaii			1		
	Idaho	1	1		1	
	Nevada	2	1			1
	Oregon	2	4	1	2	1
	Utah				1	1
	Washington	1	5	2	2	1
Grand Total		884	879	918	907	903

2019 Admissions

2019 First-Year Undergraduate Enrollment by U.S. Geographic Region



2019 First-Year Undergraduate Enrollment by U.S. State



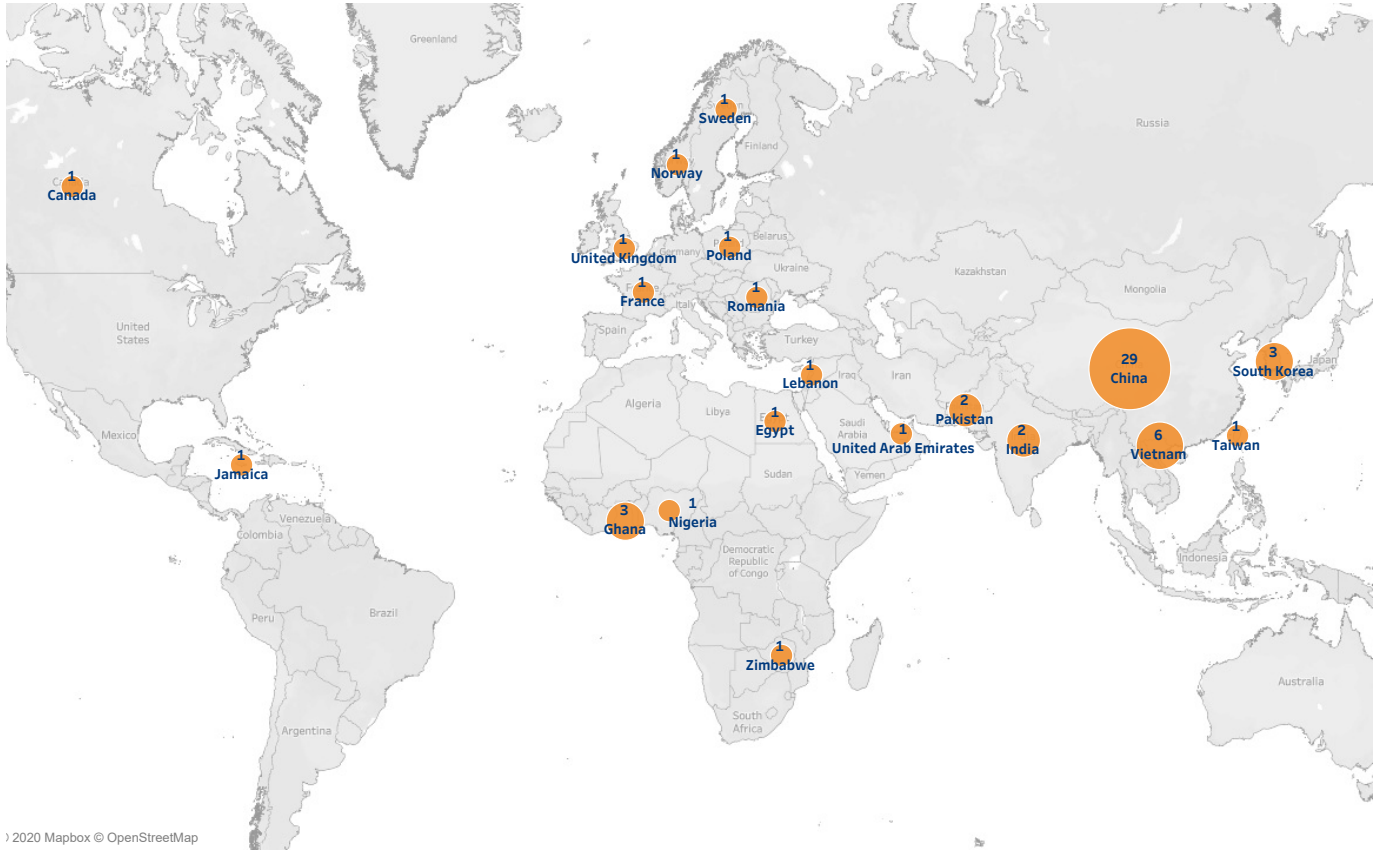
Graduate School Admissions

Year	Applied	Admitted	Acceptance Rate	Enrolled	Yield	% Females Enrolled	% Students of Color Enrolled	Mean UG GPA
2015	87	29	33%	18	62%	39%	25%	3.40
2016	88	29	33%	21	72%	52%	10%	3.45
2017	73	37	51%	21	57%	57%	14%	3.36
2018	77	37	48%	21	57%	57%	0%	3.44
2019	80	32	40%	20	63%	57%	5%	3.37

Undergraduate Transfers Admissions

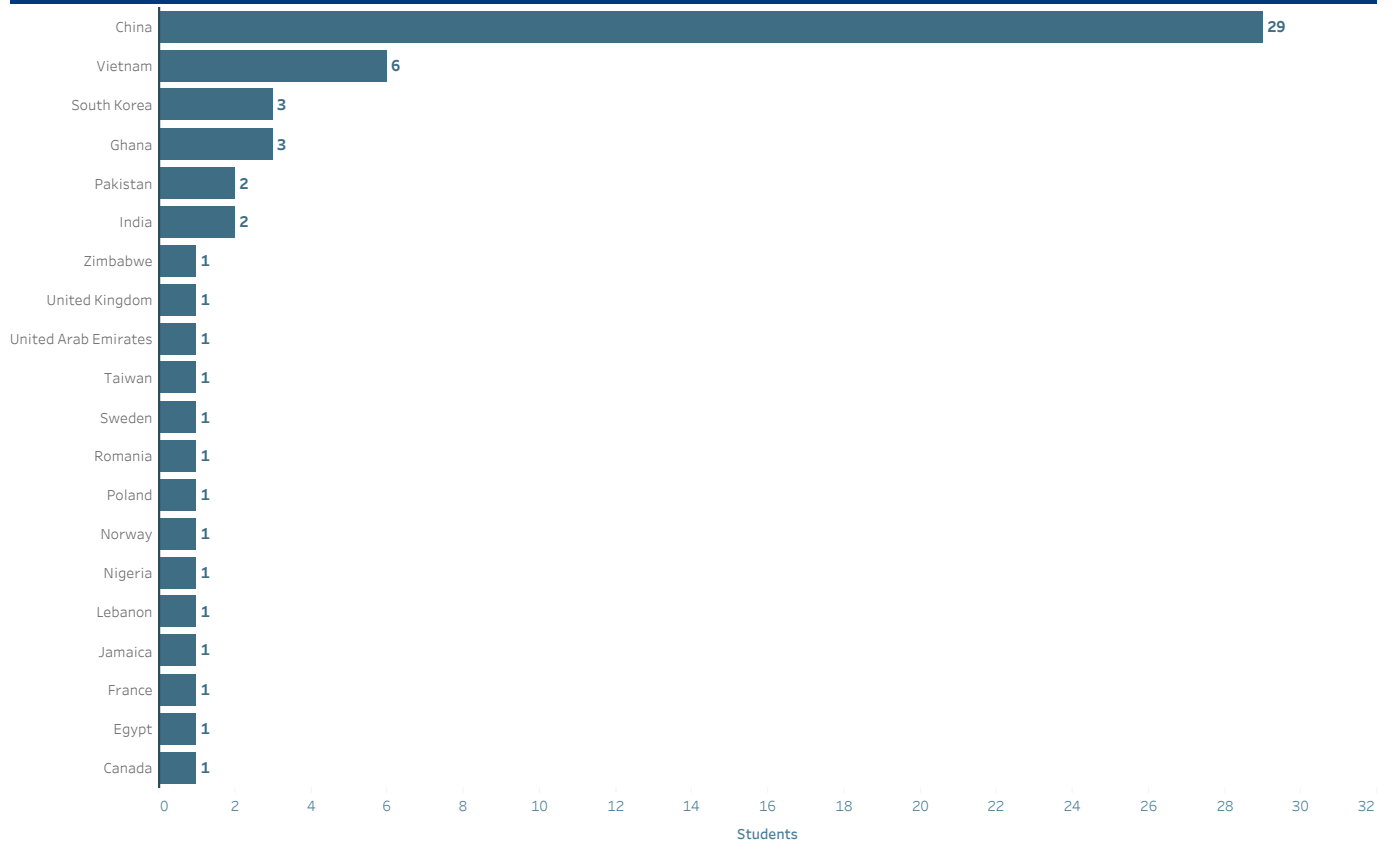
Year	Applied	Admitted	Acceptance Rate	Enrolled	Yield	% Female Enrolled	% Students of Color Enrolled
2015	207	48	23.2%	23	47.9%	56.5%	39.1%
2016	183	71	38.8%	25	35.2%	28.0%	12.0%
2017	257	75	29.2%	29	38.7%	41.4%	37.9%
2018	207	45	21.7%	24	53.3%	41.7%	29.2%
2019	238	76	31.9%	25	32.9%	48.0%	16.0%

2019 First-Year Undergraduate Enrollment by Global Geographic (United States is Excluded)



© 2020 Mapbox © OpenStreetMap

2019 First-year Undergraduate Enrollment by Global Nations (United States is Excluded)



ENROLLMENT

ENROLLMENT BUCKNELL UNIVERSITY

10 Year Enrollment History (as of fall of stated year)

Undergraduate Enrollment

Year	First-Year Undergrad	Transfer Undergrad	FT Undergrad	PT Undergrad	Total Undergrad	Undergrad FTE
2010	929	36	3,488	20	3,508	3,495
2011	916	28	3,530	24	3,554	3,538
2012	915	28	3,512	21	3,533	3,519
2013	933	28	3,504	28	3,532	3,513
2014	939	30	3,538	27	3,565	3,547
2015	938	23	3,533	36	3,569	3,545
2016	950	25	3,530	41	3,571	3,544
2017	973	29	3,585	26	3,611	3,594
2018	974	24	3,581	16	3,597	3,586
2019	964	25	3,606	21	3,627	3,613

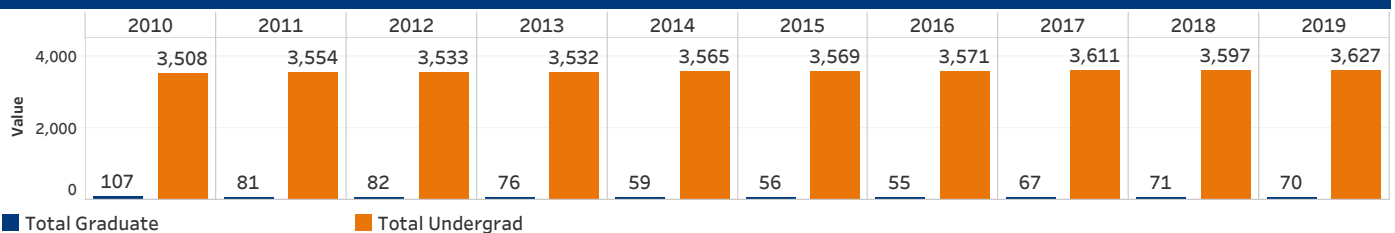
Graduate Enrollment

Year	First-Year Graduate	Transfer Graduates	Total FT Graduate	Total PT Graduate	Total Graduate	Graduate FTE
2010	13		66	41	107	80
2011	16		54	27	81	63
2012	26		54	28	82	63
2013	12		51	25	76	59
2014	12		43	16	59	48
2015	5		44	12	56	48
2016	22		39	16	55	44
2017	21		43	24	67	51
2018	21		40	31	71	50
2019	18		37	33	70	48

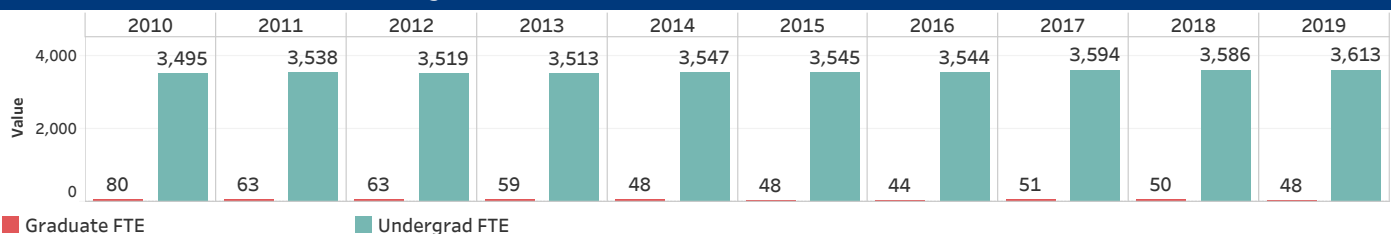
Total Enrollment (* FTE total may not sum up by undergraduate FTE and graduate FTE due to rounding)

Year	First-Year Total	Transfer Total	FT Enrollment Total	PT Enrollment Total	University Headcount Total	FTE Total*
2010	942	36	3,554	61	3,615	3,574
2011	932	28	3,584	51	3,635	3,601
2012	941	28	3,566	49	3,615	3,582
2013	945	28	3,555	53	3,608	3,573
2014	951	30	3,581	43	3,624	3,595
2015	943	23	3,577	48	3,625	3,593
2016	972	25	3,569	57	3,626	3,588
2017	994	29	3,628	50	3,678	3,645
2018	995	24	3,621	47	3,668	3,637
2019	982	25	3,643	54	3,697	3,661

Undergraduate and Graduate Enrollment 10-Year Trends



Undergraduate and Graduate FTE Enrollment 10-Year Trends



All Colleges and Graduate Studies

All

Enrollment Diversity for Degree-Seeking Students

	Undergrad		Graduate	
2019	3,608		41	
	Undergrad	Graduate	Undergrad	Graduate
Female	1,841	26	51%	63%
Male	1,767	15	49%	37%
	Undergrad	Graduate	Undergrad	Graduate
American Indian/Alaska	2	1	0%	2%
Asian	179	1	5%	2%
Black/African American	123		3%	
Hawaiian/PacificIsland	1		0%	
Hispanic/Latino	235		7%	
Multiple Races	150		4%	
Non-Resident Alien	228	4	6%	10%
Unknown	5	8	0%	20%
White	2,685	27	74%	66%
	Undergrad	Graduate	Undergrad	Graduate
Unknown		12		29%
Non-Resident Alien	228	4	6%	10%
Resident Alien	45		1%	
US Citizen	3,154	25	87%	61%
US/Foreign National	181		5%	
	Undergrad	Graduate	Undergrad	Graduate
Pennsylvania	718	26	20%	63%
Other U.S. State	2,637	11	73%	27%
Other Countries	253	4	7%	10%
	Undergrad	Graduate	Undergrad	Graduate
PELL Recipients	317		9%	0%
	Undergrad	Graduate	Undergrad	Graduate
First Generation	367	4	10%	10%

Enrollment by Class and Gender for All Enrolled Students

	2019		Grand Total
	Female	Male	
First-year	505	461	966
Sophomore	492	429	921
Junior	409	417	826
Senior	431	452	883
Special	12	8	20
4th Year of 5-Year Engineer	3	8	11
Graduate	27	17	44
Non-degree	17	9	26
Grand Total	1,896	1,801	3,697

Enrollment Diversity for Degree-Seeking Students_A&S

		Undergrad	
2019		2,332	
	Undergrad		Undergrad
Female	1,367	Female	59%
Male	965	Male	41%
	Undergrad		Undergrad
American Indian/Alaska	1	American Indian/Alaska	0%
Asian	104	Asian	4%
Black/African American	97	Black/African American	4%
Hispanic/Latino	170	Hispanic/Latino	7%
Multiple Races	114	Multiple Races	5%
Non-Resident Alien	138	Non-Resident Alien	6%
Unknown	2	Unknown	0%
White	1,706	White	73%
	Undergrad		Undergrad
Non-Resident Alien	138	Non-Resident Alien	6%
Resident Alien	24	Resident Alien	1%
US Citizen	2,041	US Citizen	88%
US/Foreign National	129	US/Foreign National	6%
	Undergrad		Undergrad
Pennsylvania	459	Pennsylvania	20%
Other U.S. State	1,719	Other U.S. State	74%
Other Countries	154	Other Countries	7%
	Undergrad		Undergrad
PELL Recipients	209		9%
	Undergrad		Undergrad
First Generation	256		11%

Enrollment by Class and Gender for All Enrolled Students_A&S

	2019		Grand Total
	Female	Male	
First-year	374	231	605
Sophomore	372	226	598
Junior	307	232	539
Senior	313	276	589
Special	12	8	20
Grand Total	1,378	973	2,351

Engineering

College of Engineering

Enrollment Diversity for Degree-Seeking Students_Engineering

Undergrad			
2019	705		
	Undergrad		Undergrad
Female	222	Female	31%
Male	483	Male	69%
	Undergrad		Undergrad
Asian	42	Asian	6%
Black/African American	11	Black/African American	2%
Hawaiian/PacificIsland	1	Hawaiian/PacificIsland	0%
Hispanic/Latino	36	Hispanic/Latino	5%
Multiple Races	21	Multiple Races	3%
Non-Resident Alien	72	Non-Resident Alien	10%
Unknown	2	Unknown	0%
White	520	White	74%
	Undergrad		Undergrad
Non-Resident Alien	72	Non-Resident Alien	10%
Resident Alien	15	Resident Alien	2%
US Citizen	585	US Citizen	83%
US/Foreign National	33	US/Foreign National	5%
	Undergrad		Undergrad
Pennsylvania	167	Pennsylvania	24%
Other U.S. State	458	Other U.S. State	65%
Other Countries	80	Other Countries	11%
	Undergrad		Undergrad
PELL Recipients	64		9%
	Undergrad		Undergrad
First Generation	75		11%

Enrollment by Class and Gender for All Enrolled Students_Engineering

	2019		Grand Total
	Female	Male	
First-year	61	137	198
Sophomore	56	118	174
Junior	49	107	156
Senior	53	113	166
4th Year of 5-Year Engineer	3	8	11
Grand Total	222	483	705

Management

Freeman College of Management

Enrollment Diversity for Degree-Seeking Students_Management

Undergrad			
2019		571	
	Undergrad		Undergrad
Female	252	Female	44%
Male	319	Male	56%
	Undergrad		Undergrad
American Indian/Alaska	1	American Indian/Alaska	0%
Asian	33	Asian	6%
Black/African American	15	Black/African American	3%
Hispanic/Latino	29	Hispanic/Latino	5%
Multiple Races	15	Multiple Races	3%
Non-Resident Alien	18	Non-Resident Alien	3%
Unknown	1	Unknown	0%
White	459	White	80%
	Undergrad		Undergrad
Non-Resident Alien	18	Non-Resident Alien	3%
Resident Alien	6	Resident Alien	1%
US Citizen	528	US Citizen	92%
US/Foreign National	19	US/Foreign National	3%
	Undergrad		Undergrad
Pennsylvania	92	Pennsylvania	16%
Other U.S. State	460	Other U.S. State	81%
Other Countries	19	Other Countries	3%
	Undergrad		Undergrad
PELL Recipients	44		8%
	Undergrad		Undergrad
First Generation	36		6%

Enrollment by Class and Gender for All Enrolled Students_Management

	2019		Grand Total
	Female	Male	
First-year	70	93	163
Sophomore	64	85	149
Junior	53	78	131
Senior	65	63	128
Grand Total	252	319	571

Graduate

Graduate Studies

Enrollment Diversity for Degree-Seeking Students_Graduate

Graduate			
2019	41		
	Graduate		Graduate
Female	26	Female	63%
Male	15	Male	37%
	Graduate		Graduate
American Indian/Alaska	1	American Indian/Alaska	2%
Asian	1	Asian	2%
Non-Resident Alien	4	Non-Resident Alien	10%
Unknown	8	Unknown	20%
White	27	White	66%
	Graduate		Graduate
Unknown	12	Unknown	29%
Non-Resident Alien	4	Non-Resident Alien	10%
US Citizen	25	US Citizen	61%
	Graduate		Graduate
Pennsylvania	26	Pennsylvania	63%
Other U.S. State	11	Other U.S. State	27%
Other Countries	4	Other Countries	10%
	Graduate		Graduate
First Generation	4		10%

Enrollment by Class and Gender for All Enrolled Students_Graduate

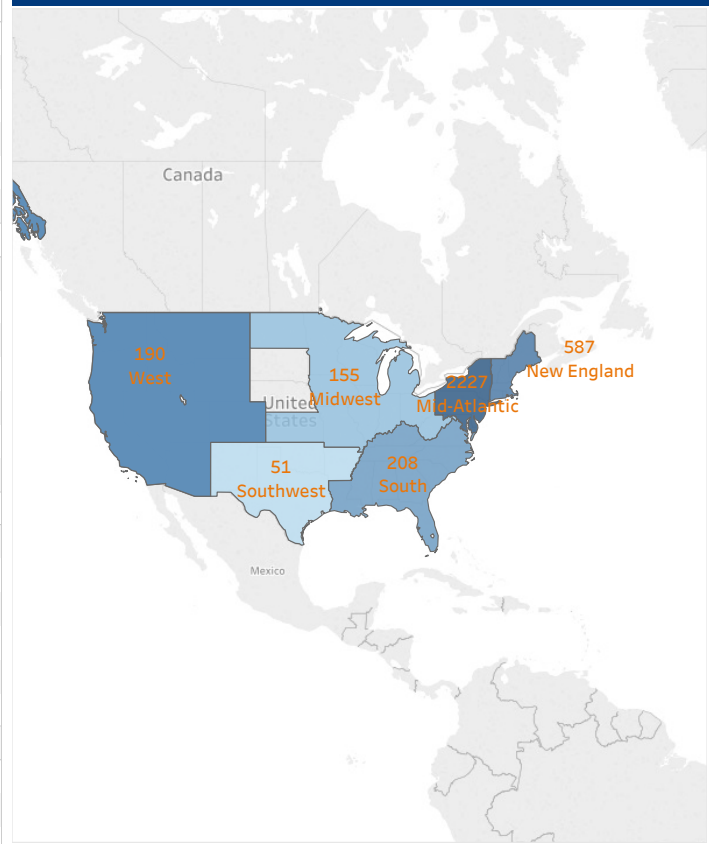
	2019		Grand Total
	Female	Male	
Graduate	27	17	44
Non-degree	17	9	26
Grand Total	44	26	70

Student Enrollment By U.S. Region and State, 2019

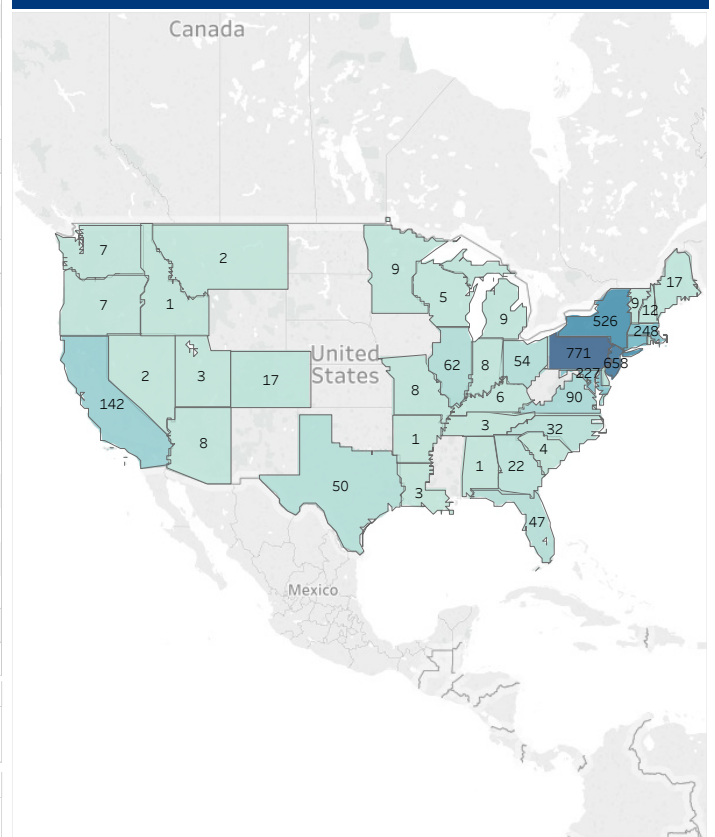
(Non-resident Aliens who had U.S. addresses are counted by U.S. region too)

	Undergrad	Graduate	Total
Mid-Atlantic			
D.C.	28		28
Delaware	17		17
Maryland	226	1	227
New Jersey	656	2	658
New York	526		526
Pennsylvania	728	43	771
Total	2,181	46	2,227
Midwest			
Illinois	62		62
Indiana	8		8
Michigan	9		9
Minnesota	9		9
Missouri	8		8
Ohio	53	1	54
Wisconsin	5		5
Total	154	1	155
New England			
Connecticut	283	1	284
Maine	17		17
Massachusetts	246	2	248
New Hampshire	12		12
Rhode Island	17		17
Vermont	9		9
Total	584	3	587
South			
Alabama	1		1
Florida	47		47
Georgia	22		22
Kentucky	6		6
Louisiana	2	1	3
North Carolina	32		32
South Carolina	4		4
Tennessee	3		3
Virginia	88	2	90
Total	205	3	208
Southwest			
Arkansas	1		1
Texas	50		50
Total	51		51
West			
Arizona	8		8
California	142		142
Colorado	17		17
Hawaii	1		1
Idaho	1		1
Montana	1	1	2
Nevada	2		2
Oregon	7		7
Utah	3		3
Washington	7		7
Total	189	1	190
Total with U.S. Address	3,364	54	3,418
	Undergrad	Graduate	Total
Non-Resident Alien	235	16	251
	Undergrad	Graduate	Total
2019	3,627	70	3,697

Geographic Origins of Enrolled Undergraduate and Graduate Students, by U.S. Region, 2019



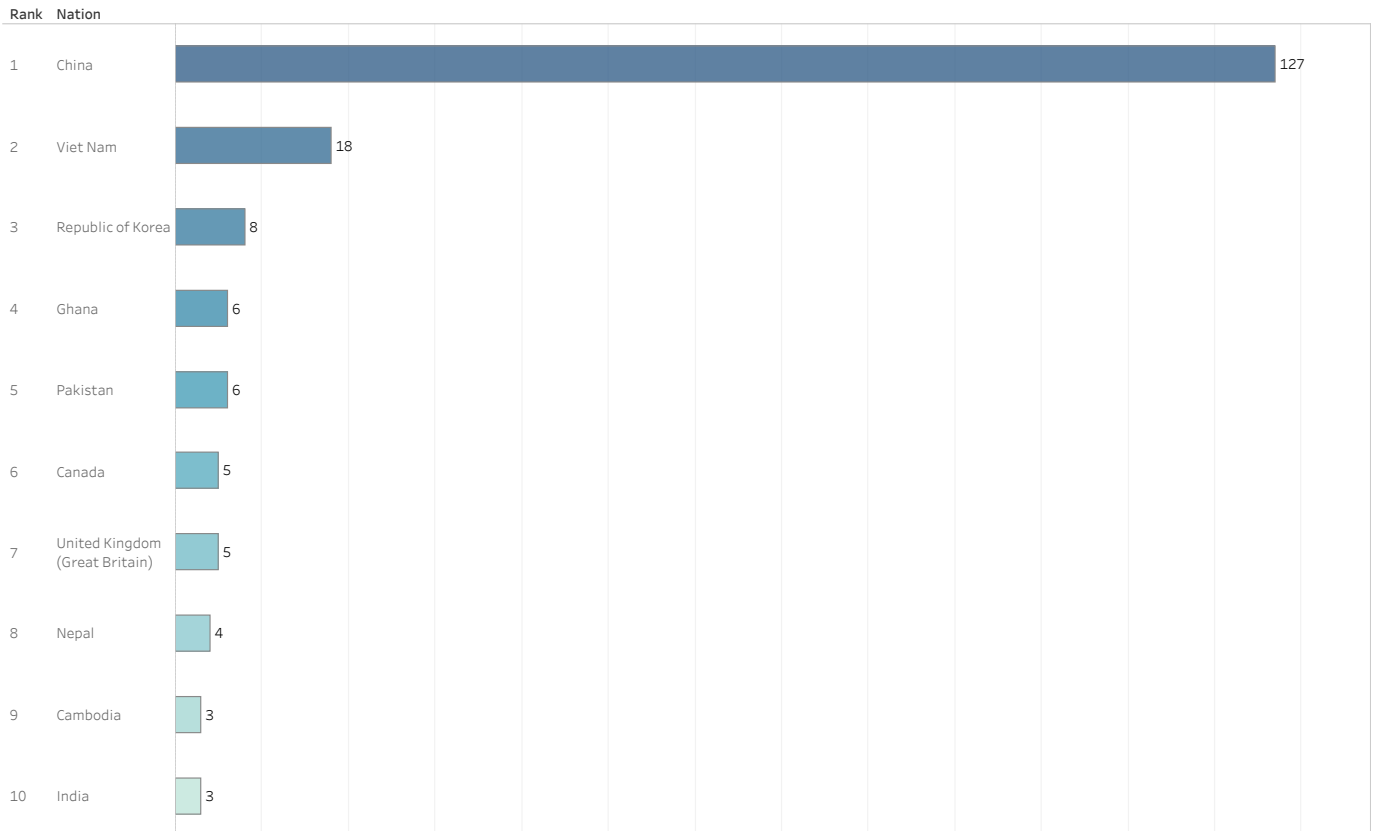
U.S. States of Enrolled Undergraduate and Graduate Students, 2019



2019 Degree Seeking Students Enrollment by Global Geographic (United States is Excluded)



2019 Degree Seeking Students Enrollment by Top Ten Global Nations (United States is Excluded)



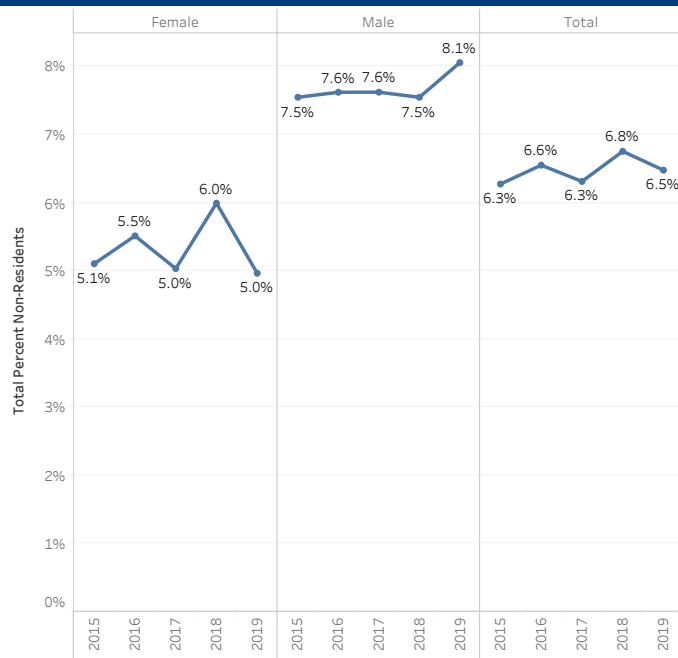
Undergraduate Students Majoring in STEM Disciplines By Gender			Undergraduate Students Majoring in STEM Disciplines By First Generation		
MajorDescription STEM	2019		MajorDescription STEM	2019	
	Female	Male		First Generation	Non First Generation
Animal Behavior	30	4	Animal Behavior	4	30
Applied Mathematical Sciences	17	15	Applied Mathematical Sciences	5	27
Biology	163	64	Biology	30	197
Biomedical Engineering	43	28	Biomedical Engineering	7	64
Biophysics	4	5	Biophysics		9
Cell Biology/Biochemistry	39	28	Cell Biology/Biochemistry	6	61
Chemical Engineering	39	51	Chemical Engineering	13	77
Chemistry	39	18	Chemistry	10	47
Civil Engineering	24	77	Civil Engineering	6	95
Computer Engineering	12	35	Computer Engineering	7	40
Computer Sci. & Engineering	26	76	Computer Sci. & Engineering	12	90
Computer Science	16	48	Computer Science	7	57
Electrical Engineering	9	47	Electrical Engineering	9	47
Environmental Geosciences	4	4	Environmental Geosciences	2	6
Geology	6	6	Geology		12
Interdisc Studies Econ & Math	7	16	Interdisc Studies Econ & Math	4	19
Mathematical Economics	17	33	Mathematical Economics	4	46
Mathematics	20	20	Mathematics	4	36
Mechanical Engineering	33	114	Mechanical Engineering	13	134
Neuroscience	65	21	Neuroscience	7	79
Physics	5	23	Physics	3	25
Grand Total	618	733	Grand Total	153	1,198

Undergraduate Students Majoring in STEM Disciplines By Race/Ethnicity					
MajorDescription STEM	2019				Grand Total
	International	Race Unknown	Students of Color	White	
Animal Behavior			9	25	34
Applied Mathematical Sciences	12		8	12	32
Biology	6	1	58	162	227
Biomedical Engineering	6		7	58	71
Biophysics			1	8	9
Cell Biology/Biochemistry	6		19	42	67
Chemical Engineering	6		12	72	90
Chemistry	5		6	46	57
Civil Engineering	4	1	13	83	101
Computer Engineering	8		7	32	47
Computer Sci. & Engineering	20	1	23	58	102
Computer Science	9		17	38	64
Electrical Engineering	9		13	34	56
Environmental Geosciences				8	8
Geology			2	10	12
Interdisc Studies Econ & Math	7		4	12	23
Mathematical Economics	11		5	34	50
Mathematics	11		4	25	40
Mechanical Engineering	14		22	111	147
Neuroscience	2		15	69	86
Physics	5		4	19	28
Grand Total	141	3	249	958	1,351

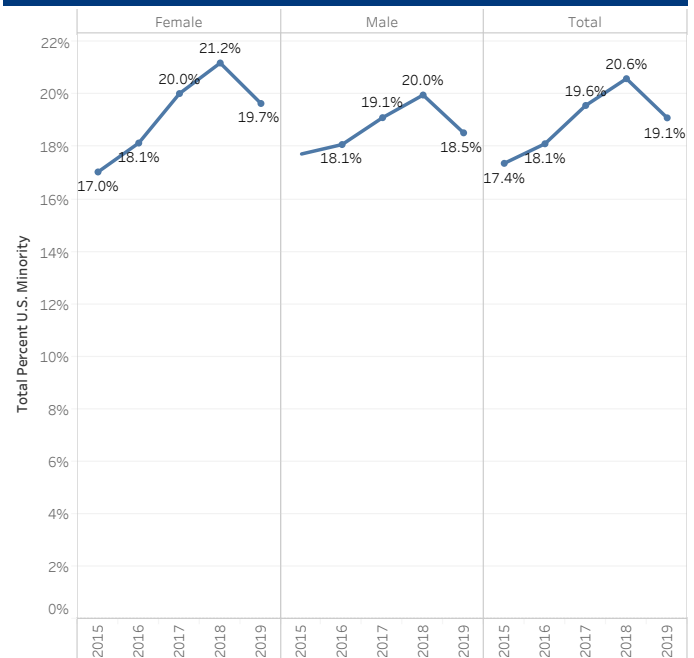
Undergrad Enrollment by Gender and Ethnicity
(Reference: IPEDS Fall Enrollment) *NHPI-Native Hawaiian and Pacific Islander

		American Indian	Asian	Black	Hispanic	Multi-race	NHPI*	Nonresident Alien	Unknown	White	Total	Total % Non-Resid..	% Students of Color
2015	Female	0	96	55	96	70	0	95	7	1,441	1,860	5.1%	17.0%
	Male	1	60	65	122	55	0	129	5	1,272	1,709	7.5%	17.7%
	Total	1	156	120	218	125	0	224	12	2,713	3,569	6.3%	17.4%
2016	Female	0	101	53	108	67	0	100	4	1,380	1,813	5.5%	18.1%
	Male	1	68	70	116	63	0	134	2	1,304	1,758	7.6%	18.1%
	Total	1	169	123	224	130	0	234	6	2,684	3,571	6.6%	18.1%
2017	Female	0	112	58	120	76	0	92	7	1,362	1,827	5.0%	20.0%
	Male	0	72	69	129	71	0	136	1	1,306	1,784	7.6%	19.1%
	Total	0	184	127	249	147	0	228	8	2,668	3,611	6.3%	19.6%
2018	Female	1	122	53	122	91	0	110	6	1,330	1,835	6.0%	21.2%
	Male	1	81	74	126	70	0	133	1	1,276	1,762	7.5%	20.0%
	Total	2	203	127	248	161	0	243	7	2,606	3,597	6.8%	20.6%
2019	Female	1	106	53	123	81	0	92	5	1,391	1,852	5.0%	19.7%
	Male	1	75	70	112	70	1	143	1	1,302	1,775	8.1%	18.5%
	Total	2	181	123	235	151	1	235	6	2,693	3,627	6.5%	19.1%

Percent Non-Resident Alien Students by Gender_Undergraduate Enrollment Trends



Percent Students of Color by Gender_Undergraduate Enrollment Trends



Graduate Enrollment by Gender and Ethnicity
(Reference: IPEDS Fall Enrollment) *NHPI-Native Hawaiian and Pacific Islander

	American Indian	Asian	Black	Hispanic	Multi-race	NHPI*	Nonresident Alien	Unknown	White	Total	Total % Non-Residents	% Students of Color	
2015	Female	0	0	0	2	2	0	4	0	22	30	13.3%	13.3%
	Male	0	0	0	0	0	0	5	1	20	26	19.2%	0.0%
	Total	0	0	0	2	2	0	9	1	42	56	16.1%	7.1%
2016	Female	0	0	0	1	2	0	4	1	19	27	14.8%	11.1%
	Male	0	1	1	1	0	0	8	0	17	28	28.6%	10.7%
	Total	0	1	1	2	2	0	12	1	36	55	21.8%	10.9%
2017	Female	0	1	1	1	1	0	16	2	18	40	40.0%	50.0%
	Male	0	0	0	0	2	0	8	1	16	27	29.6%	37.0%
	Total	0	1	1	1	3	0	24	3	34	67	35.8%	44.8%
2018	Female	0	1	1	1	0	0	16	3	18	40	40.0%	47.5%
	Male	0	0	0	0	0	0	8	3	20	31	25.8%	25.8%
	Total	0	1	1	1	0	0	24	6	38	71	33.8%	38.0%
2019	Female	1	3	0	2	1	0	10	5	22	44	22.7%	38.6%
	Male	0	0	1	0	0	0	6	3	16	26	23.1%	26.9%
	Total	1	3	1	2	1	0	16	8	38	70	22.9%	34.3%

Total Enrollment by Gender and Ethnicity
(Reference: IPEDS Fall Enrollment) *NHPI-Native Hawaiian and Pacific Islander

	American Indian	Asian	Black	Hispanic	Multi-race	NHPI*	Nonresident Alien	Unknown	White	Total	Total % Non-Residents	% Students of Color	
2015	Female	0	96	55	98	72	0	99	7	1,463	1,890	5.2%	17.0%
	Male	1	60	65	122	55	0	134	6	1,292	1,735	7.7%	17.5%
	Total	1	156	120	220	127	0	233	13	2,755	3,625	6.4%	17.2%
2016	Female	0	101	53	109	69	0	104	5	1,399	1,840	5.7%	18.0%
	Male	1	69	71	117	63	0	142	2	1,321	1,786	8.0%	18.0%
	Total	1	170	124	226	132	0	246	7	2,720	3,626	6.8%	18.0%
2017	Female	0	113	59	121	77	0	108	9	1,380	1,867	5.8%	19.8%
	Male	0	72	69	129	73	0	144	2	1,322	1,811	8.0%	18.9%
	Total	0	185	128	250	150	0	252	11	2,702	3,678	6.9%	19.4%
2018	Female	1	123	54	123	91	0	126	9	1,348	1,875	6.7%	20.9%
	Male	1	81	74	126	70	0	141	4	1,296	1,793	7.9%	19.6%
	Total	2	204	128	249	161	0	267	13	2,644	3,668	7.3%	20.3%
2019	Female	2	109	53	125	82	0	102	10	1,413	1,896	5.4%	19.6%
	Male	1	75	71	112	70	1	149	4	1,318	1,801	8.3%	18.3%
	Total	3	184	124	237	152	1	251	14	2,731	3,697	6.8%	19.0%

COMPLETIONS BY FIELD OF STUDY

COMPLETIONS BY FIELD OF STUDY BUCKNELL UNIVERSITY

Completions by Field of Study For First Major By Category

	2014-15		2015-16		2016-17		2017-18		2018-19	
	Undergraduate	Graduate	Undergraduate	Graduate	Undergraduate	Graduate	Undergraduate	Graduate	Undergraduate	Graduate
Area and ethnic studies	6		9		8		4		9	
Biological/life sciences	108	3	102	5	115	3	92	1	105	4
Business/marketing	131		128		126		138		144	
Computer and info. Sciences	15		17		14		18		14	
Education	25	3	32	10	20	1	31	5	24	5
Engineering/engineering technologies	147	8	156	9	167	6	167	3	154	5
English	30	2	48	4	30	4	31	5	24	1
Foreign languages and literature	31		15		15		15		25	
History	17		16		9		14		14	
Interdisciplinary studies	6		6		14		11		19	
Liberal arts/general studies	1		2		2				2	
Mathematics	10		9	1	16		11		16	
Natural resources/Envir. science	11		15		16		14		19	
Philosophy, religion, theology	10		7				6		11	
Physical sciences	30	5	22	4	30	5	24	1	18	3
Psychology	51	1	60	3	64	2	53	1	59	
Social sciences	225		192		202		205		191	
Visual and performing arts	14		15		19		18		16	
Grand Total	868	22	851	36	867	21	852	16	864	18

Completions by Field of Study For Second Major By Category

	2014-15	2015-16	2016-17	2017-18	2018-19
	Undergraduate	Undergraduate	Undergraduate	Undergraduate	Undergraduate
Area and ethnic studies	5	18	7	16	14
Biological/life sciences	4	2	2	4	2
Business/marketing	8	4	7	8	6
Computer and info. Sciences				2	4
Education	2	3	3		
English	12	8	9	8	15
Foreign languages and literature	31	29	34	25	26
History	5	8	10	10	7
Interdisciplinary studies				1	
Liberal arts/general studies	1	1		3	
Mathematics	1		5	1	
Natural resources/Envir. science	6	5	8	9	7
Philosophy, religion, theology	9	9	9	2	5
Physical sciences	1	5	2	4	4
Psychology	13	33	7	12	16
Social sciences	73	55	66	57	60
Visual and performing arts	10	6	4	8	4
Grand Total	181	186	173	170	170

**Completions by Field of Study For First Major
By Gender and Race/Ethnicity**

	2014-15		2015-16		2016-17		2017-18		2018-19	
	Undergraduate	Graduate	Undergraduate	Graduate	Undergraduate	Graduate	Undergraduate	Graduate	Undergraduate	Graduate
Female	445	9	481	20	462	8	445	10	448	9
Male	423	13	370	16	405	13	407	6	416	9
Grand Total	868	22	851	36	867	21	852	16	864	18
	Undergraduate	Graduate	Undergraduate	Graduate	Undergraduate	Graduate	Undergraduate	Graduate	Undergraduate	Graduate
American Indian/Alaska					1					
Asian	28		33	1	33		30		52	
Black/African American	30	1	22	1	31		27		36	1
Hispanic/Latino	46	1	40	1	50		41	1	75	
Multiple Races	27		34	1	29	1	29	2	35	
Non-Resident Alien	43	3	40	2	47	2	41	4	56	6
Unknown	8	1	1	2	3		2		1	1
White	686	16	681	28	673	18	682	9	609	10
Grand Total	868	22	851	36	867	21	852	16	864	18

**Completions by Field of Study For Second Major
By Gender and Race/Ethnicity**

	2014-15	2015-16	2016-17	2017-18	2018-19
	Undergraduate	Undergraduate	Undergraduate	Undergraduate	Undergraduate
Female	104	135	110	106	110
Male	77	51	63	64	60
Grand Total	181	186	173	170	170
	Undergraduate	Undergraduate	Undergraduate	Undergraduate	Undergraduate
Asian	3	9	6	4	7
Black/African American	6	9	4	6	8
Hispanic/Latino	18	7	17	8	17
Multiple Races	3	6	6	9	6
Non-Resident Alien	7	6	7	9	8
Unknown	2				
White	142	149	133	134	124
Grand Total	181	186	173	170	170

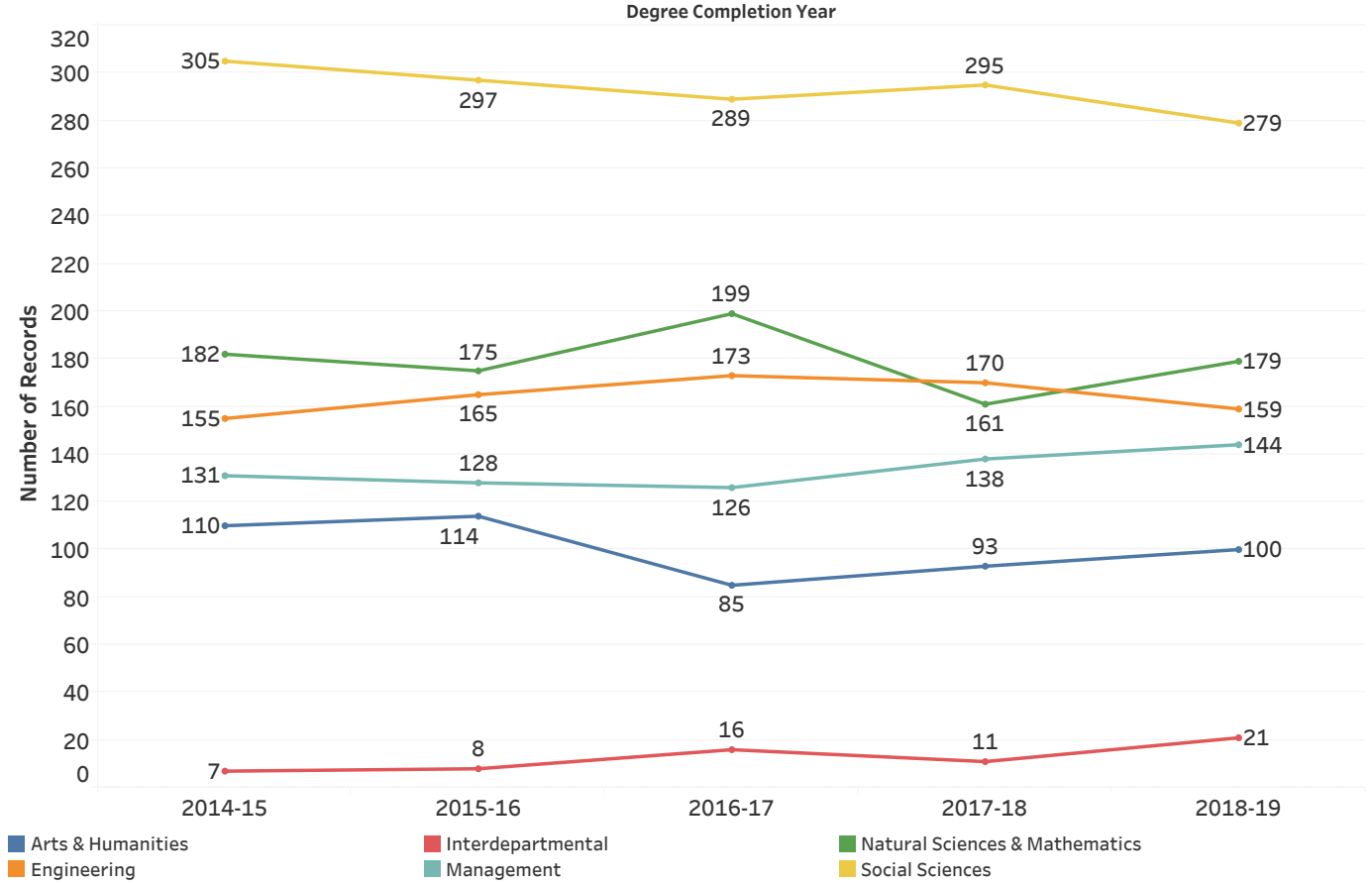
Completions by Broad Disciplinary Category For First Major

	2014-15		2015-16		2016-17		2017-18		2018-19	
	Undergraduate	Graduate	Undergraduate	Graduate	Undergraduate	Graduate	Undergraduate	Graduate	Undergraduate	Graduate
Arts & Humanities	108	2	110	4	81	4	88	5	99	1
Engineering	147	8	156	9	167	6	167	3	154	5
Interdepartmental	7		8		16		11		21	
Management	131		128		126		138		144	
Natural Sciences & Mathematics	174	8	165	10	191	8	159	2	172	7
Social Sciences	301	4	284	13	286	3	289	6	274	5
Grand Total	868	22	851	36	867	21	852	16	864	18

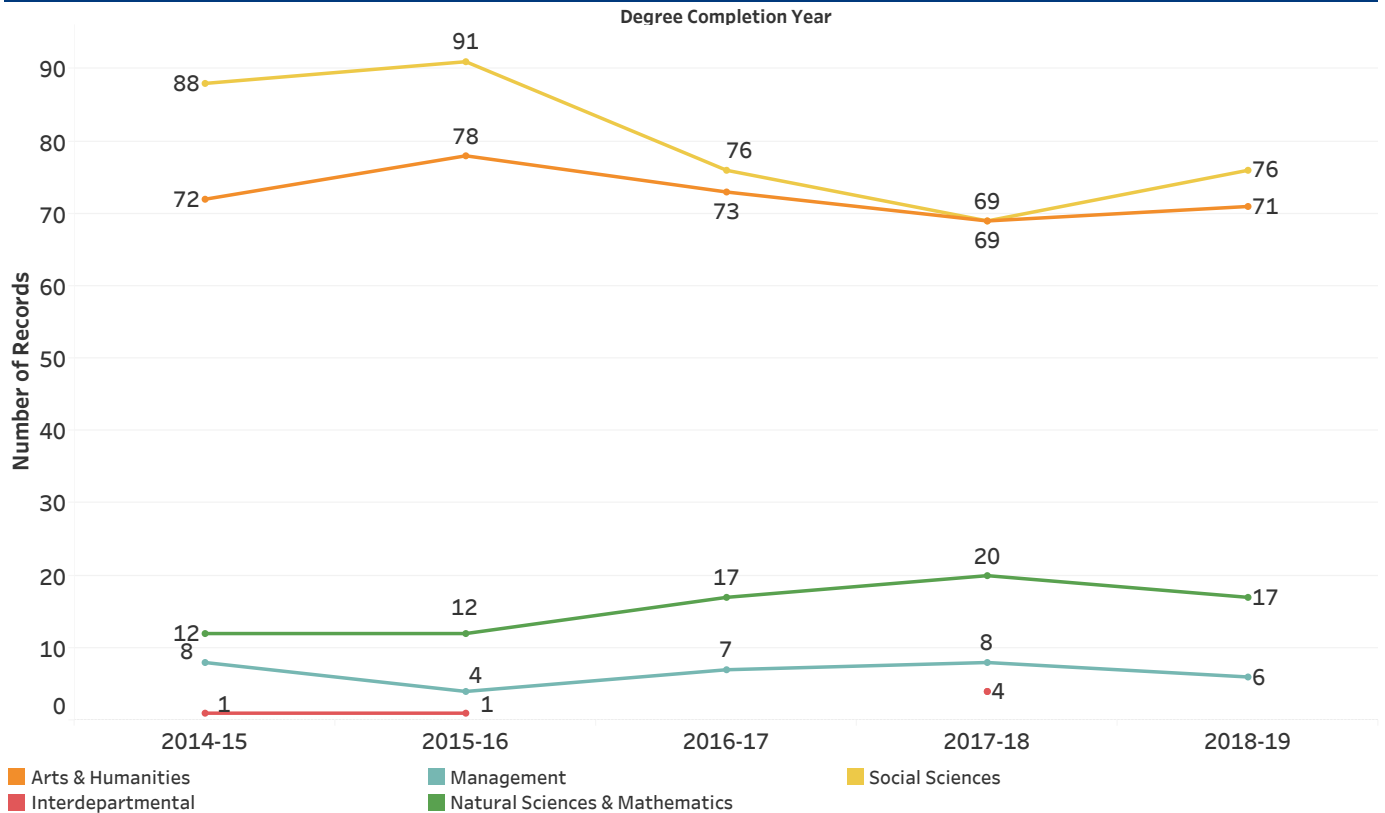
Completions by Broad Disciplinary Category For Second Major

	2014-15	2015-16	2016-17	2017-18	2018-19
	Undergraduate	Undergraduate	Undergraduate	Undergraduate	Undergraduate
Arts & Humanities	72	78	73	69	71
Interdepartmental	1	1		4	
Management	8	4	7	8	6
Natural Sciences & Mathematics	12	12	17	20	17
Social Sciences	88	91	76	69	76
Grand Total	181	186	173	170	170

Head Counts of Undergraduate Completions by Broad Disciplinary Category - First Major



Head Counts of Undergraduate Completions by Broad Disciplinary Category - Second Major



ACADEMICS, CO-CURRICULAR AND EXTRACURRICULAR ACTIVITIES

ACADEMICS, CO-CURRICULAR AND EXTRACURRICULAR ACTIVITIES

BUCKNELL UNIVERSITY

Undergraduate Majors by College and Gender

College	Department	Major Description	2018			2019		
			F	M	Total	F	M	Total
College of Arts & Sciences	Africana Studies	Africana Studies	1	3	4	3	6	9
	Animal Behavior	Animal Behavior	31	4	35	31	4	35
	Art & Art History	Art History	8	1	9	6	1	7
		Studio Art	4	1	5	5	4	9
	Biology	Biology	156	62	218	161	61	222
		Cell Biology/Biochemistry	48	24	72	39	28	67
	Chemistry	Chemistry	30	15	45	38	17	55
	Classics&Ancient Medit Studies	Classics & Ancient Med Studies	5	8	13	4	4	8
	College Major	College Major					1	1
	Computer Science	Computer Science	13	47	60	16	48	64
	East Asian Studies	East Asian Studies	4	1	5	4	4	8
	Economics	Economics	35	85	120	31	83	114
	Education	Early Childhood Education	38		38	34	1	35
		Education	19	6	25	22	12	34
	English	English - Creative Writing	12	6	18	16	7	23
		English - Film/Media Studies	3	6	9	7	5	12
		English - Literary Studies	20	4	24	23	4	27
	Environ. Studies & Sciences	Environmental Studies	15	20	35	16	15	31
	Geography	Geography	2	5	7	2	1	3
	Geology & Environ Geosciences	Environmental Geosciences	3	3	6	4	4	8
		Geology	6	7	13	5	5	10
	History	History	8	23	31	8	22	30
	Humanities	Comparative Humanities		2	2	1		1
	Interdepartmental	Interdepartmental	14	6	20	5	3	8
	Interdisc Studies: Math & Econ	Interdisc Studies Econ & Math	15	20	35	7	16	23
	International Relations	International Relations	24	21	45	28	27	55
	Languages/Cultures/Linguistics	French	9		9	7	1	8
		German	2		2	1	3	4
		Italian Studies	6	2	8	6	6	12
		Linguistics	8	1	9	7	1	8
		Russian				1		1
	Mathematical Economics	Mathematical Economics	13	26	39	17	34	51
	Mathematics	Applied Mathematical Sciences	14	12	26	17	15	32
		Mathematics	19	19	38	19	17	36
	Music	Music	3	4	7	2	4	6
		Music Education	8	1	9	6	2	8
	Neuroscience	Neuroscience	70	22	92	66	21	87
	Philosophy	Philosophy	8	12	20	8	10	18
	Physics	Biophysics		1	1	4	5	9
		Physics	8	22	30	5	23	28
	Political Science	Political Science	52	75	127	70	87	157
	Psychology	Psychology	80	20	100	86	28	114
	Religious Studies	Religion	1	4	5		4	4
	Sociology and Anthropology	Anthropology	9	2	11	1	5	6
		Sociology	17	9	26	22	6	28
	Spanish	Spanish	13	8	21	15	7	22
	Theatre and Dance	Theatre	6	1	7	7	1	8
Women's and Gender Studies	Women's and Gender Studies	6	1	7	10	1	11	
	Total	866	622	1,488	893	664	1,557	
College of Engineering	Biomedical Engineering	Biomedical Engineering	35	28	63	46	29	75
	Chemical Engineering	Chemical Engineering	48	54	102	41	52	93
	Civil & Environmental Engr.	Civil Engineering	30	71	101	25	78	103
		Environmental Engineering	21	14	35	28	15	43
	Computer Science	Computer Sci. & Engineering	25	82	107	28	77	105
	Electrical & Computer Engr.	Computer Engineering	8	26	34	12	35	47
		Electrical Engineering	14	49	63	9	47	56
	Mechanical Engineering	Mechanical Engineering	25	107	132	33	116	149
	Undeclared Engineering	Undeclared Engineering	11	30	41	7	35	42
		Total	217	461	678	229	484	713
Freeman College of Management	Management	Accounting				1		1
		Acct & Financial Management	41	92	133	46	93	139
		Finance					2	2
		Global Management	17	12	29	13	19	32
		Managing for Sustainability	16	9	25	15	10	25
	Markets, Innovation & Design	48	20	68	47	20	67	
	Undeclared Management	Undeclared Management	127	172	299	134	178	312
	Total	249	305	554	256	322	578	
Grand Total		1,332	1,388	2,720	1,378	1,470	2,848	

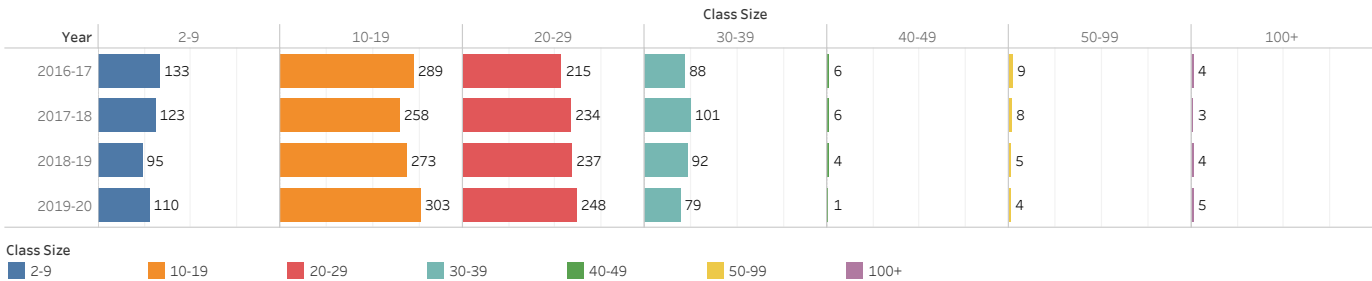
Undergraduate Class Size

To calculate class sizes, we used the Common Data Set (CDS) definition which is used for our external reports to college guides and rankings.

A class section is an organized course offered for credit, identified by discipline and number, meeting at a stated time or times in a classroom or similar setting, and not a subsection such as a laboratory or discussion session. Undergraduate class sections are defined as any sections in which at least one degree-seeking undergraduate student is enrolled for credit. Exclude distance learning classes and noncredit classes and individual instruction such as dissertation or thesis research, music instruction, or one-to-one readings. Exclude students in independent study, co-operative programs, internships, foreign language taped tutor sessions, practicums, and all students in one-on-one classes. Each class section should be counted only once and should not be duplicated because of course catalog cross-listings.

Number of Class Sections with Undergraduates Enrolled in the Fall of 2016-2019

Class Size	Year				Grand Total
	2016-17	2017-18	2018-19	2019-20	
2-9	133	123	95	110	461
10-19	289	258	273	303	1,123
20-29	215	234	237	248	934
30-39	88	101	92	79	360
40-49	6	6	4	1	17
50-99	9	8	5	4	26
100+	4	3	4	5	16
Grand Total	744	733	710	750	2,937



Number of Class Sections with Undergraduates Enrolled by College in the Fall of 2019

Size	College of Arts & Sciences		College of Engineering		Freeman College of Management		Grand Total	
	Count	%	Count	%	Count	%	Count	%
2-9	97	17%	10	10%	3	4%	110	15%
10-19	226	39%	50	52%	27	39%	303	40%
20-29	180	31%	30	31%	38	54%	248	33%
30-39	73	13%	5	5%	1	1%	79	11%
40-49	1	0%					1	0%
50-99	4	1%					4	1%
100+	3	1%	1	1%	1	1%	5	1%
Grand Total	584	100%	96	100%	70	100%	750	100%

Number of Class Sections with Undergraduates Enrolled by Division in the Fall of 2019

Size	Arts and Humanit..		Engineering		Management		Natural Sciences		Social Sciences		Unassigned		Grand Total	
	Count	%	Count	%	Count	%	Count	%	Count	%	Count	%	Count	%
2-9	53	25%	10	10%	3	4%	16	12%	25	13%	3	7%	110	15%
10-19	83	39%	50	52%	27	39%	31	24%	73	37%	39	85%	303	40%
20-29	58	27%	30	31%	38	54%	65	50%	57	29%			248	33%
30-39	16	8%	5	5%	1	1%	10	8%	43	22%	4	9%	79	11%
40-49	1	0%											1	0%
50-99							4	3%					4	1%
100+			1	1%	1	1%	3	2%					5	1%
Grand Total	211	100%	96	100%	70	100%	129	100%	198	100%	46	100%	750	100%

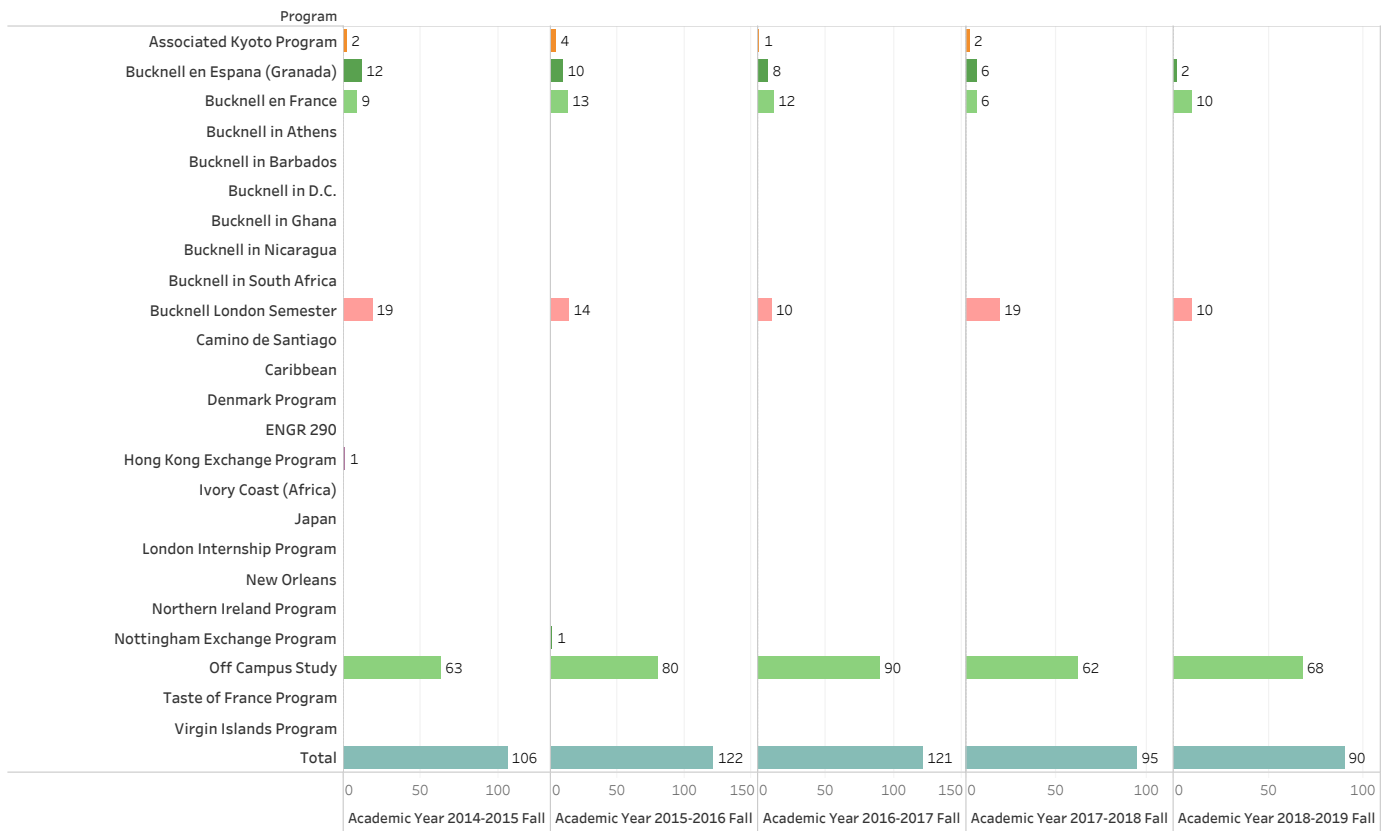
Undergraduate Off Campus Experience by Program

Data Source: From Bucknell Data Warehouse pulled by Cognos as of 11/4/2019

Off-Campus Study numbers were retrieved from the student record system named Horizons. The big increase of off-campus study in 2017 and 2018 summer was tied to two factors: Freeman College of Management and ECON students taking part in the LSE summer school program and a very large number of Chinese International Students taking courses on summer programs at home in China.

Program	AY 2014-2015 Fall	AY 2014-2015 Spring	AY 2014-2015 Summer	AY 2015-2016 Fall	AY 2015-2016 Spring	AY 2015-2016 Summer	AY 2016-2017 Fall	AY 2016-2017 Spring	AY 2016-2017 Summer	AY 2017-2018 Fall	AY 2017-2018 Spring	AY 2017-2018 Summer	AY 2018-2019 Fall	AY 2018-2019 Spring	AY 2018-2019 Summer
Associated Kyoto Program	2	2		4	2		1			2	2				
Bucknell en Espana (Granada)	12	13		10	25		8	18		6	21		2	19	
Bucknell en France	9	9		13	13		12	15		6	13		10	14	
Bucknell in Athens		6			1			4			11			3	
Bucknell in Barbados			17			14			10						11
Bucknell in D.C.		7			2										
Bucknell in Ghana					11						10			2	1
Bucknell in Nicaragua						17			15						
Bucknell in South Africa									20			20			20
Bucknell London Semester	19	15		14	13		10	16		19	14		10	15	
Camino de Santiago															10
Caribbean			11			6			7			8			12
Denmark Program			11			11			13			13			
ENGR 290			45			33			36			17			27
Hong Kong Exchange Program	1													1	
Ivory Coast (Africa)															8
Japan						8						11			
London Internship Program			11			12						7			
New Orleans			9			15			9						7
Northern Ireland Program			13												
Nottingham Exchange Program				1										1	
Off Campus Study	63	150	21	80	160	22	90	184	67	62	189	69	68	218	69
Taste of France Program									12			12			13
Virgin Islands Program			24			27			27						
Total	106	202	162	122	227	165	121	237	216	95	260	157	90	273	178

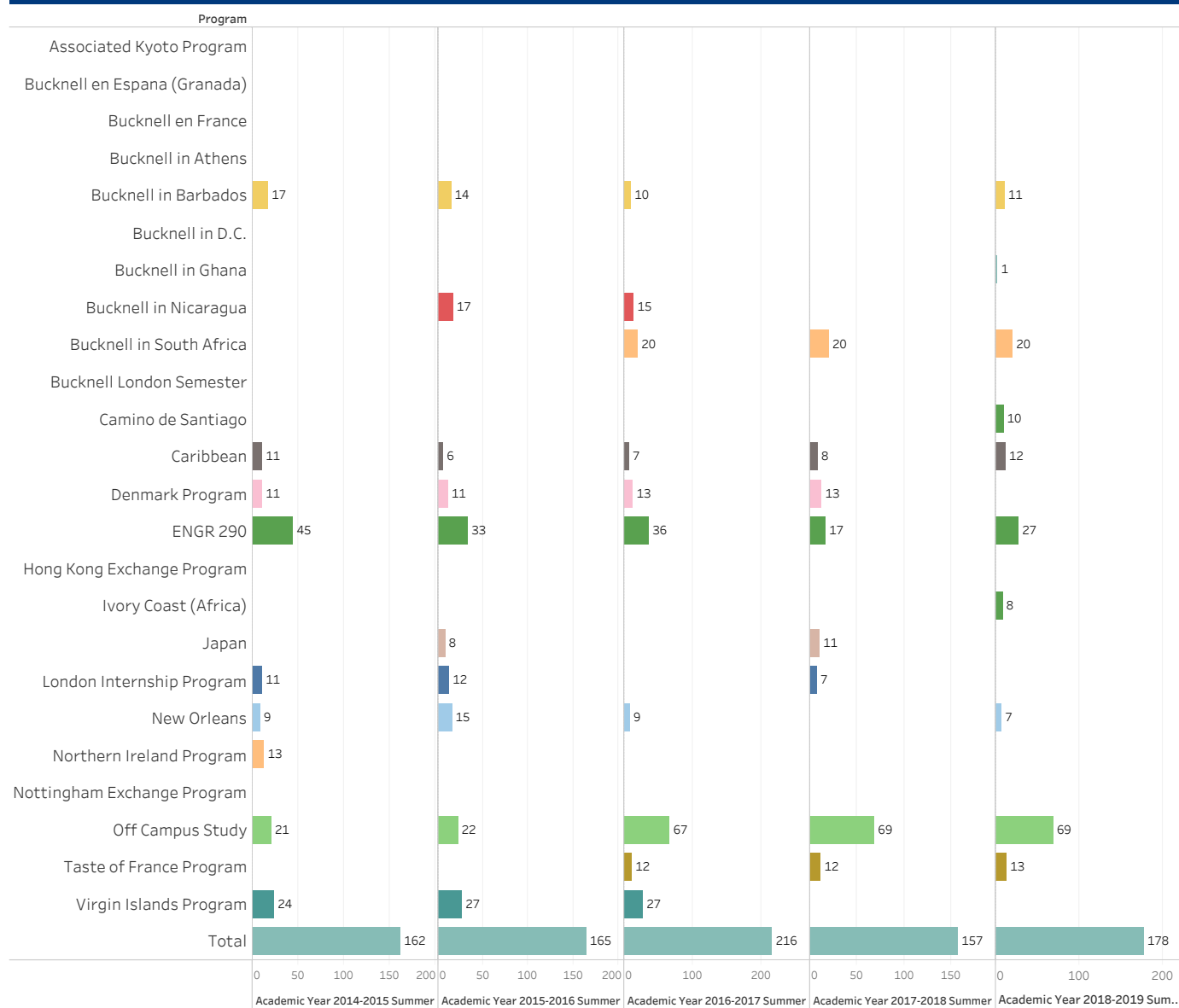
Undergraduate Off Campus Experience by Program Fall Term (2014-2018)



Undergraduate Off Campus Experience by Program Spring Term (2014-2018)



Undergraduate Off Campus Experience by Program Summer Term (2014-2018)



Participation Rate of Off Campus Experience by Graduating Senior Class

* Off campus experiences exclude main campus study and non traditional study. This is an unduplicated count. Since some summer off campus programs do not require registration, listed number may not include students who had those summer experiences.

** Total number of graduated seniors is based on a 12-month time period beginning July 1 of the previous calendar year and ending June 30 of the current calendar year, which is consistent with IPEDS reporting. The total number indicates seniors who graduated in July, January, and May at Bucknell.

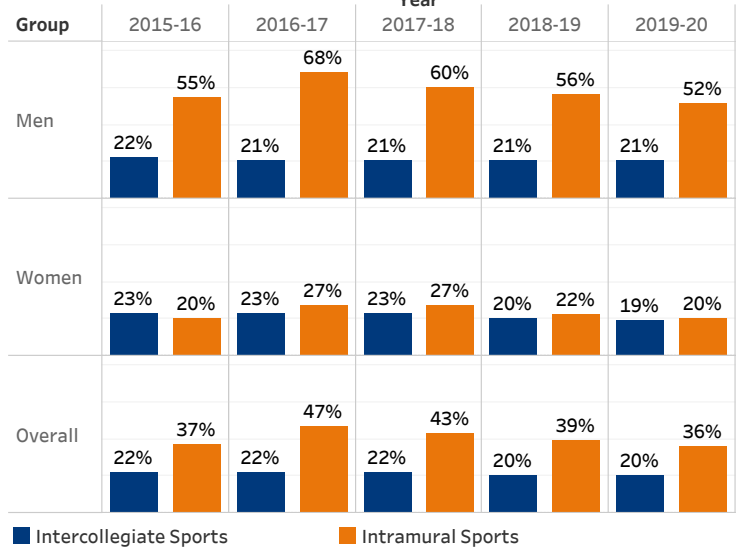
	Seniors with Off Campus Experiences*	Sum of Total Graduated Seniors**	Participation Rate
2013-14	363	853	43%
2014-15	352	868	41%
2015-16	395	851	46%
2016-17	422	867	49%
2017-18	425	852	50%
2018-19	426	864	49%
6 year Average	397	859	46%

Student Athletic Participation

Data source: from College Guide Survey reported by the Athletic office

Group	Year	Intercollegiate Sports	Intramural Sports
Men	2015-16	22%	55%
	2016-17	21%	68%
	2017-18	21%	60%
	2018-19	21%	56%
	2019-20	21%	52%
Women	2015-16	23%	20%
	2016-17	23%	27%
	2017-18	23%	27%
	2018-19	20%	22%
	2019-20	19%	20%
Overall	2015-16	22%	37%
	2016-17	22%	47%
	2017-18	22%	43%
	2018-19	20%	39%
	2019-20	20%	36%

Student Athletic Participation Trend Over Five Years



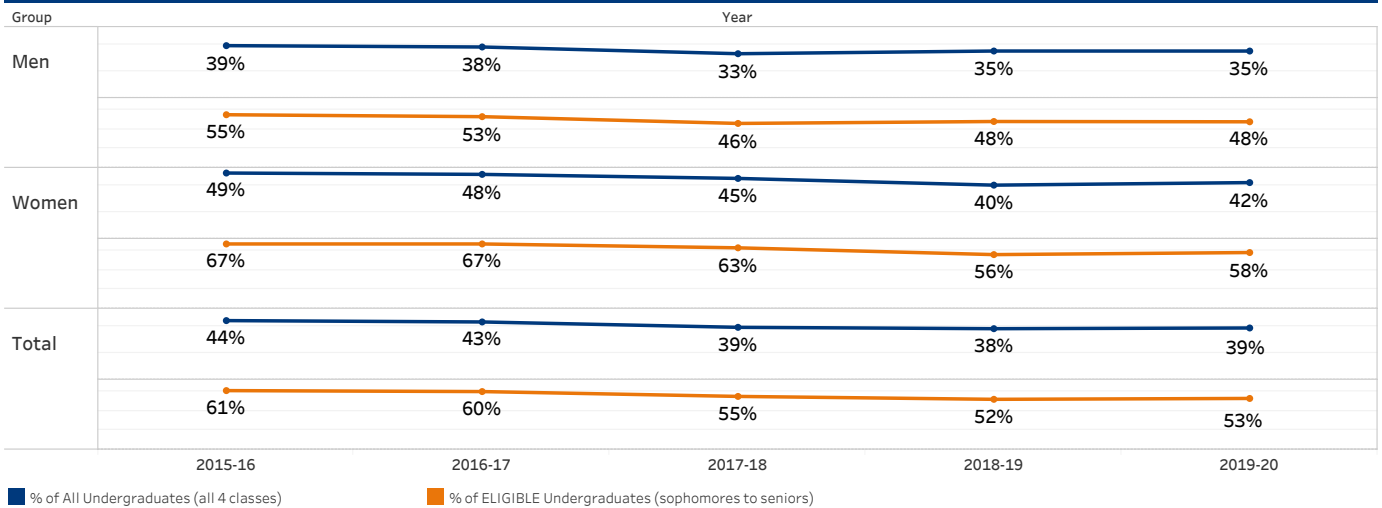
Student Greek Participation

Data source: from OIR&P frozen fall enrollment files

Kappa Sigma Fraternity was excluded since 2017 fall; Four classes were included as eligible students: sophomore, junior, senior, and 4th year of 5-year Engineering.

Group	Year	Number of Greek Organizations (Active)	Number of Students in Active Greek Organizations (includes fall rush)	% of All Undergraduates (all 4 classes)	% of ELIGIBLE Undergraduates (sophomores to seniors)
Men	2015-16	8	668	39%	55%
	2016-17	9	664	38%	53%
	2017-18	8	593	33%	46%
	2018-19	9	623	35%	48%
	2019-20	9	621	35%	48%
Women	2015-16	8	913	49%	67%
	2016-17	9	875	48%	67%
	2017-18	9	831	45%	63%
	2018-19	8	727	40%	56%
	2019-20	9	776	42%	58%
Total	2015-16	16	1,581	44%	61%
	2016-17	18	1,539	43%	60%
	2017-18	17	1,424	39%	55%
	2018-19	17	1,350	38%	52%
	2019-20	18	1,397	39%	53%

Student Greek Participation Trend Over Five Years



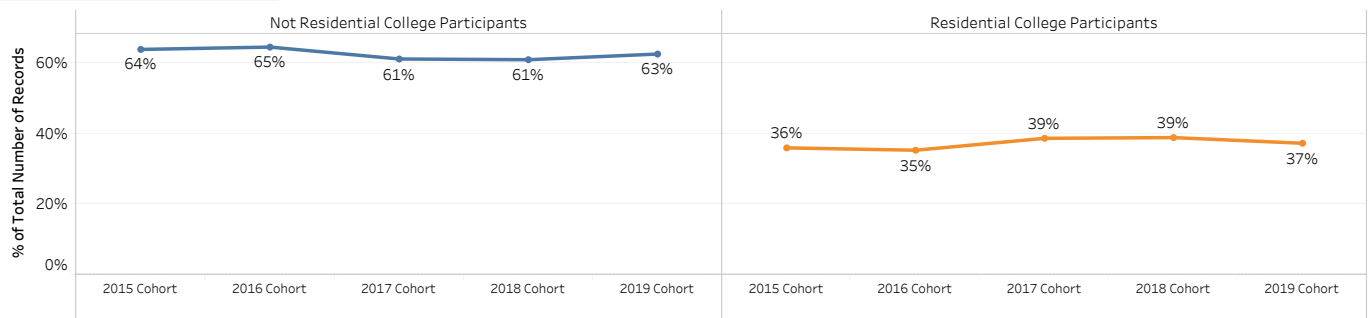
The Residential Colleges are themed living-learning communities tied to a first-semester class, in which students live and learn with their peers who share similar interests, and participate in off-campus trips and weekly Common Hour discussions led by faculty mentors. Bucknell residential colleges include Arts College, Discovery College, Environmental College, Food College, Global College, Humanities College, Languages & Cultures College, Social Justice College, and Society & Technology College.

Residential College Participants

Residential College	2015 Cohort	2016 Cohort	2017 Cohort	2018 Cohort	2019 Cohort	Grand Total
Not Residential College Participants	600	614	596	594	604	3,008
Residential College Participants	338	336	377	379	360	1,790
Grand Total	938	950	973	973	964	4,798

Residential College Participation Rates

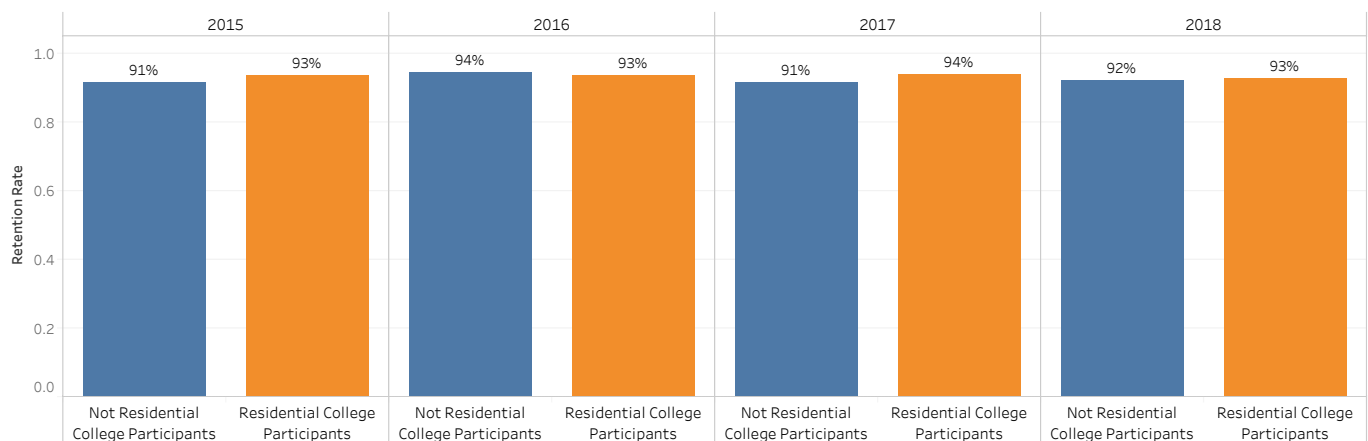
Residential College	2015 Cohort	2016 Cohort	2017 Cohort	2018 Cohort	2019 Cohort	Grand Total
Not Residential College Participants	64%	65%	61%	61%	63%	63%
Residential College Participants	36%	35%	39%	39%	37%	37%
Grand Total	100%	100%	100%	100%	100%	100%



Residential College
■ Not Residential College Participants
■ Residential College Participants

Retention Rates by Residential College

Residential College	2015	2016	2017	2018	Grand Total
Not Residential College Participants	91%	94%	91%	92%	92%
Residential College Participants	93%	93%	94%	93%	93%



First-Time First-Year Students by Residential College and Gender											
Gender	Not Residential College Participants					Residential College Participants					Grand Total
	2015 Cohort	2016 Cohort	2017 Cohort	2018 Cohort	2019 Cohort	2015 Cohort	2016 Cohort	2017 Cohort	2018 Cohort	2019 Cohort	
F	313	298	308	325	327	169	178	191	190	178	2,477
M	287	316	288	269	277	169	158	186	189	182	2,321
Grand Total	600	614	596	594	604	338	336	377	379	360	4,798

First-Time First-Year Students by Gender						
Gender	2015 Cohort	2016 Cohort	2017 Cohort	2018 Cohort	2019 Cohort	Grand Total
F	482	476	499	515	505	2,477
M	456	474	474	458	459	2,321
Grand Total	938	950	973	973	964	4,798

% of First-Time First-Year Students by Residential College and Gender											
Gender	Not Residential College Participants					Residential College Participants					Grand Total
	2015 Cohort	2016 Cohort	2017 Cohort	2018 Cohort	2019 Cohort	2015 Cohort	2016 Cohort	2017 Cohort	2018 Cohort	2019 Cohort	
F	52%	49%	52%	55%	54%	50%	53%	51%	50%	49%	52%
M	48%	51%	48%	45%	46%	50%	47%	49%	50%	51%	48%

% of First-Time First-Year Students by Gender						
Gender	2015 Cohort	2016 Cohort	2017 Cohort	2018 Cohort	2019 Cohort	Grand Total
F	51%	50%	51%	53%	52%	52%
M	49%	50%	49%	47%	48%	48%

First-Time First-Year Students by Residential College and Race/Ethnicity											
Race/Ethnicity	Not Residential College Participants					Residential College Participants					Grand Total
	2015 Cohort	2016 Cohort	2017 Cohort	2018 Cohort	2019 Cohort	2015 Cohort	2016 Cohort	2017 Cohort	2018 Cohort	2019 Cohort	
White	474	524	486	491	504	193	187	212	215	242	3,528
Hispanic/Latino	46	30	42	34	39	33	23	31	28	25	331
Non-Resident Alien	11	9	7	4	12	40	60	52	60	41	296
Asian	30	19	22	25	18	32	28	35	30	23	262
Multiple Races	19	18	29	25	18	19	15	22	23	7	195
Black/African American	19	12	9	14	12	21	23	23	22	22	177
Unknown	1	2	1				2	1			7
Hawaiian/PacificIsland					1						1
American Indian or Alaska ..				1							1
Grand Total	600	614	596	594	604	338	336	377	379	360	4,798

First-Time First-Year Students by Race/Ethnicity						
Race/Ethnicity	2015 Cohort	2016 Cohort	2017 Cohort	2018 Cohort	2019 Cohort	Grand Total
White	667	711	698	706	746	3,528
Hispanic/Latino	79	53	73	62	64	331
Non-Resident Alien	51	69	59	64	53	296
Asian	62	47	57	55	41	262
Multiple Races	38	33	51	48	25	195
Black/African American	40	35	32	36	34	177
Unknown	1	2	3	1		7
Hawaiian/PacificIsland					1	1
American Indian or Alaska ..				1		1
Grand Total	938	950	973	973	964	4,798

% of First-Time First-Year Students by Residential College and Race/Ethnicity											
Race/Ethnicity	Not Residential College Participants					Residential College Participants					Grand Total
	2015 Cohort	2016 Cohort	2017 Cohort	2018 Cohort	2019 Cohort	2015 Cohort	2016 Cohort	2017 Cohort	2018 Cohort	2019 Cohort	
White	79%	85%	82%	83%	83%	57%	56%	56%	57%	67%	74%
Hispanic/Latino	8%	5%	7%	6%	6%	10%	7%	8%	7%	7%	7%
Non-Resident Alien	2%	1%	1%	1%	2%	12%	18%	14%	16%	11%	6%
Asian	5%	3%	4%	4%	3%	9%	8%	9%	8%	6%	5%
Multiple Races	3%	3%	5%	4%	3%	6%	4%	6%	6%	2%	4%
Black/African American	3%	2%	2%	2%	2%	6%	7%	6%	6%	6%	4%
Unknown	0%	0%	0%				1%	0%			0%
Hawaiian/PacificIsland					0%						0%
American Indian or Alaska ..				0%							0%

% of First-Time First-Year Students by Race/Ethnicity						
Race/Ethnicity	2015 Cohort	2016 Cohort	2017 Cohort	2018 Cohort	2019 Cohort	Grand Total
White	71%	75%	72%	73%	77%	74%
Hispanic/Latino	8%	6%	8%	6%	7%	7%
Non-Resident Alien	5%	7%	6%	7%	5%	6%
Asian	7%	5%	6%	6%	4%	5%
Multiple Races	4%	3%	5%	5%	3%	4%
Black/African American	4%	4%	3%	4%	4%	4%
Unknown	0%	0%	0%	0%		0%
Hawaiian/PacificIsland					0%	0%
American Indian or Alaska ..				0%		0%

First-Time First-Year Students by Residential College and First-Generation											
First Generation	Not Residential College Participants					Residential College Participants					Grand Total
	2015 Cohort	2016 Cohort	2017 Cohort	2018 Cohort	2019 Cohort	2015 Cohort	2016 Cohort	2017 Cohort	2018 Cohort	2019 Cohort	
No	544	576	554	551	568	284	286	317	317	302	4,299
Yes	56	38	42	43	36	54	50	60	62	58	499
Grand Total	600	614	596	594	604	338	336	377	379	360	4,798

First-Time First-Year Students by First-Gen						
First Generation	2015 Cohort	2016 Cohort	2017 Cohort	2018 Cohort	2019 Cohort	Grand Total
No	828	862	871	868	870	4,299
Yes	110	88	102	105	94	499
Grand Total	938	950	973	973	964	4,798

% of First-Time First-Year Students by Residential College and First-Generation											
First Generation	Not Residential College Participants					Residential College Participants					Grand Total
	2015 Cohort	2016 Cohort	2017 Cohort	2018 Cohort	2019 Cohort	2015 Cohort	2016 Cohort	2017 Cohort	2018 Cohort	2019 Cohort	
No	91%	94%	93%	93%	94%	84%	85%	84%	84%	84%	90%
Yes	9%	6%	7%	7%	6%	16%	15%	16%	16%	16%	10%

% of First-Time First-Year Students by First-Gen						
First Generation	2015 Cohort	2016 Cohort	2017 Cohort	2018 Cohort	2019 Cohort	Grand Total
No	88%	91%	90%	89%	90%	90%
Yes	12%	9%	10%	11%	10%	10%

First-Time First-Year Students by Residential College and Region												First-Time First-Year Students by Region						
Region	Not Residential College Participants					Residential College Participants					Grand Total	Region	2015 Cohort	2016 Cohort	2017 Cohort	2018 Cohort	2019 Cohort	Grand Total
	2015 Cohort	2016 Cohort	2017 Cohort	2018 Cohort	2019 Cohort	2015 Cohort	2016 Cohort	2017 Cohort	2018 Cohort	2019 Cohort								
Mid-Atlantic	370	394	369	373	366	194	157	199	223	212	2,857	Mid-Atlantic	564	551	568	596	578	2,857
New England	107	111	115	116	108	47	42	57	39	43	785	New England	154	153	172	155	151	785
International	14	9	7	6	16	40	62	49	60	45	308	International	54	71	56	66	61	308
West	43	31	30	22	30	26	32	35	23	24	296	West	69	63	65	45	54	296
South	36	36	42	38	43	16	20	19	14	14	278	South	52	56	61	52	57	278
Midwest	25	25	26	29	32	14	20	14	13	15	213	Midwest	39	45	40	42	47	213
Southwest	5	8	7	10	9	1	3	4	7	7	61	Southwest	6	11	11	17	16	61
Grand Total	600	614	596	594	604	338	336	377	379	360	4,798	Grand Total	938	950	973	973	964	4,798

% of First-Time First-Year Students by Residential College and Region												% of First-Time First-Year Students by Region						
Region	Not Residential College Participants					Residential College Participants					Grand Total	Region	2015 Cohort	2016 Cohort	2017 Cohort	2018 Cohort	2019 Cohort	Grand Total
	2015 Cohort	2016 Cohort	2017 Cohort	2018 Cohort	2019 Cohort	2015 Cohort	2016 Cohort	2017 Cohort	2018 Cohort	2019 Cohort								
Mid-Atlantic	62%	64%	62%	63%	61%	57%	47%	53%	59%	59%	60%	Mid-Atlantic	60%	58%	58%	61%	60%	60%
New England	18%	18%	19%	20%	18%	14%	13%	15%	10%	12%	16%	New England	16%	16%	18%	16%	16%	16%
International	2%	1%	1%	1%	3%	12%	18%	13%	16%	13%	6%	International	6%	7%	6%	7%	6%	6%
West	7%	5%	5%	4%	5%	8%	10%	9%	6%	7%	6%	West	7%	7%	7%	5%	6%	6%
South	6%	6%	7%	6%	7%	5%	6%	5%	4%	4%	6%	South	6%	6%	6%	5%	6%	6%
Midwest	4%	4%	4%	5%	5%	4%	6%	4%	3%	4%	4%	Midwest	4%	5%	4%	4%	5%	4%
Southwest	1%	1%	1%	2%	1%	0%	1%	1%	2%	2%	1%	Southwest	1%	1%	1%	2%	2%	1%

First-Time First-Year Students by Residential College and Bucknell Grant												First-Time First-Year Students by Bucknell Grant						
Bucknell Grant includes any merit or need-based Bucknell funding.												Bucknell Grant includes any merit or need-based Bucknell funding.						
Bucknell Grant	Not Residential College Participants					Residential College Participants					Grand Total	Bucknell Grant	2015 Cohort	2016 Cohort	2017 Cohort	2018 Cohort	2019 Cohort	Grand Total
	2015 Cohort	2016 Cohort	2017 Cohort	2018 Cohort	2019 Cohort	2015 Cohort	2016 Cohort	2017 Cohort	2018 Cohort	2019 Cohort								
No	328	364	339	331	363	119	141	144	162	138	2,429	No	447	505	483	493	501	2,429
Yes	272	250	257	263	241	219	195	233	217	222	2,369	Yes	491	445	490	480	463	2,369
Grand Total	600	614	596	594	604	338	336	377	379	360	4,798	Grand Total	938	950	973	973	964	4,798

% of First-Time First-Year Students by Residential College and Bucknell Grant												% of First-Time First-Year Students by Bucknell Grant						
Bucknell Grant includes any merit or need-based Bucknell funding.												Bucknell Grant includes any merit or need-based Bucknell funding.						
Bucknell Grant	Not Residential College Participants					Residential College Participants					Grand Total	Bucknell Grant	2015 Cohort	2016 Cohort	2017 Cohort	2018 Cohort	2019 Cohort	Grand Total
	2015 Cohort	2016 Cohort	2017 Cohort	2018 Cohort	2019 Cohort	2015 Cohort	2016 Cohort	2017 Cohort	2018 Cohort	2019 Cohort								
No	55%	59%	57%	56%	60%	35%	42%	38%	43%	38%	51%	No	48%	53%	50%	51%	52%	51%
Yes	45%	41%	43%	44%	40%	65%	58%	62%	57%	62%	49%	Yes	52%	47%	50%	49%	48%	49%

Average Test Scores by Residential College
(The 2017 - 2019 SAT scores are based on the redesigned SAT test)

	Not Residential College Participants					Residential College Participants				
	2015 Cohort	2016 Cohort	2017 Cohort	2018 Cohort	2019 Cohort	2015 Cohort	2016 Cohort	2017 Cohort	2018 Cohort	2019 Cohort
Avg. ACT Total	29	30	29	30	30	30	30	30	30	31
Avg. SAT Total	1,282	1,273	1,327	1,326	1,331	1,325	1,319	1,336	1,350	1,353
Avg. SAT Verbal/SAT Evidence Based Reading & Writing_2017-2019	627	624	657	654	656	647	637	656	661	661
Avg. SAT Math	655	649	670	672	674	678	683	679	689	692
Avg. SAT Writing	633	632				642	644			
Avg. High School GPA	3.50	3.48	3.50	3.54	3.52	3.60	3.60	3.61	3.60	3.66
Avg. First Year GPA	3.27	3.24	3.28	3.23		3.26	3.27	3.28	3.29	

Median Test Scores by Residential College
(The 2017-2019 SAT scores are based on the redesigned SAT test)

	Not Residential College Participants					Residential College Participants				
	2015 Cohort	2016 Cohort	2017 Cohort	2018 Cohort	2019 Cohort	2015 Cohort	2016 Cohort	2017 Cohort	2018 Cohort	2019 Cohort
Median ACT Total	30	30	30	30	30	31	30	30	30	31
Median SAT Total	1,290	1,280	1,330	1,330	1,330	1,330	1,345	1,350	1,370	1,360
Median SAT Verbal/SAT Evidence Based Reading & Writing_2017-2019	630	620	660	650	660	650	640	660	660	660
Median SAT Math	650	650	670	680	680	680	690	680	700	700
Median SAT Writing	630	640				640	650			
Median High School GPA	3.52	3.50	3.52	3.54	3.55	3.65	3.65	3.63	3.65	3.73
Median First Year GPA	3.37	3.33	3.33	3.29		3.41	3.41	3.41	3.43	

STUDENT SUCCESS

STUDENT SUCCESS

BUCKNELL UNIVERSITY

Cohort Retention and Graduation Rates

*Adjusted for permissible omissions or changes in Banner data

Class of	Entered Fall	First-Year Cohort	Returned Sophomore Year	Retention Rate	Graduated Within 4 Years	Graduation Rate in 4 Yrs	Graduated Within 6 Years	Graduation Rate in 6 yrs
2003	1999	889	836	94%	756	85%	797	90%
2004	2000	914	862	94%	773	85%	816	89%
2005	2001	913	863	95%	784	86%	817	89%
2006	2002	914	859	94%	779	85%	814	89%
2007	2003	906	864	95%	794	88%	815	90%
2008	2004	906*	867	95%	817	89%	836	92%
2009	2005	920	883	96%	804	87%	837	91%
2010	2006	922*	868	94%	793	86%	834	90%
2011	2007	887	843	95%	774	87%	805	91%
2012	2008	956*	896	94%	814	85%	847	89%
2013	2009	920	865	94%	780	85%	827	90%
2014	2010	929	870*	94%	782	84%	819	88%
2015	2011	916	873	95%	790	86%	828	90%
2016	2012	915*	861	94%	774	85%	809	88%
2017	2013	933	869	93%	807	86%	840	90%
2018	2014	938*	877	93%	784	84%		
2019	2015	938	864	92%	780	83%		
2020	2016	950	894	94%				
2021	2017	973	898	92%				
2022	2018	973	899	92%				

A Summary of Retention Data _First-Time First-Year Students among Cohorts Entering in ---

	2014	2015	2016	2017	2018	Grand Total
# of Initial Entering Cohort	938	938	950	973	973	4,772
# of Returning Students	876	864	894	898	899	4,431
Fall to Fall Retention Rate	93%	92%	94%	92%	92%	93%
Gender	2014	2015	2016	2017	2018	Grand Total
Female	95%	93%	93%	92%	93%	93%
Male	92%	91%	95%	92%	91%	92%
Citizenship	2014	2015	2016	2017	2018	Grand Total
Dual Citizenship (UF)	89%	94%	93%	90%	92%	91%
Nonresident Alien (NA)	98%	100%	96%	92%	94%	96%
Resident Alien (RA)	88%	100%	100%	86%	100%	94%
US	93%	91%	94%	93%	92%	93%
College	2014	2015	2016	2017	2018	Grand Total
College of Arts & Sciences	92%	92%	94%	92%	91%	92%
College of Engineering	95%	97%	98%	93%	95%	95%
Freeman College of Management	97%	87%	89%	95%	96%	93%
Race/Ethnicity	2014	2015	2016	2017	2018	Grand Total
American Indian or Alaska Native					100%	100%
Asian	93%	95%	94%	95%	91%	94%
Black/African American	93%	95%	94%	94%	92%	94%
Hispanic/Latino	92%	92%	98%	92%	95%	94%
Multiple Races	93%	95%	94%	94%	90%	93%
Non-Resident Alien	98%	100%	96%	92%	94%	96%
Unknown	100%	100%	100%	100%	100%	100%
White	93%	91%	94%	92%	92%	92%
First Generation	2014	2015	2016	2017	2018	Grand Total
No	93%	92%	94%	92%	93%	93%
Yes	93%	93%	93%	91%	90%	92%
Posse	2014	2015	2016	2017	2018	Grand Total
Not POSSE	93%	92%	94%	92%	92%	93%
POSSE	97%	97%	100%	97%	100%	98%
Pell	2014	2015	2016	2017	2018	Grand Total
No PELL	94%	92%	94%	93%	92%	93%
Pell	89%	93%	94%	90%	92%	92%

A Summary of Six Year Graduation Rates Among Cohorts Entering In---

1. College is based on information at time of first enrolled.

2. Pell grant recipients in graduation rate table are first-year cohort students who received a Pell grant during their undergraduate education.

	Fall 2009	Fall 2010	Fall 2011	Fall 2012	Fall 2013	Grand Total
# of Initial Entering Cohort	920	929	916	915	933	4,613
# of Graduated Students in Six Years	827	819	828	809	840	4,123
Six Year Graduation Rate	90%	88%	90%	88%	90%	89%
Gender	Fall 2009	Fall 2010	Fall 2011	Fall 2012	Fall 2013	Grand Total
Female	91%	89%	91%	91%	91%	91%
Male	89%	87%	90%	85%	89%	88%
Citizenship	Fall 2009	Fall 2010	Fall 2011	Fall 2012	Fall 2013	Grand Total
Dual Citizenship (UF)	96%	86%	76%	68%	93%	84%
Nonresident Alien (NA)	80%	94%	86%	86%	91%	88%
Resident Alien (RA)	100%	82%	92%	100%	89%	92%
U.S.	90%	88%	91%	89%	90%	90%
Enrolled College	Fall 2009	Fall 2010	Fall 2011	Fall 2012	Fall 2013	Grand Total
College of Arts & Sciences	90%	87%	90%	88%	89%	89%
College of Engineering	90%	91%	91%	89%	94%	91%
Freeman College of Management	91%	89%	92%	93%	88%	90%
Race/Ethnicity	Fall 2009	Fall 2010	Fall 2011	Fall 2012	Fall 2013	Grand Total
American Indian or Alaska Native	100%				100%	100%
Asian	92%	83%	86%	92%	90%	89%
Black or African American	84%	84%	92%	83%	87%	86%
Hispanic or Latino	90%	88%	87%	84%	85%	86%
Multiple Races	100%	83%	85%	88%	75%	86%
Non-Resident Alien	80%	94%	86%	86%	91%	88%
Unknown	92%	59%	100%	100%	67%	79%
White	90%	89%	91%	89%	91%	90%
First Generation	Fall 2009	Fall 2010	Fall 2011	Fall 2012	Fall 2013	Grand Total
No	90%	89%	91%	89%	90%	90%
Yes	92%	81%	86%	86%	89%	87%
PELLGrant	Fall 2009	Fall 2010	Fall 2011	Fall 2012	Fall 2013	Grand Total
No PELL	90%	88%	91%	88%	90%	89%
PELL	92%	87%	89%	89%	91%	90%

Athletes' Graduation Rate

Data resource for athletes' graduation rate: NCSS Graduation Success Rate website at web3.ncaa.org/aprsearch/gsrsearch

NCAA definition of student-athletes: Athletes received athletics aid from the school for any period of time during their entering year. [Note: Athletics aid is a grant, scholarship, tuition waiver or other assistance from a college or university that is awarded on the basis of a student's athletics ability.]

	Fall 2008	Fall 2009	Fall 2010	Fall 2011	Fall 2012	Grand Total
Athletes	88%	97%	86%	86%	93%	90%
Four-Class Average for Athletes	90%	91%	90%	89%	90%	91%

Post Graduation Activity Nine Months after Graduation

Data from Career Development Center Annual Postgraduate Report of Activity

* 96% of the class of 2018 were employed or in graduate school or other specific activities. A total of 4% were still seeking employment.

** The top 2018 employers with the most accepted offers include: Accenture, Atria, Bank of America Merrill Lynch, Brown Brothers Harriman, Clark Construction, Deloitte, Ernst & Young, ExxonMobil, HSBC, J.P. Morgan Chase & Co., Johnson & Johnson, Lockheed Martin, L'Oreal, MarketAxess, Marsh & McLennan Companies, Memorial Sloan Kettering Cancer Center, Morgan Advanced Materials, Nielsen, Northwestern Mutual, Oracle, PricewaterhouseCoopers, RSM, TD Securities, Wayfair, WeWork, and Yelp

*** Response rate: class of 2014 - 99% (822 out of 833), class of 2015 - 99% (858 out of 861), and class of 2016 - 99% (841 out of 846), class of 2017 - 99% (859 out of 867), class of 2018 - 97% (830 out of 852).

Placement	Employed Type/Grad Program	Class of 2014	Class of 2015	Class of 2016	Class of 2017***	Class of 2018***
Employed ** Total	Total	72%	75%	71%	74%	75%
In Graduate School	Additional Bachelors	0%				
	Business	6%	7%	3%	7%	9%
	Education	6%	9%	12%	11%	9%
	Engineering	10%	10%	19%	23%	23%
	Humanities and social sciences	14%	15%	20%	15%	17%
	Law	5%	10%	5%	5%	10%
	Medical	20%	23%	19%	17%	11%
	Other	10%	5%	4%		
	Ph.D.	20%				
	Post BAC/certification	3%				
In Graduate School Total	Total	18%	17%	17%	14%	17%
Both employed and in graduate school	Total	2%	2%	3%	3%	
Preparing for Graduate School	Total			5%	4%	1%
Serving in the U.S. Military	Total					1%
Volunteering and Other activity	Total	5%	3%	2%	2%	2%
Total Placement Rate*	Total	97%	97%	98%	97%	96%

Post Graduation Activity _Geographic Location

State/Region	Class of 2014	Class of 2015	Class of 2016	Class of 2017	Class of 2018
Connecticut	5%	6%	7%	7%	7%
Massachusetts	6%	7%	9%	9%	8%
Metro D.C. (MD/VA/DC)	12%	11%	10%	12%	10%
New Jersey	13%	14%	15%	14%	14%
New York	18%	17%	18%	17%	16%
Pennsylvania	21%	23%	17%	20%	22%
Other Northeast	3%	3%	4%	0%	4%
Total Northeast	78%	81%	80%	79%	81%
Region					
Midwest	8%	4%	6%	6%	6%
Southeast	4%	4%	4%	4%	3%
West	8%	8%	8%	8%	7%
International Cities	3%	3%	2%	3%	3%
Total Non-Northeast	22%	19%	20%	21%	19%

Post Graduation Activity _ Salary Offers Accepted for 2018 Graduates

* A total of 56% of the class respondents reported salary information.

College	Salary Range	Average Salary	Respondents
College of Arts & Sciences	\$20,000 - \$100,000	\$53,296	259
College of Engineering	\$33,500 - \$140,000	\$70,883	96
Freeman College of Management	\$28,500 - \$120,000	\$63,117	115
Engineering/Arts & Sciences	\$62,000 - \$130,000	\$87,375	4
Engineering/Management	\$50,000 - \$85,000	\$69,100	5
Grand Total	\$20,000 - \$140,000	\$59,628	479

Undergraduate Summer Research Participation in 2015-2019 by Discipline and/or Funding Source

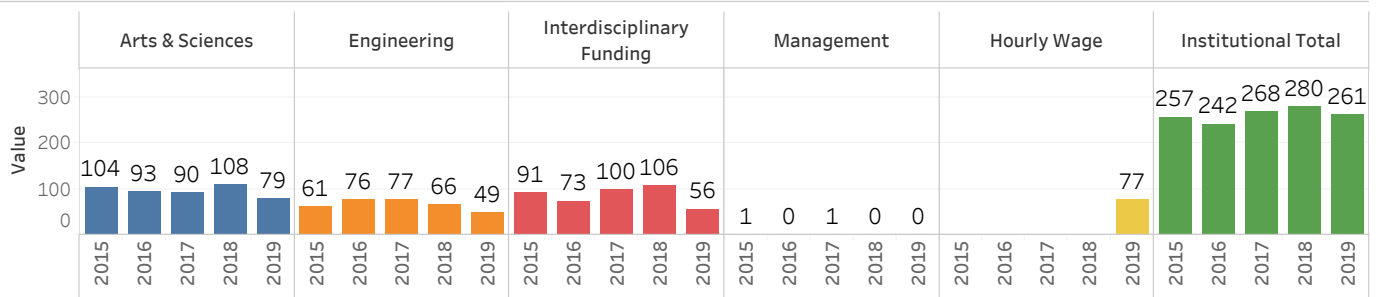
* L&T supported UG research long before 2017.

** Headcounts by discipline from 2015-2018 include students received both stipend and hourly wages. The data for discipline of wage earners in 2019 is unavailable.

	2015	2016	2017	2018	2019
Africana Studies	0	0	0	0	1
Animal Behavior	2	0	2	1	0
Art & Art History	0	2	0	2	1
Biology	32	31	21	32	25
Chemistry	25	21	20	20	21
Classics	1	1	0	0	0
Comparative Humanities	2	0	0	1	0
Economics	2	0	5	3	1
Education	2	5	5	4	2
English	3	3	3	1	0
Environmental Studies	0	0	0	3	0
Geography	0	0	0	3	1
Geology & Environmental Geosciences	8	4	7	3	6
History	1	2	2	4	0
International Relations	0	0	1	0	0
Languages, Cultures & Linguistics	2	0	0	0	2
Mathematics	0	0	3	4	2
Music	1	1	1	2	0
Neuroscience	1	0	1	1	1
Philosophy	0	1	2	1	1
Physics/ Astronomy	6	11	4	4	8
Religion	0	0	0	2	0
Psychology	15	9	10	11	4
Sociology & Anthropology	1	2	3	5	0
Theatre	0	0	0	0	2
Women's & Gender Studies	0	0	0	0	1
Management	1	0	1	0	0
Biomedical Engineering	5	10	7	7	1
Chemical Engineering	16	7	17	13	19
Civil Engineering	10	10	8	6	2
Electrical Engineering	7	5	15	7	11
Undeclared Engineering	4	12	9	16	1
Mechanical Engineering	10	14	12	7	11
Action Research/A&S	3	0	0	0	0
Action Research/ENGR	4	0	0	0	0
Action Research/MGMT	2	0	0	0	0
Bucknell Geisinger Research Initiative	8	4	0	0	0
Bucknell Institute for Public Policy	9	7	14	5	8
Bucknell Center for Sustainability & The Environment	12	3	8	9	5
Brawley Fund (Multicultural Students)	0	0	0	0	1
Cell Bio/ BIO Chem	0	0	0	1	0
Clare Boothe Luce	0	0	0	9	9
Jamie Hendry Fund	5	1	0	0	0
Humanities Center	0	0	7	13	0
Institute for Leadership in Sustainable Technology	11	13	12	9	0
Library & Information Technology*	0	0	3	9	5
McKenna Fund	7	8	5	5	0
Provost	1	3	1	0	0
STEM Scholars	29	34	28	27	27
Griot Institute	0	0	0	1	1
Computer Science	9	18	9	10	4
Institute for Leadership in Technology & Management	0	0	22	19	0
Hourly Wage**	0	0	0	0	77
Total	257	242	268	280	261

Undergraduate Summer Research Participation in 2015-2019 by College

	2015	2016	2017	2018	2019
Arts & Sciences	104	93	90	108	79
Engineering	61	76	77	66	49
Interdisciplinary Funding	91	73	100	106	56
Management	1	0	1	0	0
Hourly Wage					77
Institutional Total	257	242	268	280	261



Undergraduate Student Research for Credit

Course Title	Academic Year 2014-2015	Academic Year 2015-2016	Academic Year 2016-2017	Academic Year 2017-2018	Academic Year 2018-2019
Biomedical Engr Research	2	3	2	4	6
Chemical Engineering Research	2	4	7	7	9
Directed Research	2	1	4	0	2
Research	6	6	9	6	13
Undergraduate Research	207	206	235	160	193
Grand Total	219	220	257	177	223

Honors Theses by Academic Division and Gender in 2019 Data from Honors Council

Academic Division	Department	Female	Male	Grand Total
Arts & Humanities	Art & Art History	2		2
	English		2	2
	History	1		1
	Humanities		1	1
	Languages/Cultures/Linguistics	1		1
	Music	1		1
	Philosophy	1	1	2
	Religious Studies	1		1
	Spanish		1	1
	Theatre and Dance	1		1
	Total	8	5	13
Engineering	Chemical Engineering		1	1
	Computer Science	1	1	2
	Mechanical Engineering	1		1
	Total	2	2	4
Natural Sciences and Mathematics	Biology	3	3	6
	Geology & Environ Geosciences		2	2
	Interdisc Studies: Math & Econ	1		1
	Mathematics		3	3
	Total	4	8	12
Social Sciences	Economics	1		1
	Education	1		1
	Environ. Studies & Sciences		1	1
	Geography	1		1
	Psychology	1		1
	Sociology and Anthropology	2		2
	Total	6	1	7
Grand Total		20	16	36

FACULTY & STAFF

FACULTY & STAFF BUCKNELL UNIVERSITY

Full-Time Faculty Head Counts by Faculty Type and College as of Fall 2019

College	Tenured	Tenure Track	Visiting	Other	Replacement	Grand Total
College of Arts & Sciences	192	80	15	3	28	318
College of Engineering	44	23	4		3	74
Freeman College of Management	13	10	4	2	2	31
Grand Total	249	113	23	5	33	423

Full-Time Faculty Head Counts by Faculty Type and Gender as of Fall 2019

Gender	Tenured	Tenure Track	Visiting	Other	Replacement	Grand Total
F	95	54	12	3	13	177
M	154	59	11	2	20	246
Grand Total	249	113	23	5	33	423

Full-Time Faculty Head Counts by Faculty Type and Race/Ethnicity as of Fall 2019

Race/Ethnicity Description	Tenured	Tenure Track	Visiting	Other	Replacement	Grand Total
American Indian or Alaska Native	2					2
Asian	11	8			4	23
Black or African American	8	7				15
Hispanic or Latino	10	8	1		1	20
Multiple Races	3	4	1			8
Non-Resident Alien	3	17	3		3	26
Unknown		1				1
White	212	68	18	5	25	328
Grand Total	249	113	23	5	33	423

Full-Time Faculty Head Counts by Faculty Type and Recoded Race/Ethnicity as of Fall 2019

Recoded Race/Ethnicity	Tenured	Tenure Track	Visiting	Other	Replacement	Grand Total
Faculty of Color	34	27	2		5	68
Non-Resident Alien	3	17	3		3	26
Unknown		1				1
White	212	68	18	5	25	328
Grand Total	249	113	23	5	33	423

Full-Time Faculty Head Counts by Faculty Type and Rank as of Fall 2019

Current Rank	Tenured	Tenure Track	Visiting	Other	Replacement	Grand Total
Assistant Professor		108	19	1	33	161
Associate Professor	127	2		2		131
Professor	122	3	1	1		127
Instructor			3	1		4
Grand Total	249	113	23	5	33	423

Full-Time Faculty Head Counts by Faculty Type and Terminal Degree as of Fall 2019

Terminal Degree	Tenured	Tenure Track	Visiting	Other	Replacement	Grand Total
No		6	7	5	7	25
Yes	249	107	16		26	398
Grand Total	249	113	23	5	33	423

Full-Time Faculty Head Counts by Faculty Type, College, and Gender as of Fall 2019

College	Gender	Tenured	Tenure Track	Visiting	Other	Replacement	Grand Total
College of Arts & Sciences	F	79	42	9	3	10	143
	M	113	38	6		18	175
	Total	192	80	15	3	28	318
College of Engineering	F	11	7	1		2	21
	M	33	16	3		1	53
	Total	44	23	4		3	74
Freeman College of Management	F	5	5	2		1	13
	M	8	5	2	2	1	18
	Total	13	10	4	2	2	31
Grand Total		249	113	23	5	33	423

Full-Time Faculty Head Counts by Faculty Type, College, and Race/Ethnicity as of Fall 2019

College	Race/Ethnicity Description	Tenured	Tenure Track	Visiting	Other	Replacement	Grand Total
College of Arts & Sciences	American Indian or Alaska Native	1					1
	Asian	6	6			2	14
	Black or African American	8	7				15
	Hispanic or Latino	8	7			1	16
	Multiple Races	3	3	1			7
	Non-Resident Alien	3	10	1		2	16
	Unknown		1				1
	White	163	46	13	3	23	248
	Total	192	80	15	3	28	318
College of Engineering	American Indian or Alaska Native	1					1
	Asian	5	1				6
	Hispanic or Latino	2	1	1			4
	Multiple Races		1				1
	Non-Resident Alien		3	2		1	6
	White	36	17	1		2	56
	Total	44	23	4		3	74
Freeman College of Management	Asian		1			2	3
	Non-Resident Alien		4				4
	White	13	5	4	2		24
	Total	13	10	4	2	2	31
Grand Total		249	113	23	5	33	423

Full-Time Faculty Head Counts by Faculty Type, College, and Rank as of Fall 2019

College	Current Rank	Tenured	Tenure Track	Visiting	Other	Replacement	Grand Total
College of Arts & Sciences	Assistant Professor		78	11		28	117
	Associate Professor	98	1		1		100
	Instructor			3	1		4
	Professor	94	1	1	1		97
	Total	192	80	15	3	28	318
College of Engineering	Assistant Professor		22	4		3	29
	Associate Professor	22	1				23
	Professor	22					22
	Total	44	23	4		3	74
Freeman College of Management	Assistant Professor		8	4	1	2	15
	Associate Professor	7			1		8
	Professor	6	2				8
	Total	13	10	4	2	2	31
Grand Total		249	113	23	5	33	423

Full-Time Faculty Head Counts by Rank and Academic Division as of Fall 2019

	Assistant Professor	Associate Professor	Professor	Instructor	Grand Total
Arts & Sciences/Arts	10	11	7		28
Arts & Sciences/Humanities	37	33	32	1	103
Arts & Sciences/Natural Sciences	35	26	29	2	92
Arts & Sciences/Social Sciences	35	30	29	1	95
Engineering	29	23	22		74
Freeman College of Management	15	8	8		31
Grand Total	161	131	127	4	423

Full-Time Faculty Head Counts by Rank and Department as of Fall 2019

	Assistant Professor	Associate Professor	Professor	Instructor	Grand Total
Accounting and Financial Management	4	5	3		12
Africana Studies	2		1		3
Analytics & Operations Management	4		1		5
Art & Art History	2	3	3		8
Biology	7	10	6	1	24
Biomedical Engineering	1	3	1		5
Chemical Engineering	3	3	6		12
Chemistry	7	3	4		14
Civil and Environmental Engineering	4	5	7		16
Classics and Mediterranean Studies	2	2	2		6
Comparative Humanities Program			2		2
Computer Science	8	3	2		13
East Asian Studies	3	3	1		7
Economics	7	4	6		17
Education	5	5	2		12
Electrical and Computer Engineering	5	3	2		10
English	8	6	9	1	24
Environmental Studies and Sciences	2	2	2		6
Geography	1	2	2	1	6
Geology	2	2	4		8
History	3	4	3		10
International Relations	2	1	1		4
Languages, Cultures and Linguistics	8	10	5		23
Latin American Studies	1				1
Management and Organizations	2	2	3		7
Markets, Innovation, and Design	5	1	1		7
Mathematics	14	5	9	1	29
Mechanical Engineering	8	6	4		18
Music	10	4	2		16
Philosophy	3	2	3		8
Physics and Astronomy	5	6	6		17
Political Science	5	7	2		14
Psychology	5	3	10		18
Religion	2	2	4		8
Sociology and Anthropology	5	5	4		14
Spanish	3	4	2		9
Theatre and Dance	1	4	2		7
Women's and Gender Studies	2	1			3
Grand Total	161	131	127	4	423

**Full-Time Faculty Head Counts by Rank, College, Tenure Status, and Gender as of Fall 2019
(Excluding Replacement Faculty)**

			Assistant Professor	Associate Professor	Professor	Instructor	Grand Total
College of Arts & Sciences	Tenure Track	F	41	1			42
		M	37		1		38
	Tenured	F		46	33		79
		M		52	61		113
	Visiting	F	6			3	9
		M	5		1		6
	Other	F		1	1	1	3
Total			89	100	97	4	290
College of Engineering	Tenure Track	F	7				7
		M	15	1			16
	Tenured	F		6	5		11
		M		16	17		33
	Visiting	F	1				1
		M	3				3
	Total			26	23	22	
Freeman College of Management	Tenure Track	F	5				5
		M	3		2		5
	Tenured	F		3	2		5
		M		4	4		8
	Visiting	F	2				2
		M	2				2
	Other	M	1	1			2
Total			13	8	8		29
Grand Total			128	131	127	4	390

**Full-Time Faculty Head Counts by Rank, College, and Race/Ethnicity as of Fall 2019
(Excluding Replacement Faculty)**

College	Race/Ethnicity Description	Assistant Professor	Associate Professor	Professor	Instructor	Grand Total
College of Arts & Sciences	American Indian or Alaska Native			1		1
	Asian	6	5	1		12
	Black or African American	7	4	4		15
	Hispanic or Latino	7	3	5		15
	Multiple Races	3	1	2	1	7
	Non-Resident Alien	11	1	2		14
	Unknown	1				1
	White	54	86	82	3	225
Total		89	100	97	4	290
College of Engineering	American Indian or Alaska Native		1			1
	Asian	1	3	2		6
	Hispanic or Latino	2	1	1		4
	Multiple Races	1				1
	Non-Resident Alien	5				5
	White	17	18	19		54
	Total		26	23	22	
Freeman College of Management	Asian			1		1
	Non-Resident Alien	4				4
	White	9	8	7		24
	Total		13	8	8	
Grand Total		128	131	127	4	390

**Faculty Head Counts by Rank, College, and Terminal Degree as of Fall 2019
(Excluding Replacement Faculty)**

		Assistant Professor	Associate Professor	Professor	Instructor	Grand Total
College of Arts & Sciences	No	5	1	1	3	10
	Yes	84	99	96	1	280
	Total	89	100	97	4	290
College of Engineering	No	4				4
	Yes	22	23	22		67
	Total	26	23	22		71
Freeman College of Management	No	3	1			4
	Yes	10	7	8		25
	Total	13	8	8		29
Grand Total		128	131	127	4	390

Full-Time Faculty Head Counts by Academic Division from 2015 to 2019
(Excluding Replacement Faculty)

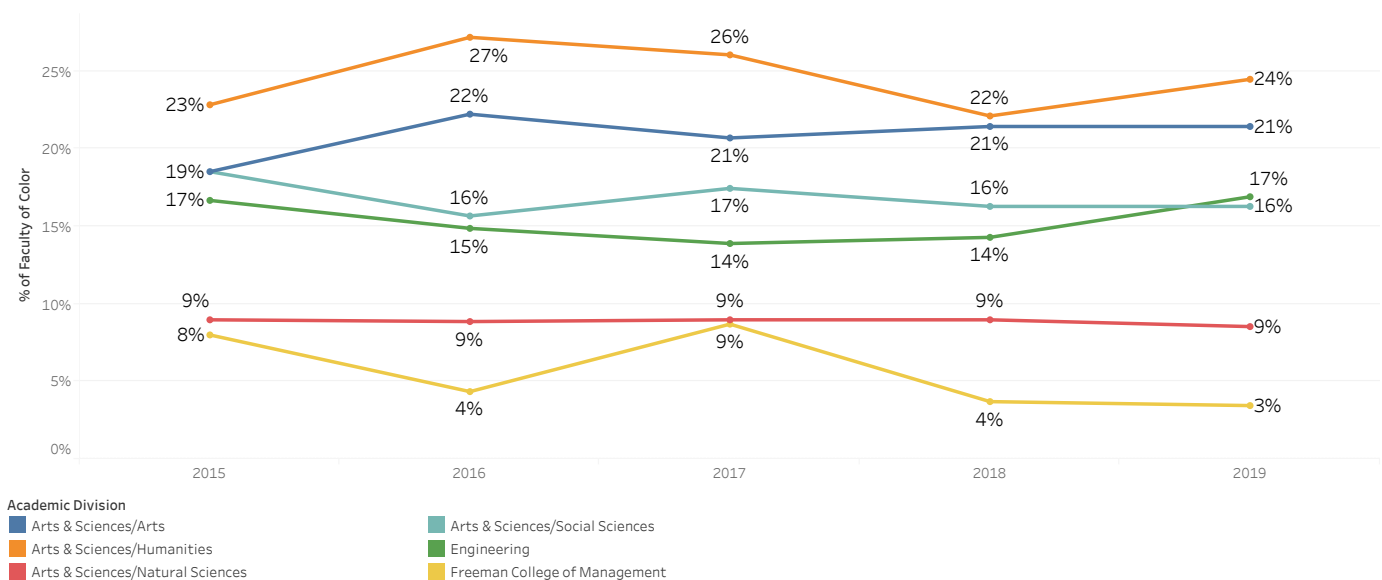
Academic Division	2015	2016	2017	2018	2019	Grand Total
Arts & Sciences/Arts	27	27	29	28	28	139
Arts & Sciences/Humanities	92	92	96	95	94	469
Arts & Sciences/Natural Sciences	78	79	78	78	82	395
Arts & Sciences/Social Sciences	81	83	86	86	86	422
Engineering	72	74	72	70	71	359
Freeman College of Management	25	23	23	27	29	127
Grand Total	375	378	384	384	390	1,911

Full-Time Faculty of Color Head Counts by Academic Division from 2015 to 2019
(Excluding Replacement Faculty)

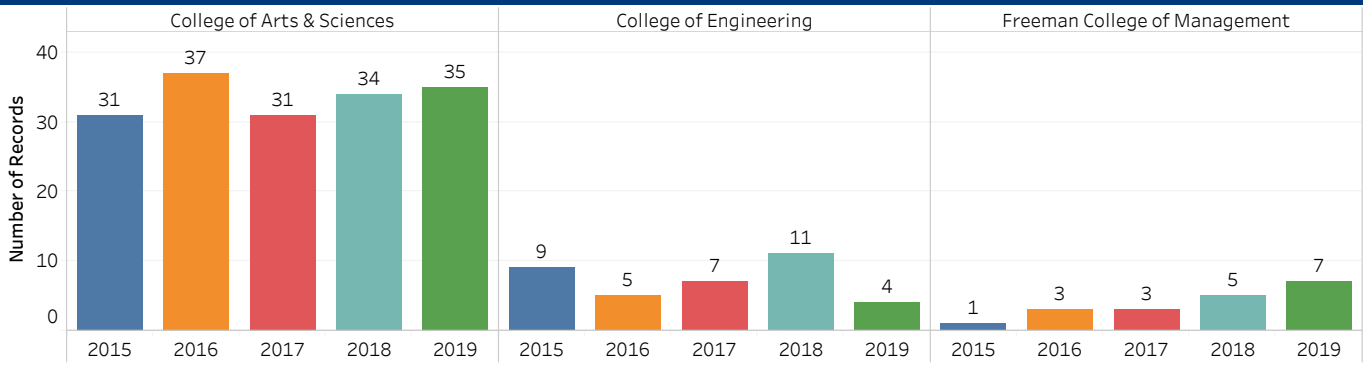
Academic Division	2015	2016	2017	2018	2019	Grand Total
Arts & Sciences/Arts	5	6	6	6	6	29
Arts & Sciences/Humanities	21	25	25	21	23	115
Arts & Sciences/Natural Sciences	7	7	7	7	7	35
Arts & Sciences/Social Sciences	15	13	15	14	14	71
Engineering	12	11	10	10	12	55
Freeman College of Management	2	1	2	1	1	7
Grand Total	62	63	65	59	63	312

% of Full-Time Faculty of Color by Academic Division from 2015 to 2019
(Excluding Replacement Faculty)

Academic Division	2015	2016	2017	2018	2019	Grand Total
Arts & Sciences/Arts	19%	22%	21%	21%	21%	21%
Arts & Sciences/Humanities	23%	27%	26%	22%	24%	25%
Arts & Sciences/Natural Sciences	9%	9%	9%	9%	9%	9%
Arts & Sciences/Social Sciences	19%	16%	17%	16%	16%	17%
Engineering	17%	15%	14%	14%	17%	15%
Freeman College of Management	8%	4%	9%	4%	3%	6%
Grand Total	17%	17%	17%	15%	16%	16%



Newly Hired Faculty Head Counts by College from 2015 to 2019



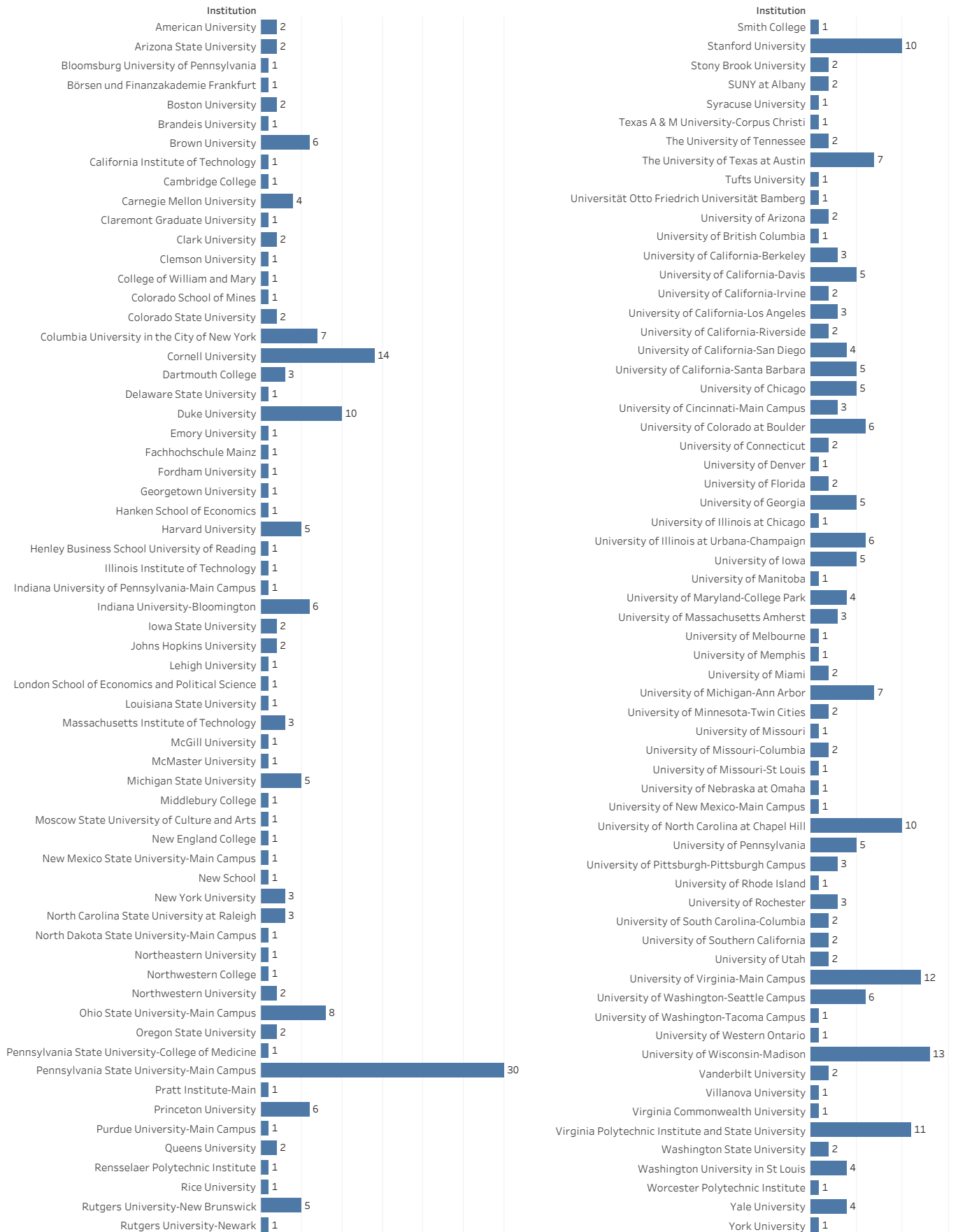
Newly Hired Faculty Head Counts by College, Race/Ethnicity, and Gender from 2015 to 2019

College	Recorded Race/Ethnicity	Gender	Year Date					Grand Total
			2015	2016	2017	2018	2019	
College of Arts & Sciences	Faculty of Color	F	5	5	7	3	3	23
		M	7	5	3	1	5	21
	Non-Resident Alien	F	3	2	3	1	1	10
		M	2	4	2	4	1	13
	White	F	9	10	8	12	9	48
		M	4	10	8	7	16	45
Unknown	F	1	1		3		5	
	M				3		3	
College of Engineering	Faculty of Color	F	1					1
		M	2		1	1	1	5
	Non-Resident Alien	F			2		1	3
		M	3			3	1	7
	White	F	2	2		2		6
		M	1	3	4	2	1	11
Unknown	F				1		1	
	M				2		2	
Freeman College of Management	Faculty of Color	F	1	1		1		3
		M		1			2	3
	Non-Resident Alien	F			1		1	2
		M					1	1
	White	F				1	1	2
		M		1	2	1	2	6
Unknown	F				2		2	
	M							
Grand Total			41	45	41	50	46	223

Newly Hired Faculty Head Counts by College, Rank, Tenure Status, and Gender from 2015 to 2019

College	Current Rank	Tenure Desc	Gender	Year Date					Grand Total
				2015	2016	2017	2018	2019	
College of Arts & Sciences	Assistant Professor	Non-Tenured	F	9	9	11	9	6	44
			M	4	10	7	8	16	45
		On Track	F	5	8	5	9	5	32
			M	5	6	6	7	5	29
	Associate Professor	On Track	F	1				1	2
			M	2	1				3
		Tenured	M		1				1
			M					1	1
	Professor	Non-Tenured	M						1
			F	1					1
Instructor	Non-Tenured	F		1		1	1	3	
		M	2	1	2			4	
Other	Non-Tenured	F	2					3	
		M	2	1				3	
College of Engineering	Assistant Professor	Non-Tenured	F	2	2	2	2	1	9
			M	1	2	3	5	1	12
		On Track	F	1			1		2
			M	4	1	2	3	1	11
	Associate Professor	On Track	M					1	1
	Professor	Non-Tenured	M	1					1
Freeman College of Management	Assistant Professor	Non-Tenured	F	1			3	1	5
			M		2	2		3	7
		On Track	F			1	1	1	3
			M					1	1
	Associate Professor	Non-Tenured	F		1				1
	Professor	On Track	M				1	1	2
Grand Total				41	45	41	50	46	223

Full-Time Faculty Highest Degrees Earned Conferring Institutions Fall 2019



Full-Time Faculty Salaries
Average Annualized Salary 2010-11 through 2019-20
(Excluding Replacement Faculty)

Year	Rank	# Men	# Women	Total	Men Salary	Women Salary	Average Salary
2010-11	Professor	60	24	84	\$114,422	\$102,085	\$110,897
	Associate Professor	86	54	140	\$83,217	\$82,021	\$82,756
	Assistant Professor	66	62	128	\$74,608	\$73,453	\$74,048
	Instructor	1	0	1			
	Other	0	1	1			
2011-12	Professor	56	28	84	\$114,990	\$100,945	\$110,308
	Associate Professor	89	57	146	\$85,175	\$82,527	\$84,141
	Assistant Professor	67	61	128	\$73,227	\$72,851	\$73,048
2012-13	Professor	65	30	95	\$114,634	\$102,631	\$110,843
	Associate Professor	86	60	146	\$87,328	\$83,818	\$85,885
	Assistant Professor	64	55	119	\$75,753	\$74,666	\$75,251
	Instructor	0	1	1			
2013-14	Professor	72	30	102	\$117,811	\$108,371	\$115,034
	Associate Professor	87	62	149	\$93,342	\$89,180	\$91,610
	Assistant Professor	64	55	119	\$78,951	\$76,248	\$77,702
2014-15	Professor	71	32	103	\$120,633	\$110,821	\$117,584
	Associate Professor	92	67	159	\$94,657	\$90,117	\$92,744
	Assistant Professor	57	53	110	\$80,160	\$77,425	\$78,842
2015-16	Professor	72	33	105	\$123,689	\$116,208	\$121,338
	Associate Professor	90	69	159	\$98,602	\$94,521	\$96,831
	Assistant Professor	58	48	106	\$81,412	\$79,037	\$80,336
	Instructor & Other	2	3	5	\$62,430	\$52,680	\$56,580
2016-17	Professor	79	35	114	\$126,333	\$118,451	\$123,913
	Associate Professor	87	68	155	\$99,966	\$97,323	\$98,807
	Assistant Professor	56	49	105	\$80,053	\$77,524	\$78,873
	Instructor & Other	2	2	4	\$64,069	\$56,534	\$60,301
2017-18	Professor	83	37	120	\$126,285	\$120,052	\$124,364
	Associate Professor	85	60	145	\$102,365	\$100,795	\$101,715
	Assistant Professor	58	58	116	\$80,124	\$81,053	\$80,588
	Instructor & Other	1	2	3		\$57,715	\$60,393
2018-19	Professor	86	40	126	\$128,545	\$122,107	\$126,501
	Associate Professor	73	56	129	\$106,103	\$102,459	\$104,521
	Assistant Professor	63	64	127	\$83,032	\$84,369	\$83,706
	Instructor & Other	1	1	2			\$67,394
2019-20	Professor	86	41	127	\$129,968	\$122,857	\$127,672
	Associate Professor	74	57	131	\$103,476	\$101,820	\$102,755
	Assistant Professor	66	62	128	\$86,673	\$86,917	\$86,791
	Instructor & Other	0	4	4		\$64,858	\$64,858

**Staff Head Counts by Gender
FT Full-Time, PT Part-Time**

	2015			2016			2017			2018			2019			Grand Total
	FT	PT	Total	FT	PT	Total	FT	PT	Total	FT	PT	Total	FT	PT	Total	
Female	475	17	492	490	18	508	507	17	524	495	21	516	514	20	534	2,574
Male	396	2	398	412	2	414	417	4	421	420	7	427	406	6	412	2,072
Grand Total	871	19	890	902	20	922	924	21	945	915	28	943	920	26	946	4,646

Staff Head Counts by Race/Ethnicity

	2015			2016			2017			2018			2019			Grand Total
	FT	PT	Total	FT	PT	Total	FT	PT	Total	FT	PT	Total	FT	PT	Total	
American Indian or Alaska Native	3		3	3		3	2		2	2		2	1		1	11
Asian	12		12	12	1	13	10	1	11	10		10	11		11	57
Black or African American	25	2	27	25		25	24	1	25	27	1	28	26	1	27	132
Hispanic or Latino	9	1	10	14		14	19		19	20	1	21	21		21	85
Multiple Races	7	1	8	10		10	11		11	11		11				40
Non-Resident Alien	5		5	2		2	2		2	3		3	3		3	15
Two or More Races													8		8	8
Unknown	9		9	11		11	24		24	40	2	42	21		21	107
White	801	15	816	825	19	844	832	19	851	802	24	826	829	25	854	4,191
Grand Total	871	19	890	902	20	922	924	21	945	915	28	943	920	26	946	4,646

Staff Head Counts by Position Type

	2015			2016			2017			2018			2019			Grand Total
	FT	PT	Total	FT	PT	Total	FT	PT	Total	FT	PT	Total	FT	PT	Total	
Exempt	479	4	483	490	4	494	508	6	514	507	6	513	519	5	524	2,528
Non-exempt	392	15	407	412	16	428	416	15	431	408	22	430	401	21	422	2,118
Grand Total	871	19	890	902	20	922	924	21	945	915	28	943	920	26	946	4,646

Staff Head Counts by Gender, Race/Ethnicity, and Position Type

		2015			2016			2017			2018			2019			Grand Total	
		FT	PT	Total	FT	PT	Total	FT	PT	Total	FT	PT	Total	FT	PT	Total		
Female	American Indian or Alaska Native Exempt	1		1	1		1	1		1	1		1	1		1	5	
	Asian	Exempt	6		6	6	1	7	4	1	5	3		3	4		4	25
		Non-exempt	2		2	2		2	2		2	2		2	2		2	10
	Black or African American	Exempt	8	1	9	8		8	9		9	11		11	13		13	50
		Non-exempt	2		2	2		2	2		2	1		1	1		1	8
	Hispanic or Latino	Exempt	1	1	2	4		4	9		9	9	1	10	8		8	33
		Non-exempt	3		3	3		3	3		3	3		3	4		4	16
	Multiple Races	Exempt	2		2	2		2	3		3	4		4				11
		Non-exempt	3	1	4	6		6	4		4	4		4				18
	Non-Resident Alien	Exempt	3		3	2		2	2		2	2		2	3		3	12
	Two or More Races	Exempt													3		3	3
		Non-exempt													3		3	3
	Unknown	Exempt	2		2	4		4	9		9	13		13	8		8	36
		Non-exempt	2		2	3		3	5		5	6	2	8	4		4	22
White	Exempt	225	2	227	230	2	232	229	3	232	220	3	223	242	4	246	1,160	
	Non-exempt	215	12	227	217	15	232	225	13	238	216	15	231	218	16	234	1,162	
Male	American Indian or Alaska Native Exempt	2		2	2		2	1		1	1		1				6	
	Asian	4		4	4		4	4		4	5		5	5		5	22	
	Black or African American	Exempt	15		15	14		14	12	1	13	14	1	15	11	1	12	69
		Non-exempt		1	1	1		1	1		1	1		1	1		1	5
	Hispanic or Latino	Exempt	4		4	6		6	6		6	6		6	7		7	29
		Non-exempt	1		1	1		1	1		1	2		2	2		2	7
	Multiple Races	Exempt	1		1	1		1	2		2	1		1				5
		Non-exempt	1		1	1		1	2		2	2		2				6
	Non-Resident Alien	Exempt	2		2							1		1				3
	Two or More Races	Non-exempt													2		2	2
		Exempt	1		1	1		1	6		6	12		12	4		4	24
	Unknown	Non-exempt	4		4	3		3	4		4	9		9	5		5	25
		Exempt	202		202	205	1	206	211	1	212	204	1	205	210		210	1,035
	White	Non-exempt	159	1	160	173	1	174	167	2	169	162	5	167	159	5	164	834
Grand Total		871	19	890	902	20	922	924	21	945	915	28	943	920	26	946	4,646	

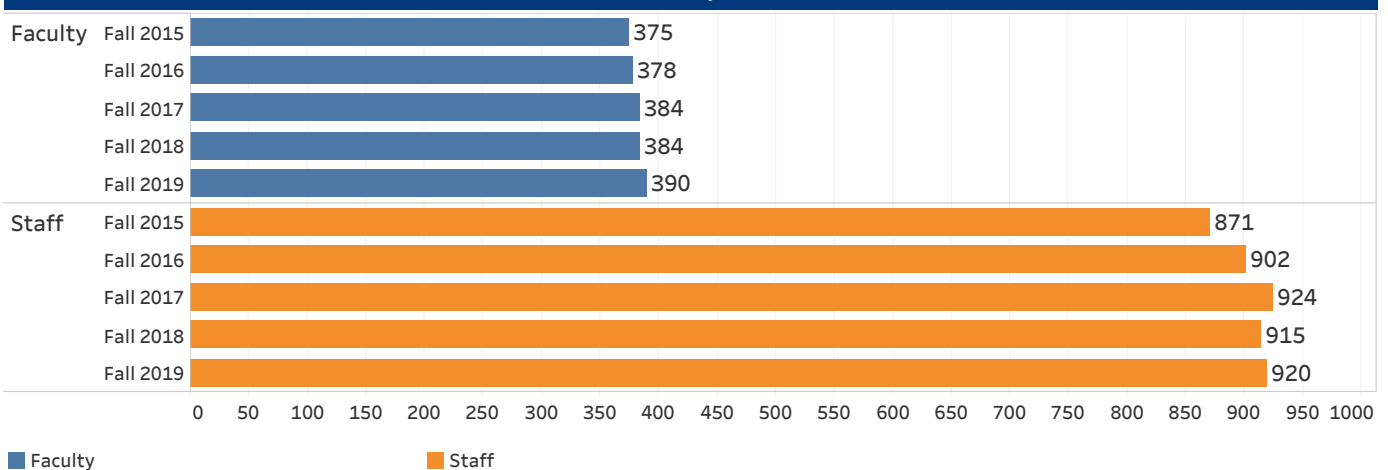
Number of Staff by Employment Status and Occupational Category (Fall 2019)

Occupational category	# Full-Time Staff	# Part-Time Staff	# FTE staff
Postsecondary Teachers	423	18	429
Instructional Staff	423	18	429
Instruction (Non Tenured Faculty)	33	18	39
Exclusively credit (Non Tenured Faculty)	33	18	39
Exclusively not-for-credit	0	0	0
Combined credit/not-for-credit	0	0	0
Instruction/research/public service (Tenure track faculty)	390	0	390
Research	0	0	0
Public Service	0	0	0
Library and Instructional Support Occupations	54	0	54
Librarians, Curators, and Archivists	13	0	13
Archivists, Curators, and Museum Technicians	0	0	0
Librarians	7	0	7
Library Technicians	6	0	6
Other Teachers and Instructional Support Staff	41	0	41
Management Occupations	82	0	82
Business and Financial Operations Occupations	145	0	145
Computer, Engineering, and Science Occupations	97	0	97
Community Service, Legal, Arts, and Media Occupations	120	7	122
Healthcare Practitioners and Technical Occupations	10	1	10
Service Occupations	182	3	183
Sales and Related Occupations	0	0	0
Office and Administrative Support Occupations	155	15	160
Natural Resources, Construction, and Maintenance Occupations	53	0	53
Production, Transportation, and Material Moving Occupations	22	0	22
Total number of staff	1,343	44	1,358

Staff Head Counts by Primary Function and Employment Status Adjunct faculty are counted as part-time faculty

		Faculty	Staff	Grand Total
Fall 2015	Full Time	375	871	1,246
	Part Time	11	19	30
	Replacement	25	0	25
Fall 2016	Full Time	378	902	1,280
	Part Time	16	20	36
	Replacement	32	0	32
Fall 2017	Full Time	384	924	1,308
	Part Time	14	21	35
	Replacement	28	0	28
Fall 2018	Full Time	384	915	1,299
	Part Time	16	28	44
	Replacement	28	0	28
Fall 2019	Full Time	390	920	1,310
	Part Time	18	26	44
	Replacement	33	0	33

Number of Full-Time Faculty and Staff in Five Years



FINANCE

Tuition and Fees History								
Undergraduate	2012-13	2013-14	2014-15	2015-16	2016-17	2017-18	2018-19	2019-20
Tuition	\$45,132	\$46,646	\$48,234	\$49,878	\$51,676	\$53,692	\$55,788	\$57,882
Fees	\$246	\$256	\$264	\$274	\$284	\$294	\$304	\$314
Total Tuition & Fees	\$45,378	\$46,902	\$48,498	\$50,152	\$51,960	\$53,986	\$56,092	\$58,196
Board	\$4,482	\$4,636	\$4,794	\$4,766	\$4,938	\$5,130	\$5,330	\$5,530
Room Rate (Double)	\$6,330	\$6,622	\$6,848	\$7,450	\$7,718	\$8,020	\$8,332	\$8,644
Total Room&Board	\$10,812	\$11,258	\$11,642	\$12,216	\$12,656	\$13,150	\$13,662	\$14,174
Tuition, Fees, Room & Board (Comprehensive Fee)	\$56,190	\$58,160	\$60,140	\$62,368	\$64,616	\$67,136	\$69,754	\$72,370
Books and Supplies	\$900	\$900	\$900	\$900	\$900	\$900	\$900	\$900
Single course Rate	\$4,955	\$5,121	\$5,295	\$5,475	\$5,672	\$5,893	\$6,123	\$6,353
Full-time Graduate Tuition, Annual	\$19,820	\$20,484	\$21,180	\$21,900	\$22,688	\$23,568	\$24,496	\$25,412

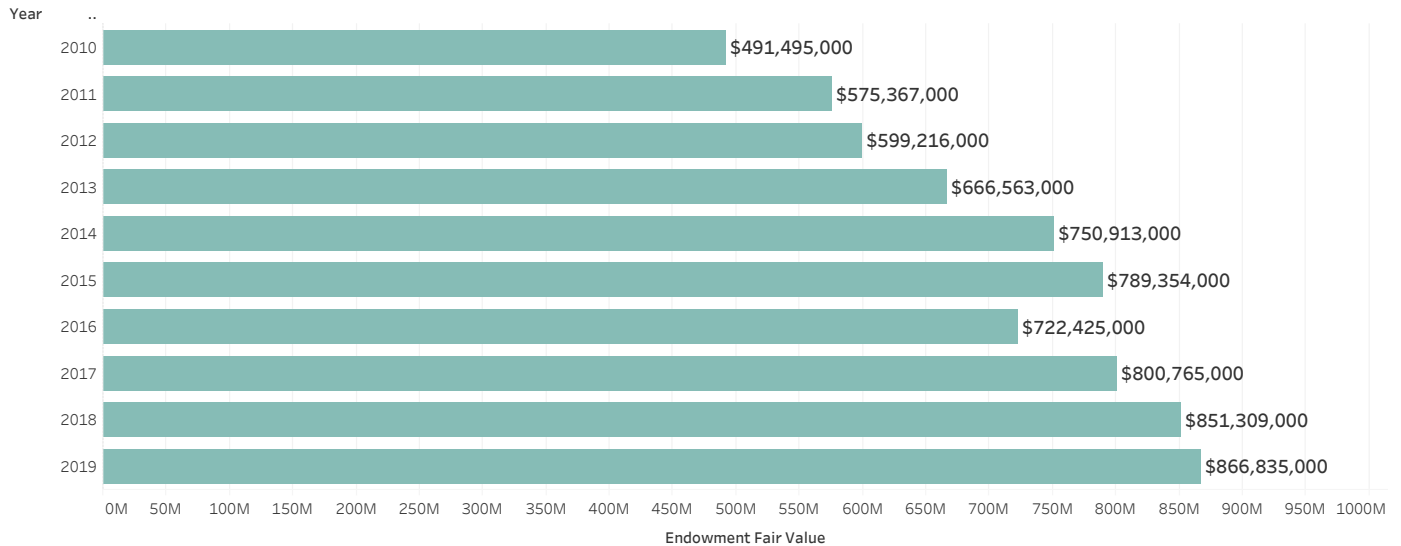
Endowment Fair Value Peer Comparisons 2018-19						
Derived from Audited Financial Statements						
Fiscal year ends June 30						
Rank	Institution	June 30, 2017	June 30, 2018	% Change (2017-18)	June 30, 2019	% Change (2018-19)
1	Dartmouth	\$4,956,494,000	\$5,494,204,000	10.8%	\$5,731,322,000	4.3%
2	Richmond	\$2,395,074,000	\$2,506,098,000	4.6%	\$2,513,209,000	0.3%
3	Wake Forest	\$1,205,323,000	\$1,329,255,000	10.3%	\$1,375,398,000	3.5%
4	Lehigh	\$1,227,986,000	\$1,301,639,000	6.0%	\$1,354,789,000	4.1%
5	Middlebury	\$1,073,976,000	\$1,124,144,000	4.7%	\$1,157,786,000	3.0%
6	William & Mary	\$898,700,000	\$962,200,000	7.1%	\$1,023,000,000	6.3%
7	Colgate	\$883,351,000	\$934,594,000	5.8%	\$949,230,000	1.6%
8	Bucknell	\$800,765,000	\$851,309,000	6.3%	\$866,835,000	1.8%
9	Davidson	\$716,203,023	\$805,949,257	12.5%	\$865,118,894	7.3%
10	Lafayette	\$833,069,000	\$870,742,000	4.5%	\$861,784,000	-1.0%
11	Holy Cross	\$748,948,000	\$783,207,000	4.6%	\$785,852,000	0.3%
12	Villanova	\$640,428,000	\$710,592,000	11.0%	\$743,061,000	4.6%
13	Furman	\$661,046,233	\$702,854,866	6.3%	\$694,271,736	-1.2%
14	Trinity	\$584,499,394	\$621,190,886	6.3%	\$640,845,506	3.2%
Average	Institutions	\$1,258,990,189	\$1,356,998,501	7.8%	\$1,397,321,581	3.0%

Endowment Fair Value and Spending per Student

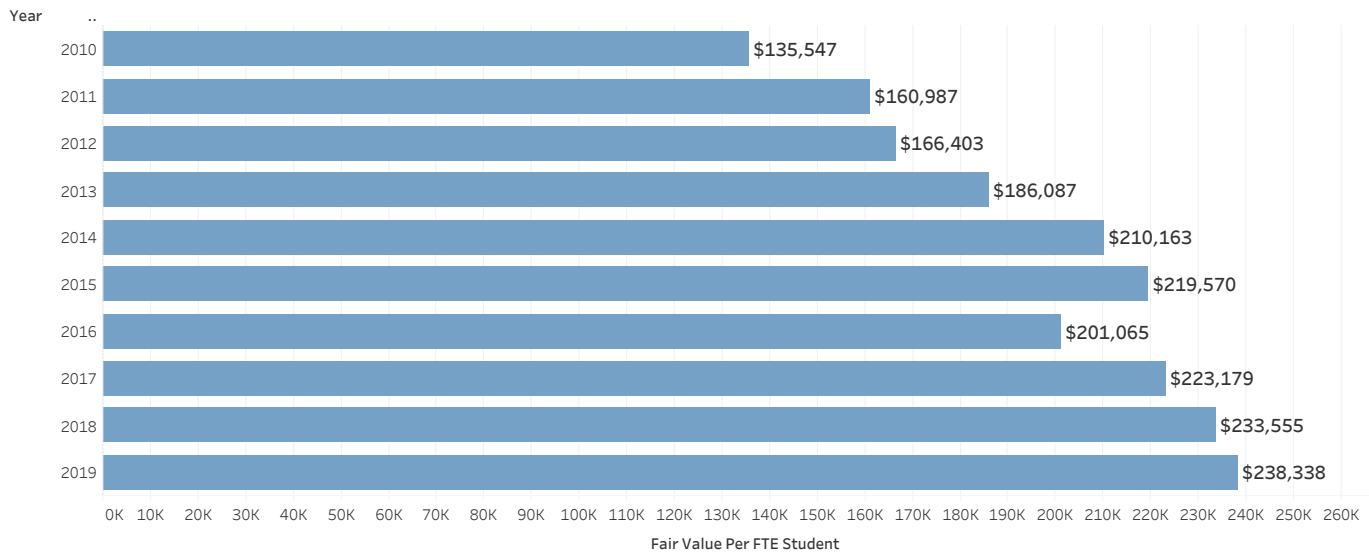
Amounts derived from Audited Financial Statements then divided by student FTE

Year (as of June 30)	Endowment Fair Value	Fair Value Per FTE Student	Spending for Year	Spending from Endowment per FTE Student
2010	\$491,495,000	\$135,547	\$27,682,000	\$7,634
2011	\$575,367,000	\$160,987	\$28,646,000	\$8,015
2012	\$599,216,000	\$166,403	\$28,646,000	\$7,955
2013	\$666,563,000	\$186,087	\$31,932,000	\$8,915
2014	\$750,913,000	\$210,163	\$34,935,000	\$9,777
2015	\$789,354,000	\$219,570	\$36,857,000	\$10,252
2016	\$722,425,000	\$201,065	\$41,527,000	\$11,558
2017	\$800,765,000	\$223,179	\$42,161,000	\$11,751
2018	\$851,309,000	\$233,555	\$42,987,000	\$11,793
2019	\$866,835,000	\$238,338	\$44,149,000	\$12,139

Endowment Fair Value from 2010 to 2019



Endowment Fair Value per FTE Student from 2010 to 2019



Operating Revenues (in Thousands)

From Audited Financial Statements

Year (as of June 30)	Net Students Tuition and Fees	Auxiliary Services	Private Gifts and Grants	Government Grants and Contracts	Investment Income	Other Income	Total Operating Revenues
2010	\$99,510	\$29,046	\$9,589	\$5,026	\$29,562	\$4,755	\$177,488
2011	\$103,120	\$29,991	\$11,034	\$4,795	\$29,974	\$5,586	\$184,500
2012	\$107,738	\$30,848	\$12,350	\$3,190	\$29,480	\$5,615	\$189,221
2013	\$111,499	\$31,518	\$12,104	\$3,122	\$32,431	\$5,989	\$196,663
2014	\$115,421	\$32,905	\$12,351	\$3,887	\$35,551	\$6,274	\$206,389
2015	\$119,467	\$33,378	\$13,012	\$3,989	\$37,404	\$6,006	\$213,256
2016	\$121,848	\$36,414	\$12,220	\$4,031	\$42,279	\$5,689	\$222,481
2017	\$126,598	\$37,299	\$11,168	\$3,714	\$43,397	\$7,965	\$230,141
2018	\$132,465	\$39,045	\$12,486	\$4,234	\$44,355	\$7,963	\$240,548
2019	\$137,957	\$40,671	\$12,479	\$3,804	\$46,862	\$5,447	\$247,220

Operating Expenses (in Thousands)

From Audited Financial Statements

Note: Net periodic benefit costs changed to be reported in non-operating activities instead of operating activities in 2019

Year (as of June 30)	Instruction	Research and Public Service	Academic Support	Student Services	Institutional Support	Auxiliary Services	Total Operating Expenses
2010	\$63,057	\$3,377	\$21,556	\$30,556	\$27,458	\$26,659	\$172,663
2011	\$63,981	\$3,454	\$21,824	\$30,891	\$26,882	\$25,820	\$172,852
2012	\$66,250	\$2,616	\$23,660	\$33,289	\$26,994	\$26,447	\$179,256
2013	\$70,194	\$2,620	\$26,793	\$35,654	\$33,320	\$26,510	\$195,091
2014	\$73,338	\$3,403	\$26,871	\$36,242	\$33,854	\$27,072	\$200,780
2015	\$75,899	\$3,188	\$27,788	\$37,984	\$33,960	\$26,818	\$205,637
2016	\$80,435	\$3,164	\$29,759	\$38,494	\$36,452	\$30,933	\$219,237
2017	\$85,707	\$2,880	\$29,465	\$42,776	\$38,156	\$32,849	\$231,833
2018	\$87,189	\$3,195	\$31,437	\$45,420	\$38,972	\$35,040	\$241,253
2019	\$87,809	\$3,479	\$30,589	\$45,966	\$37,421	\$34,198	\$239,462

Net Assets (in Thousands)

From Audited Financial Statements

Year (as of June 30)	Unrestricted	With Restriction	Total Net Assets
2010	\$323,221	\$394,955	\$718,176
2011	\$369,140	\$468,754	\$837,894
2012	\$357,717	\$451,241	\$808,958
2013	\$393,108	\$490,191	\$883,299
2014	\$430,600	\$545,659	\$976,259
2015	\$423,523	\$545,875	\$969,398
2016	\$388,183	\$530,648	\$918,831
2017	\$427,004	\$609,946	\$1,036,950
2018	\$460,239	\$650,145	\$1,110,384
2019	\$464,606	\$668,412	\$1,133,018

Institutional Grants and Scholarships for Undergraduate Students*

(in thousands except the percentages and average student indebtedness at graduation)

*Reported to the Common Data Set and U.S. News as estimates.

** Actual discount rate.

Year	Freshman Tuition Discount Rate**	Merit Athletic Awards	Average Need-based Award	Average Merit-based Award	Average Merit Athletic Award	Average % of Financial Need Met	Average Student Indebtedness at Graduation
2010-11	30.3%	\$563	\$26	\$12	\$9	95%	\$18,900
2011-12	30.4%	\$691	\$26	\$13	\$9	95%	\$20,149
2012-13	29.1%	\$773	\$27	\$14	\$10	95%	\$21,163
2013-14	31.7%	\$1,979	\$29	\$14	\$29	95%	\$22,500
2014-15	30.0%	\$3,232	\$30	\$14	\$33	91%	\$22,500
2015-16	32.0%	\$5,080	\$32	\$12	\$36	91%	\$22,500
2016-17	26.5%	\$7,680	\$33	\$12	\$37	91%	\$22,600
2017-18	31.0%	\$8,241	\$33	\$12	\$38	91%	\$22,600
2018-19	29.1%	\$8,989	\$34	\$14	\$40	92%	\$21,245
2019-20	30.1%	\$9,625	\$35	\$14	\$40	92%	\$21,100

Financial Assistance

From Financial Statements.

* Discount rate includes undergraduate and graduate student revenue and scholarship awards.

Year	Pell Grants	Other Federal Grants	State Grants	Institutional Grants (Funded)	Institutional Grants (Unfunded)	Total Student Grants	Allowances-Scholarships Applied to Tuition and Fees	Tuition and Fees	Total Discount Rate*
2015	\$1,655,000	\$256,000	\$806,000	\$14,796,000	\$36,360,000	\$53,873,000	\$51,412,000	\$170,879,000	30.09%
2016	\$1,725,000	\$264,000	\$842,000	\$14,455,000	\$40,046,000	\$57,332,000	\$54,765,000	\$176,613,000	31.01%
2017	\$1,547,000	\$236,000	\$744,000	\$13,883,000	\$42,059,000	\$58,469,000	\$56,178,000	\$182,776,000	30.74%
2018	\$1,760,000	\$319,000	\$701,000	\$15,431,000	\$43,702,000	\$61,913,000	\$59,452,000	\$191,917,000	30.98%
2019	\$1,745,000	\$380,000	\$697,000	\$14,728,000	\$46,754,000	\$64,304,000	\$61,862,000	\$199,819,000	30.96%

Outright Giving for Current Operations as reported in the VSE (in Thousands)

(VSE: Voluntary Support for Education survey)

Note: Donor advised funds were reported under Other Organizations instead of under Foundation Gifts in 2019.

Year (as of June 30)	Alumni	Parents	Foundations Gifts	Corporate Gifts	Other Organizations	Other Individuals	Total
2012	\$6,226	\$1,565	\$2,901	\$1,218	\$66	\$1,247	\$13,223
2013	\$5,977	\$1,556	\$2,600	\$1,338	\$83	\$306	\$11,861
2014	\$6,924	\$1,627	\$2,032	\$1,386	\$38	\$403	\$12,410
2015	\$6,672	\$1,717	\$2,694	\$1,506	\$72	\$398	\$13,058
2016	\$5,627	\$1,685	\$2,931	\$1,632	\$131	\$417	\$12,423
2017	\$6,426	\$1,529	\$1,817	\$1,499	\$125	\$307	\$11,703
2018	\$7,930	\$1,467	\$1,631	\$1,307	\$138	\$431	\$12,904
2019	\$6,848	\$1,396	\$922	\$939	\$1,871	\$475	\$12,451

All Outright Giving and Deferred Giving (Present Value) as reported in the VSE (in Thousands)

(VSE: Voluntary Support for Education survey)

Note: Donor advised funds were reported under Other Organizations instead of under Foundation Gifts in 2019.

Year (as of June 30)	Alumni	Parents	Foundations Gifts	Corporate Gifts	Other Organizations	Other Individuals	Total
2012	\$14,697	\$7,703	\$5,487	\$3,221	\$117	\$2,722	\$33,945
2013	\$14,258	\$3,173	\$5,628	\$3,654	\$133	\$1,045	\$27,891
2014	\$18,917	\$2,454	\$6,397	\$3,213	\$38	\$610	\$31,630
2015	\$15,850	\$2,766	\$6,667	\$2,824	\$74	\$829	\$29,010
2016	\$14,915	\$2,898	\$6,350	\$2,707	\$132	\$558	\$27,559
2017	\$34,564	\$3,015	\$5,930	\$2,258	\$127	\$906	\$46,800
2018	\$20,163	\$1,960	\$8,124	\$7,184	\$139	\$662	\$38,232
2019	\$20,367	\$2,016	\$4,239	\$1,201	\$10,392	\$1,854	\$40,069

DEFINITIONS

DEFINITIONS BUCKNELL UNIVERSITY

TERM	DEFINITION	DEFINITION SOURCE
Admissions		
First-year student	A student who has completed less than the equivalent of 1 full year of undergraduate work; that is, less than 30 semester hours (in a 120-hour degree program) or less than 900 contact hours.	IPEDS
SAT/ACT test score calculation	SAT/ACT calculation is for ALL enrolled, degree/certificate-seeking, first-time (freshman) students who submitted test scores. If students submitted both SAT and ACT scores, but only SAT scores were considered for admission, only report the SAT scores (and vice versa).	IPEDS
Revised SAT in 2017	The SAT scores for Fall 2017 represent scores from the redesigned SAT (rSAT) test. Fall semester entering students had the option to submit the historical SAT (hSAT) scores. Using the instructions provide by the Integrated Postsecondary Education Data System (IPEDS), those hSAT scores submitted were converted to the rSAT score using the College Board concordance tools and tables. The 2017 results may or may not be indicative of future year entering class SAT metrics for Bucknell's modal applicants, given the lack of data available regarding the rSAT and the combination of the hSAT and rSAT scores in this entering class.	IR Office
Transfer Student	A student entering the institution for the first time but known to have previously attended a postsecondary institution at the same level (e.g., undergraduate). The student may transfer with or without credit.	Common Data Set
Enrollment		
American Indian or Alaska Native	A person having origins in any of the original peoples of North and South America (including Central America) who maintains cultural identification through tribal affiliation or community attachment.	IPEDS
Asian	A person having origins in any of the original peoples of the Far East, Southeast Asia, or the Indian Subcontinent, including, for example, Cambodia, China, India, Japan, Korea, Malaysia, Pakistan, the Philippine Islands, Thailand and Vietnam.	IPEDS
Black or African American	A person having origins in any of the black racial groups of Africa.	IPEDS
Degree Seeking	Students enrolled in courses for credit and recognized by the institution as seeking a degree, certificate, or other formal award. High school students also enrolled in postsecondary courses for credit are not considered degree/certificate-seeking.	IPEDS
First-Generation	A student who is the first member of his or her immediate family to attend a college or university; neither of his or her biological or adoptive parents have ever attended a college or university.	IR Office
Full Time Students	Courseloads and full-time status: The normal courseload is four course credits. All degree candidates, including seniors, are expected to be enrolled each semester as full-time students, carrying a minimum of 3.0 and a maximum of 4.75 course credits, regardless of the number of course credits previously earned or planned for the future.	IPEDS

TERM	DEFINITION	DEFINITION SOURCE
Full-Time Equivalent (FTE) of Students	The full-time equivalent (FTE) of students is a single value providing a meaningful combination of full time and part time students. IPEDS data products currently have two calculations of FTE students, one using fall student headcounts and the other using 12-month instructional activity. Bucknell University is using the fall headcount calculation.	IPEDS
Hispanic	A person of Cuban, Mexican, Puerto Rican, South or Central American, or other Spanish culture or origin, regardless of race.	IPEDS
Home of Origin	Student's home of origin is Pennsylvania if he/she is U.S citizen and his/her Home State is PA ; Student's home of origin is other U.S. State if he/she is U.S. citizen and his/her Home State is other states; Student's home of origin is other country if he/she is not a U.S. citizen.	IR Office
Multi-race	A person with more than one race.	IPEDS
Native Hawaiian/ Pacific Islander	A person having origins in any of the original peoples of Hawaii, Guam, Samoa, or other Pacific Islands.	IPEDS
Nonresident Alien	A person who is not a citizen or national of the United States and who is in this country on a visa or temporary basis and does not have the right to remain indefinitely.	IPEDS
Pell Grant	A Pell Grant is money the U.S. federal government provides for students who need it to pay for college. For details, see http://www2.ed.gov/programs/fpg/index.html	U.S. Department of Education
Percent of Non-Residents	Percentage of the non-resident students out of the total students.	IR Office
Race Unknown	The category used to report students or employees whose race and ethnicity are not known.	IPEDS
Residential Colleges	The Residential Colleges are themed living-learning communities tied to a first-semester class, in which students live and learn with their peers who share similar interests, and participate in off-campus trips and weekly Common Hour discussions led by faculty mentors. Bucknell residential colleges include Arts College, Discovery College, Environmental College, Food College, Global College, Humanities College, Languages & Cultures College, Social Justice College, and Society & Technology College.	Bucknell Academics
Students of Color	This category includes Asian, Hispanic, Black, American Indian, Native Hawaiian/ Pacific Islander, and multi-race students. The percentage of students in this category is calculated by dividing the number of Students of Color by the total number of students.	IR Office
White	A person having origins in any of the original peoples of Europe, the Middle East, or North Africa.	IPEDS

TERM	DEFINITION	DEFINITION SOURCE
Academics, Co-curricular and Extracurricular Activities		
Class Size	A class section is an organized course offered for credit, identified by discipline and number, meeting at a stated time or times in a classroom or similar setting, and not a subsection such as a laboratory or discussion session. Undergraduate class sections are defined as any sections in which at least one degree-seeking undergraduate student is enrolled for credit. Exclude distance learning classes and noncredit classes and individual instruction such as dissertation or thesis research, music instruction, or one-to-one readings. Exclude students in independent study, co-operative programs, internships, foreign language taped tutor sessions, practicums, and all students in one-on-one classes. Each class section should be counted only once and should not be duplicated because of course catalog cross-listings.	Common Data Set
Greek Students	Students participate in sororities or fraternities at Bucknell. The eligible students usually include Sophomore, Junior, Senior and Students in 4th year of 5 year Engineering program. Participation rate could be calculated either from eligible students or from total student body.	IR Office
Student Success		
Cohort	A specific group of students established for tracking purposes.	IPEDS
Fall Cohort	The group of students entering in the fall term established for tracking purposes. For the Graduation Rates component, this includes all students who enter an institution as full-time, first-time degree or certificate-seeking undergraduate students during the fall term of a given year.	IPEDS
Graduation Rate	The number of students entering the institution as full-time, first-time, degree/certificate-seeking undergraduate students in a particular year (cohort), as a percent of the number completing their program within 150 percent (6-year) of normal time to completion.	IPEDS
POSSE	The Posse Foundation identifies, recruits, and trains high school students with extraordinary academic and leadership potential to become Posse Scholars. For over ten years, Posse has been on Bucknell's campus; we currently sponsor scholars from Los Angeles, Boston, and Washington D.C..	BU Website
Retention Rate	A measure of the rate at which students persist in their educational program at an institution, expressed as a percentage. For <u>four-year institutions</u> , this is the percentage of first-time bachelors (or equivalent) degree-seeking undergraduates from the previous fall who are again enrolled in the current fall. For all other institutions this is the percentage of first-time degree/certificate-seeking students from the previous fall who either re-enrolled or successfully completed their program by the current fall.	IPEDS

TERM	DEFINITION	DEFINITION SOURCE
Faculty & Staff		
Exempt Staff	Exempt staff are paid their established salary regardless of the hours actually worked to complete their job. That is, exempt employees are required to work as much time as is necessary to fulfill the requirements of the position without additional compensation, even if the work is performed beyond “normal” work hours.	Human Resources
Faculty	Persons identified by the institution as such and typically those whose initial assignments are made for the purpose of conducting instruction, research or public service as a principal activity (or activities). They may hold academic rank titles of professor, associate professor, assistant professor, instructor, lecturer or the equivalent of any of those academic ranks. Faculty may also include the chancellor/president, provost, vice provosts, deans, directors or the equivalent, as well as associate deans, assistant deans and executive officers of academic departments (chairpersons, heads or the equivalent) if their principal activity is instruction combined with research and/or public service. The designation as “faculty” is separate from the activities to which they may be currently assigned. For example, a newly appointed president of an institution may also be appointed as a faculty member. Graduate, instruction, and research assistants are not included in this category..	IPEDS
FTE Staff	Full-time-equivalent (FTE) staff is calculated by summing the total number of full-time staff and adding one-third of the total number of part-time staff. Graduate assistants are not included.	IPEDS
Full-Time staff	Full-time staff are those who are not in a temporary status and who are regularly scheduled to work Bucknell’s full-time schedule of at least 35 hours per week for at least 43 weeks (at least 1,500 hours) per calendar year. Generally, they are eligible for all University benefits, subject to the terms, conditions, and limitations of each benefit program.	Human Resources
Non-exempt Staff	Those who are entitled to minimum wage and overtime pay protections as set forth in state and federal law, including the Fair Labor Standards Act (“FLSA”). A non-exempt employee must be paid at least minimum wage and receive overtime pay at a rate of one and one-half times their regular rate of pay for any time worked beyond 40 hours in a week.	Human Resources
Other Faculty	Faculty who are not tenured or on tenure-track position but sign a long-term contract. They are counted as full-time for IPEDS reporting.	IR Office
Part-time Staff	Part-time staff are those who are not in a temporary status and who are regularly scheduled to work at least 20 hours per week and between 1,000-1,499 hours per calendar year. Regular part-time employees are eligible for University benefits, subject to the terms, conditions and limitations of each benefit program, with the exception that regular part-time employees are not eligible for dependent tuition and long-term disability, health insurance is available for the employee only (the employee may purchase dependent coverage at an additional cost).	Human Resources
Replacement Faculty	Replacement faculty replace faculty on sabbatical leave or leave with pay.	IR Office
Terminal Degree	The highest earned degree in a discipline. In most cases, this is the doctorate (Ed.D., Ph.D., Doctor of Musical Arts, and Doctor of Jurisprudence). In the fine arts, the M.F.A. or Master’s of Fine Arts degree is considered the highest appropriate degree.	IR Office
Visiting Faculty	Faculty in a temporary position of one year or less without tenure consideration. Appointees to two- or three-year positions are not required to use the “visiting” designation although they may use it if they wish”. Visiting faculty employees are counted as full-time for IPEDS reporting.	IR Office

TERM	DEFINITION	DEFINITION SOURCE
Finance		
All Outright Giving	All annual giving including deferred giving and giving for capital purposes.	VSE Survey
Comprehensive Fee	A single fixed amount of money charged by an institution that covers tuition, required fees, room, and board. For some institutions, this amount may also cover books and supplies of money charged by an institution that covers tuition, required fees, room, and board. For some institutions, this amount may also cover books and supplies.	IPEDS
Endowment Funds	Funds whose principal is nonexpendable (true endowment) and that are intended to be invested to provide earnings for institutional use. Also includes term endowments and funds functioning as endowment.	IPEDS
Financial Aid	Federal Work Study, grants, loans to students (government and/or private), assistantships, scholarships, fellowships, tuition waivers, tuition discounts, employer aid (tuition reimbursement) and other monies (other than from relatives/friends) provided to students to meet expenses. This excludes loans to parents.	IPEDS
Outright Giving	Funds given for current operations.	VSE Survey
Tuition	The amount of money charged to students for instructional services. Tuition may be charged per term, per course, or per credit.	IPEDS
Tuition Discount Rate	Total financial aid awarded (does not include student loans nor student specific grant awards as determined by a government agency or third party) divided by total gross tuition and fees.	IR Office
VSE	Voluntary Support of Education	VSE Survey
Bucknell Academic Colleges and Schools		
College of Arts & Sciences	Provides 46 majors. Courses are offered in the three traditional liberal arts divisions: humanities, social sciences, and natural sciences and mathematics.	Bucknell Academics
College of Engineering	Accredited by the Accreditation Board for Engineering and Technology, Inc (ABET), the College of Engineering offers 8 Bachelor of Science Degrees: Biomedical Engineering, Chemical Engineering; Civil Engineering, Environmental Engineering; Computer Engineering; Computer Science and Engineering; Electrical Engineering; Mechanical Engineering.	Bucknell Academics
Freeman College of Management	Accredited by the Association to Advance Collegiate Schools of Business (AACSB), the Freeman College of Management offers six majors leading to the bachelor of business Administration Degree: Accounting; Business Analytics; Finance; Global Management; Managing for Sustainability; Markets, Innovation & Design.	Bucknell Academics
Graduate Studies	The College of Arts & Sciences graduate program leads to three degrees of Master of Arts (MART), Master of Science (MSCI), and Master in Education. The College of Engineering Graduate Program leads to five degrees of Master of Science in Chemical Engineering, Civil Engineering, Electrical Engineering, Environmental Engineering and Mechanical Engineering.	Bucknell Academics



Bucknell
UNIVERSITY
LEWISBURG, PA 17837